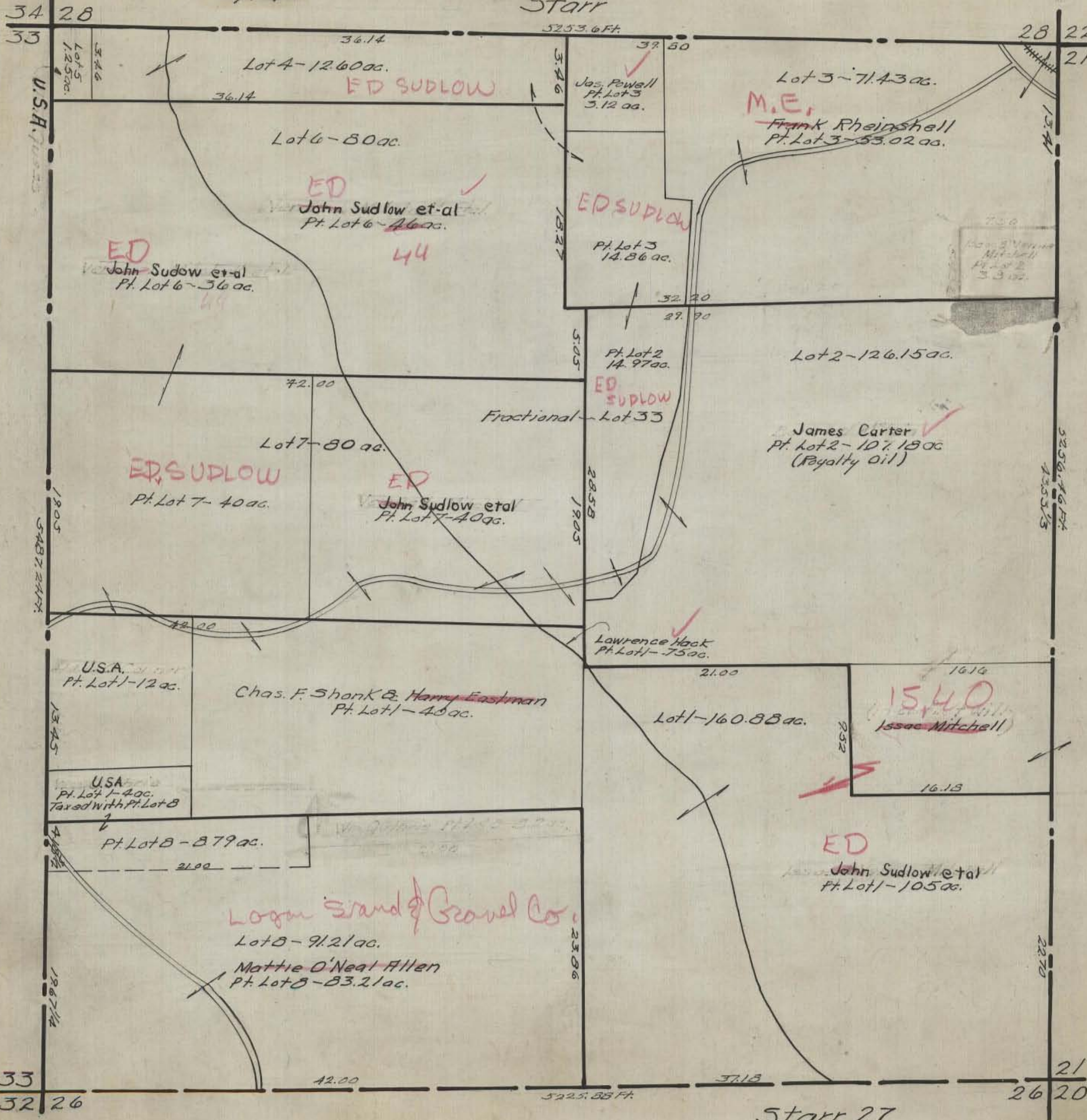


HOCKING COUNTY STATE OHIO  
SECTION 27 TWP. 12 RANGE 16

Orig. 1943

Starr



Logan Sand & Gravel Co.

Mattie O'Neal Allen  
Pt. Lot 8 - 83.21 ac.

ED  
John Sudlow et al  
Pt. Lot 1 - 105 ac.

15,400  
Issac Mitchell

James Carter  
Pt. Lot 2 - 107.18 ac  
(Royalty Oil)

Lawrence Hack  
Pt. Lot 1 - 75 ac.

Pt. Lot 2  
14.97 ac.

Pt. Lot 3  
14.86 ac.

Jas. Powell  
Pt. Lot 3  
5.12 ac.

Chas. F. Shank & Harry Eastman  
Pt. Lot 1 - 40 ac.

ED, SUDLOW  
Pt. Lot 7 - 40 ac.

ED  
John Sudlow et al  
Pt. Lot 7 - 40 ac.

Lot 7 - 80 ac.

Lot 6 - 80 ac.

ED  
John Sudlow et al  
Pt. Lot 6 - 46 ac.

ED  
John Sudow et al  
Pt. Lot 6 - 36 ac.

Lot 4 - 12.60 ac.

Lot 3 - 71.43 ac.

M.E.  
Frank Rheinshell  
Pt. Lot 3 - 53.02 ac.

Lot 2 - 126.15 ac.

Fractional Lot 33

U.S.A.  
Pt. Lot 1 - 12 ac.

USA  
Pt. Lot 1 - 4 ac.  
Taxed with Pt. Lot 8

Pt. Lot 8 - 879 ac.

Mattie O'Neal Allen  
Pt. Lot 8 - 83.21 ac.

Starr 27

26 20

33 32 26