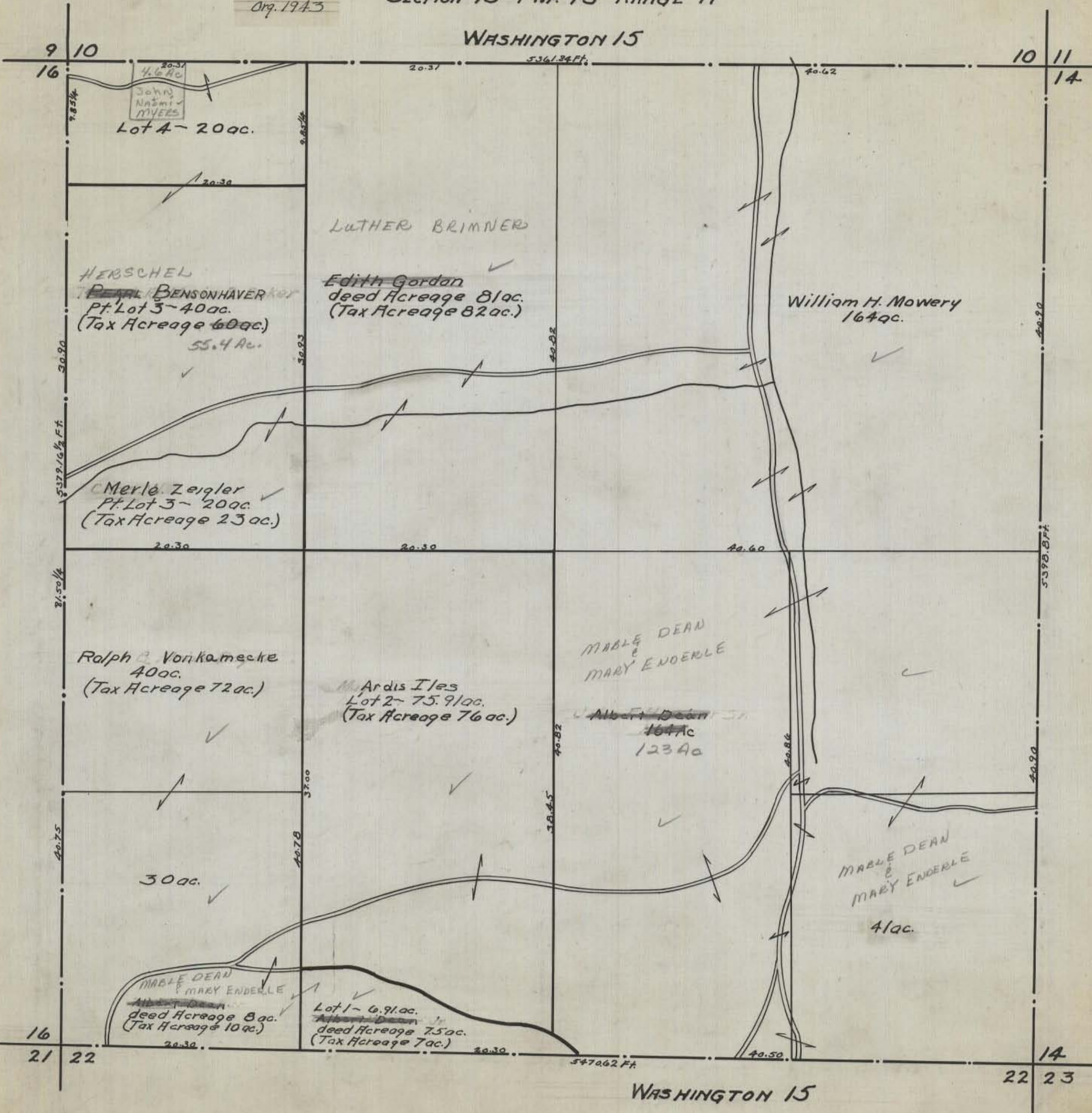


HOCKING COUNTY STATE OHIO  
SECTION 15 TWP 13 RANGE 17

Orig. 1943

WASHINGTON 15



20.37  
4.6 Ac  
John Nasmir MYERS  
Lot 4 - 20 ac.

LUTHER BRIMNER

HERSCHEL  
PEARL BENSON HAVER  
Pt. Lot 3 - 40 ac.  
(Tax Acreage 60 ac.)  
55.4 Ac.

Edith Gordon  
deed Acreage 81 ac.  
(Tax Acreage 82 ac.)

William H. Mowery  
164 ac.

Merle Zeigler  
Pt. Lot 3 - 20 ac.  
(Tax Acreage 23 ac.)

Ralph Vonkamescke  
40 ac.  
(Tax Acreage 72 ac.)

M. Ardis Iles  
Lot 2 - 75.9 ac.  
(Tax Acreage 76 ac.)

MABLE DEAN  
&  
MARY ENDERLE

Albert Dean  
164 ac  
123 ac

30 ac.

MABLE DEAN  
&  
MARY ENDERLE  
41 ac.

MABLE DEAN  
&  
MARY ENDERLE  
deed Acreage 8 ac.  
(Tax Acreage 10 ac.)

Lot 1 - 6.91 ac.  
deed Acreage 7.5 ac.  
(Tax Acreage 7 ac.)

WASHINGTON 15