

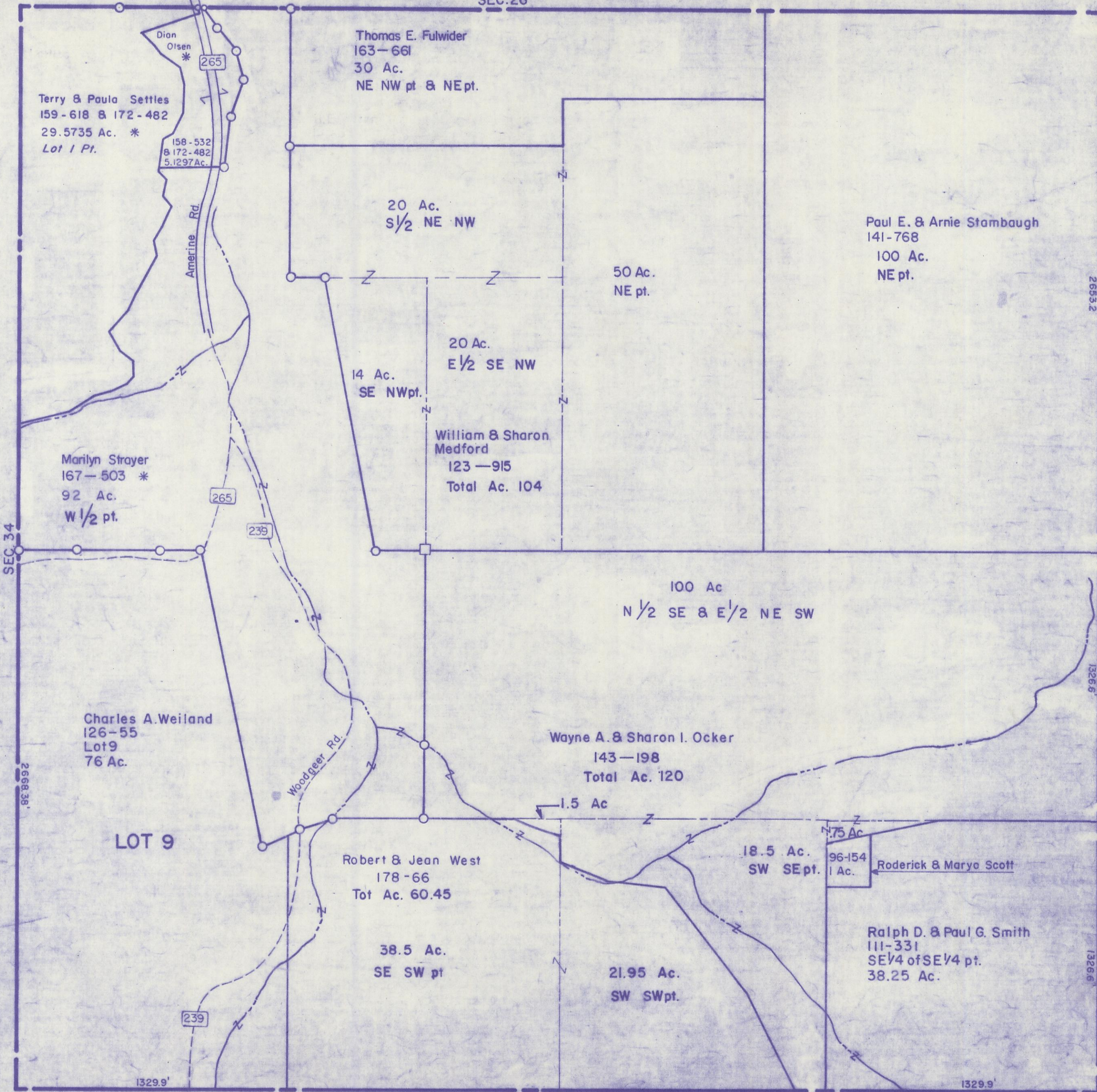
HOCKING COUNTY

Sec. 35 T11 R18

BENTON TWP.

Scale: 1"=400'

SEC. 26



Terry & Paula Settles
159-618 & 172-482
29.5735 Ac. *
Lot 1 Pt.

158-532
& 172-482
5.1297 Ac.

Thomas E. Fulwider
163-661
30 Ac.
NE NW pt & NE pt.

20 Ac.
S 1/2 NE NW

50 Ac.
NE pt.

Paul E. & Arnie Stambaugh
141-768
100 Ac.
NE pt.

14 Ac.
SE NW pt.

20 Ac.
E 1/2 SE NW

William & Sharon
Medford
123-915
Total Ac. 104

Marilyn Strayer
167-503 *
92 Ac.
W 1/2 pt.

100 Ac
N 1/2 SE & E 1/2 NE SW

Charles A. Weiland
126-55
Lot 9
76 Ac.

Wayne A. & Sharon I. Ocker
143-198
Total Ac. 120

LOT 9

Robert & Jean West
178-66
Tot Ac. 60.45

1.5 Ac

18.5 Ac.
SW SE pt.

7.75 Ac.
96-154
1 Ac.

Roderick & Maryo Scott

38.5 Ac.
SE SW pt

21.95 Ac.
SW SW pt.

Ralph D. & Paul G. Smith
111-331
SE 1/4 of SE 1/4 pt.
38.25 Ac.

VINTON CO.

SEC. 35