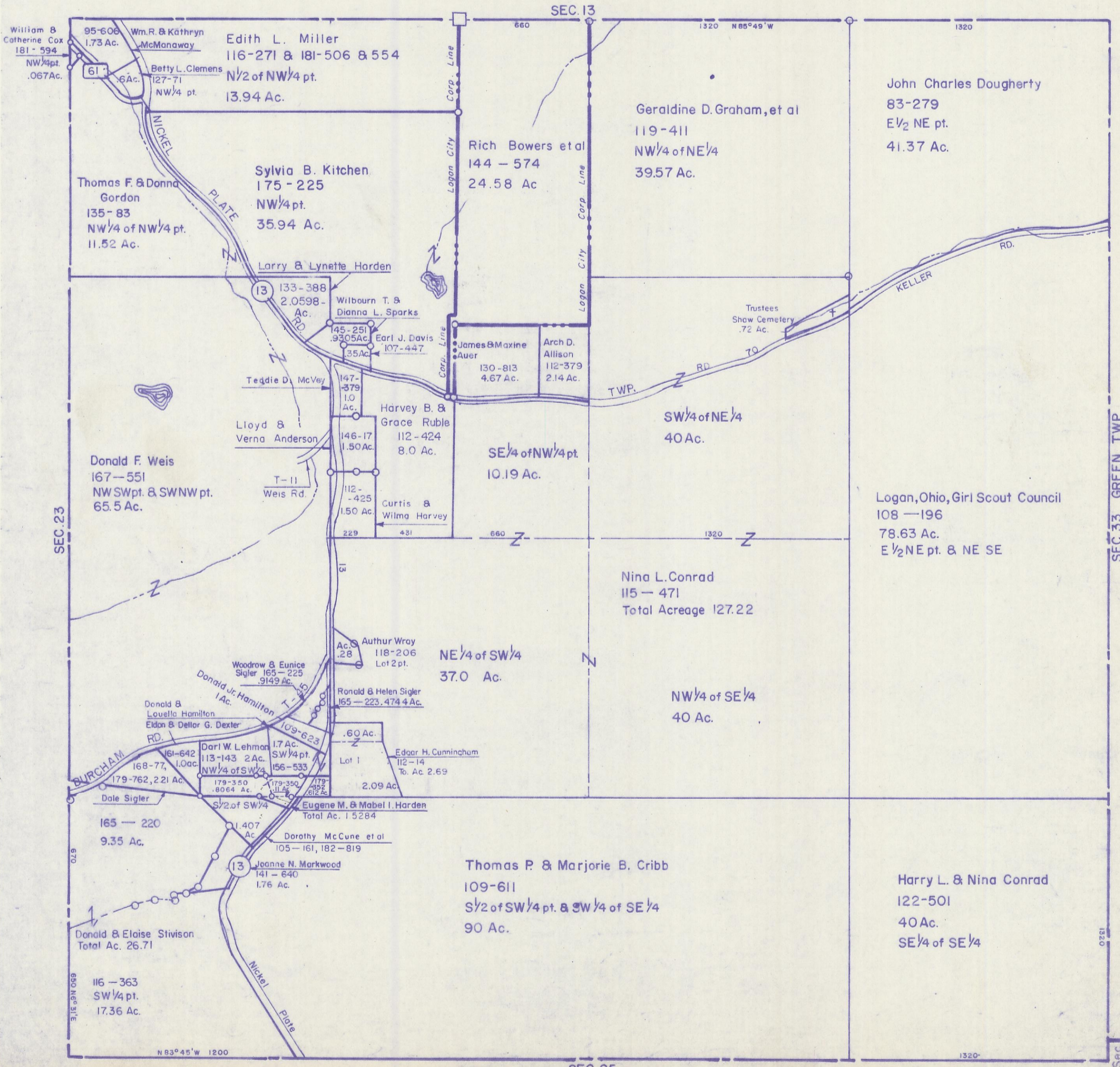


HOCKING COUNTY

Sec. 24 T.14 R.17

FALLS TWP.

Scale- 1"=400'



William B Catherine Cox  
181-594  
NW 1/4 pt.  
.067 Ac.

95-606  
1.73 Ac.  
61  
.6 Ac.

Wm. R. & Kathryn  
McManaway  
Betty L. Clemens  
127-71  
NW 1/4 pt.

Edith L. Miller  
116-271 & 181-506 & 554  
N 1/2 of NW 1/4 pt.  
13.94 Ac.

Thomas F. & Donna  
Gordon  
135-83  
NW 1/4 of NW 1/4 pt.  
11.52 Ac.

Sylvia B. Kitchen  
175-225  
NW 1/4 pt.  
35.94 Ac.

Larry & Lynette Harden

133-388  
2.0598  
Ac.

Wilbourn T. &  
Dianna L. Sparks  
145-251  
9305 Ac.

Earl J. Davis  
107-447  
1.35 Ac.

Teddie D. McVey  
147-379  
1.0 Ac.

Lloyd &  
Verna Anderson  
146-17  
1.50 Ac.

Harvey B. &  
Grace Ruble  
112-424  
8.0 Ac.

Donald F. Weis  
167-551  
NW SW pt. & SWNW pt.  
65.5 Ac.

T-11  
Weis Rd.

112-425  
1.50 Ac.

Curtis &  
Wilma Harvey  
229 431

SE 1/4 of NW 1/4 pt.  
10.19 Ac.

SW 1/4 of NE 1/4  
40 Ac.

Nina L. Conrad  
115-471  
Total Acreage 127.22

NE 1/4 of SW 1/4  
37.0 Ac.

NW 1/4 of SE 1/4  
40 Ac.

BURCHAM  
RD.  
161-642  
1.0 Ac.

Donald &  
Louella Hamilton  
Eldon & Dellar G. Dexter

Donald Jr. Hamilton  
1 Ac.

Woodrow & Eunice  
Sigler 165-225  
9149 Ac.

Ronald & Helen Sigler  
165-223, 474 4 Ac.

Darl W. Lehman  
113-143 2 Ac.  
156-533  
NW 1/4 of SW 1/4

Lot 1  
.60 Ac.

Edgar H. Cunningham  
112-14  
76 Ac. 2.69

179-762, 2.21 Ac.  
Dale Sigler

179-350  
.8064 Ac.

179-350  
.812 Ac.

Eugene M. & Mabel I. Harden  
Total Ac. 15284

165-220  
9.35 Ac.

1407  
Ac.

Dorothy McCune et al  
105-161, 182-819

Thomas P. & Marjorie B. Cribb  
109-611  
S 1/2 of SW 1/4 pt. & SW 1/4 of SE 1/4  
90 Ac.

Donald & Eloise Stivison  
Total Ac. 26.71

116-363  
SW 1/4 pt.  
17.36 Ac.

Joanne N. Markwood  
141-640  
1.76 Ac.

John Charles Dougherty  
83-279  
E 1/2 NE pt.  
41.37 Ac.

Geraldine D. Graham, et al  
119-411  
NW 1/4 of NE 1/4  
39.57 Ac.

Rich Bowers et al  
144-574  
24.58 Ac

Trustees  
Shaw Cemetery  
.72 Ac.

James & Maxine  
Auer  
130-813  
4.67 Ac.

Arch D.  
Allison  
112-379  
2.14 Ac.

Logan, Ohio, Girl Scout Council  
108-196  
78.63 Ac.  
E 1/2 NE pt. & NE SE

SEC. 33 GREEN TWP.

Sec 32

SEC. 24

SEC. 25

N 83° 45' W 1200

1320

1320

SEC. 23

SEC. 13