

HOCKING COUNTY

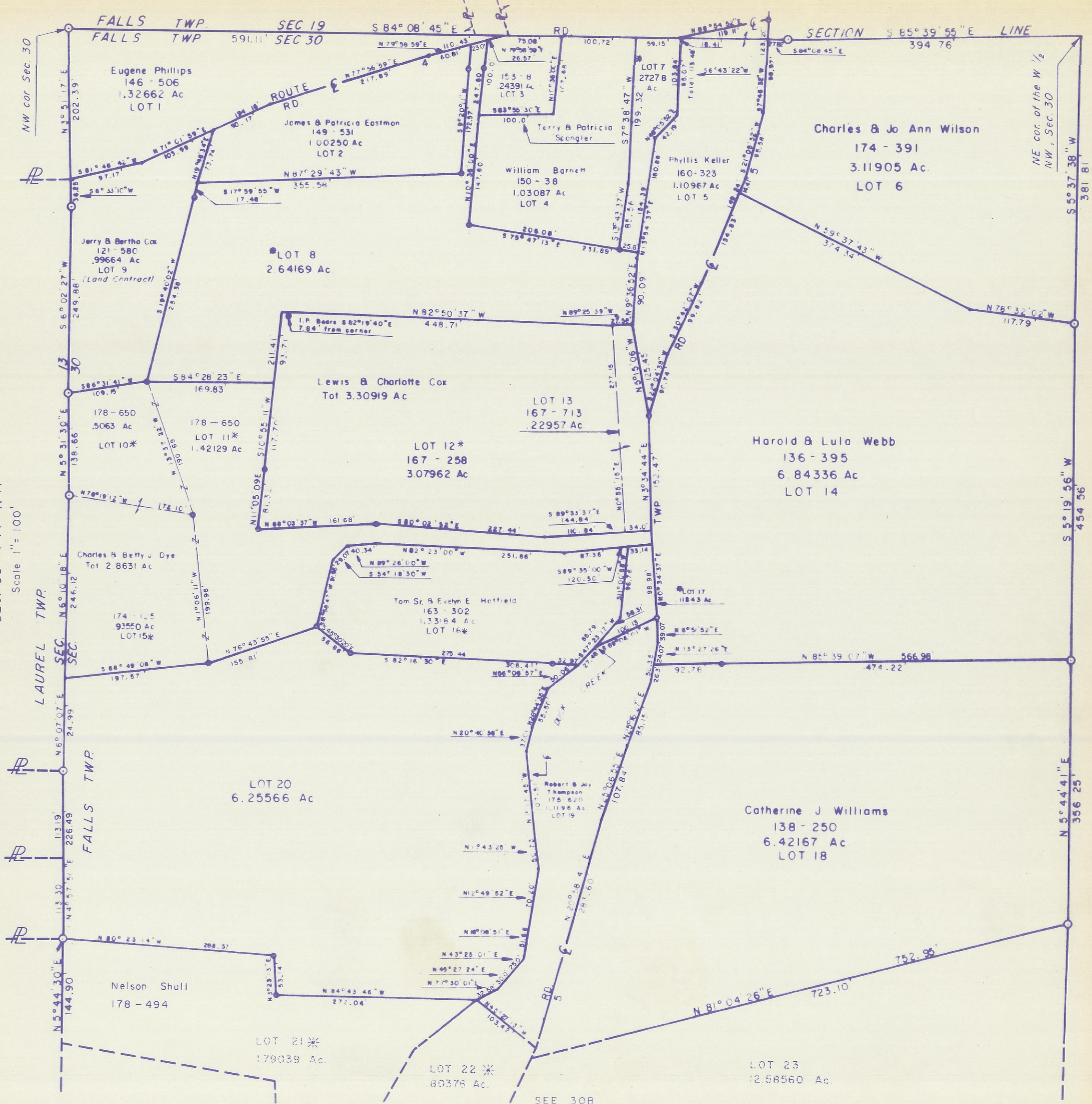
FALLS TWP.

SEC. 30 T 14 R 17

Scale 1" = 100'

NOTE: All lots owned by Roy Shull, (117-149), unless otherwise noted. * These Lots cannot be sold separately. See Recorded plat.

30 A



SHULL SUBDIV.



1" = 100'
NORTH