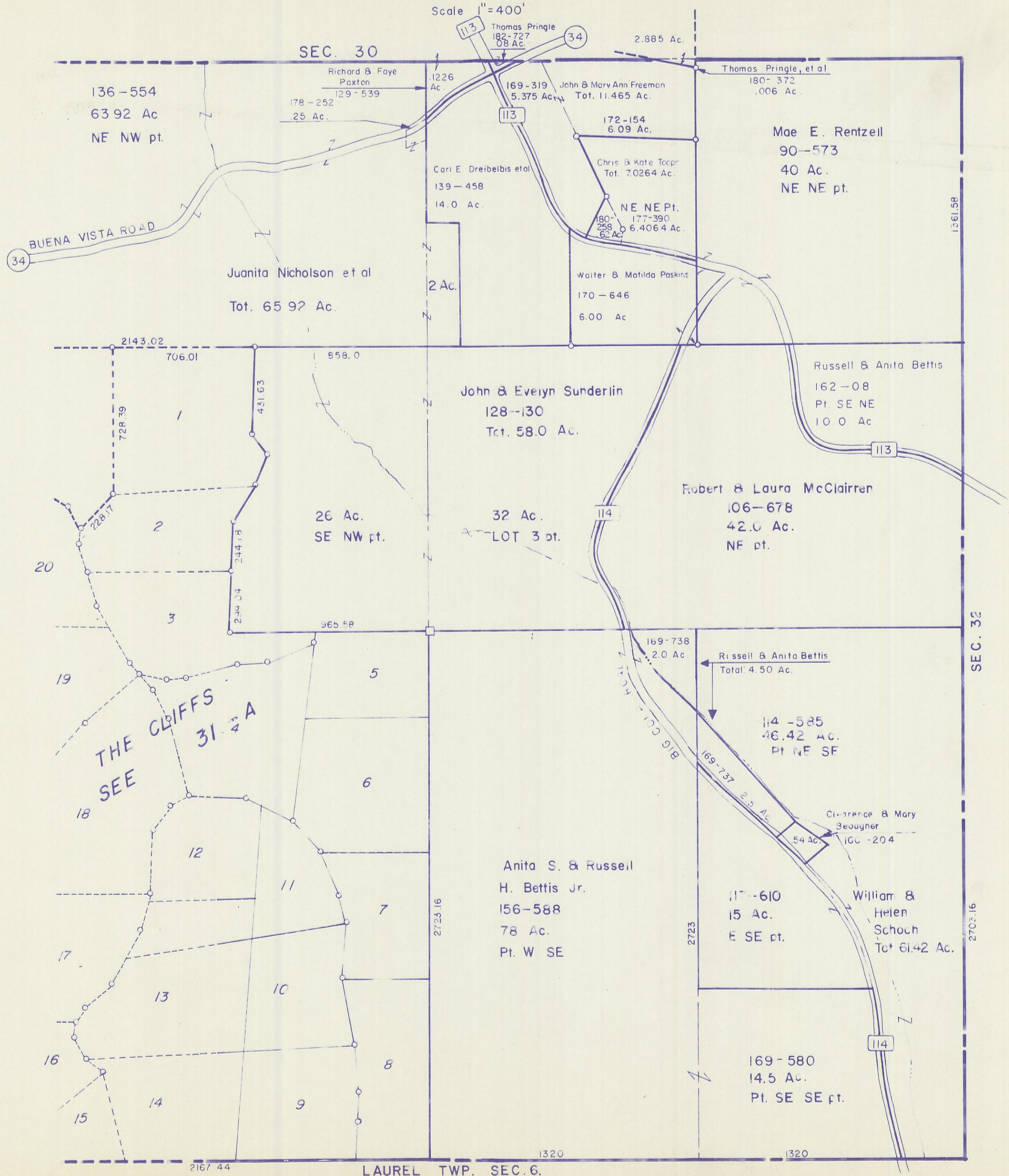


HOCKING COUNTY

GOOD HOPE

SEC. 31 pt. T 13 R 18

Scale 1" = 400'



136-554
63.92 Ac
NE NW pt.

SEC. 30

Richard & Faye Paxton
129-539
.25 Ac.

Thomas Pringle
182-727
.08 Ac.

169-319
5.375 Ac.

John & Mary Ann Freeman
Tot. 11.465 Ac.

Thomas Pringle, et al
180-372
.006 Ac.

172-154
6.09 Ac.

Mae E. Rentzell
90-573
40 Ac.
NE NE pt.

Carl E. Dreibelbis et al
139-458
14.0 Ac.

Chris & Kate Cooper
Tot. 7.0264 Ac.

NE NE Pt.
180-258
177-390
6.4064 Ac.

BUENA VISTA ROAD

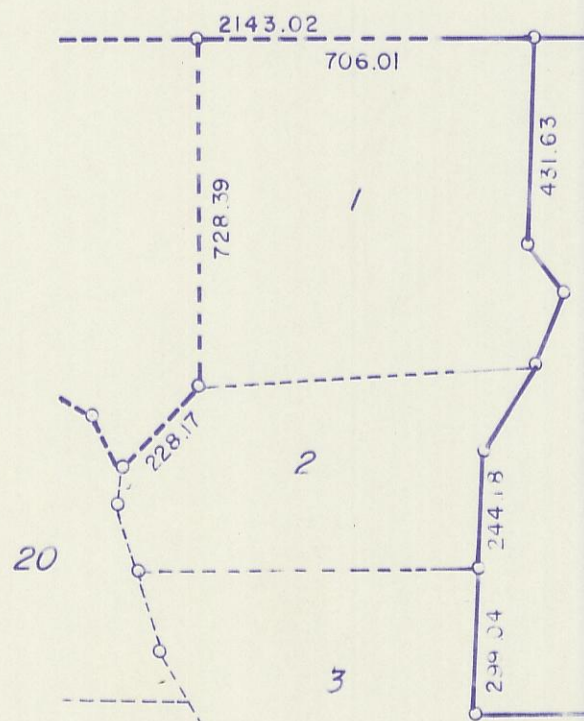
Juanita Nicholson et al
Tot. 65.92 Ac.

Walter & Matilda Paskins
170-646
6.00 Ac.

2143.02
706.01
858.0

John & Evelyn Sunderlin
128-130
Tot. 58.0 Ac.

Russell & Anita Bettis
162-08
Pt. SE NE
10.0 Ac.



26 Ac.
SE NW pt.

32 Ac.
LOT 3 pt.

Robert & Laura McClairren
106-678
42.0 Ac.
NE pt.

2143.02
706.01
858.0

169-738
2.0 Ac.

Russell & Anita Bettis
Total: 4.50 Ac.

114-585
46.42 Ac.
Pt NE SE

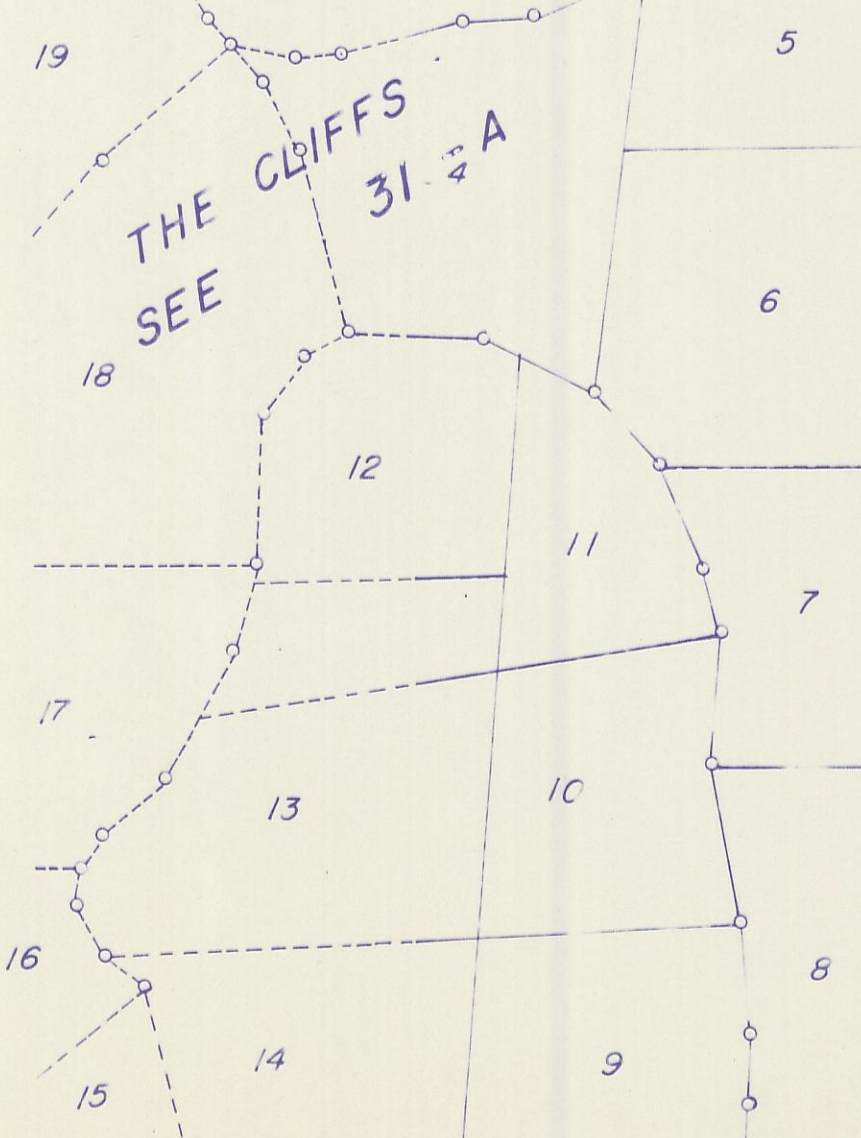
THE CLIFFS
SEE 31 1/2 A

Anita S. & Russell
H. Bettis Jr.
156-588
78 Ac.
Pt. W SE

Clarence & Mary
Beougher
100-204
54 Ac.

117-610
15 Ac.
E SE pt.

William & Helen
Schoch
Tot 61.42 Ac.



169-580
14.5 Ac.
Pt. SE SE pt.

2167.44

LAUREL TWP. SEC. 6.

SEC. 31 pt.