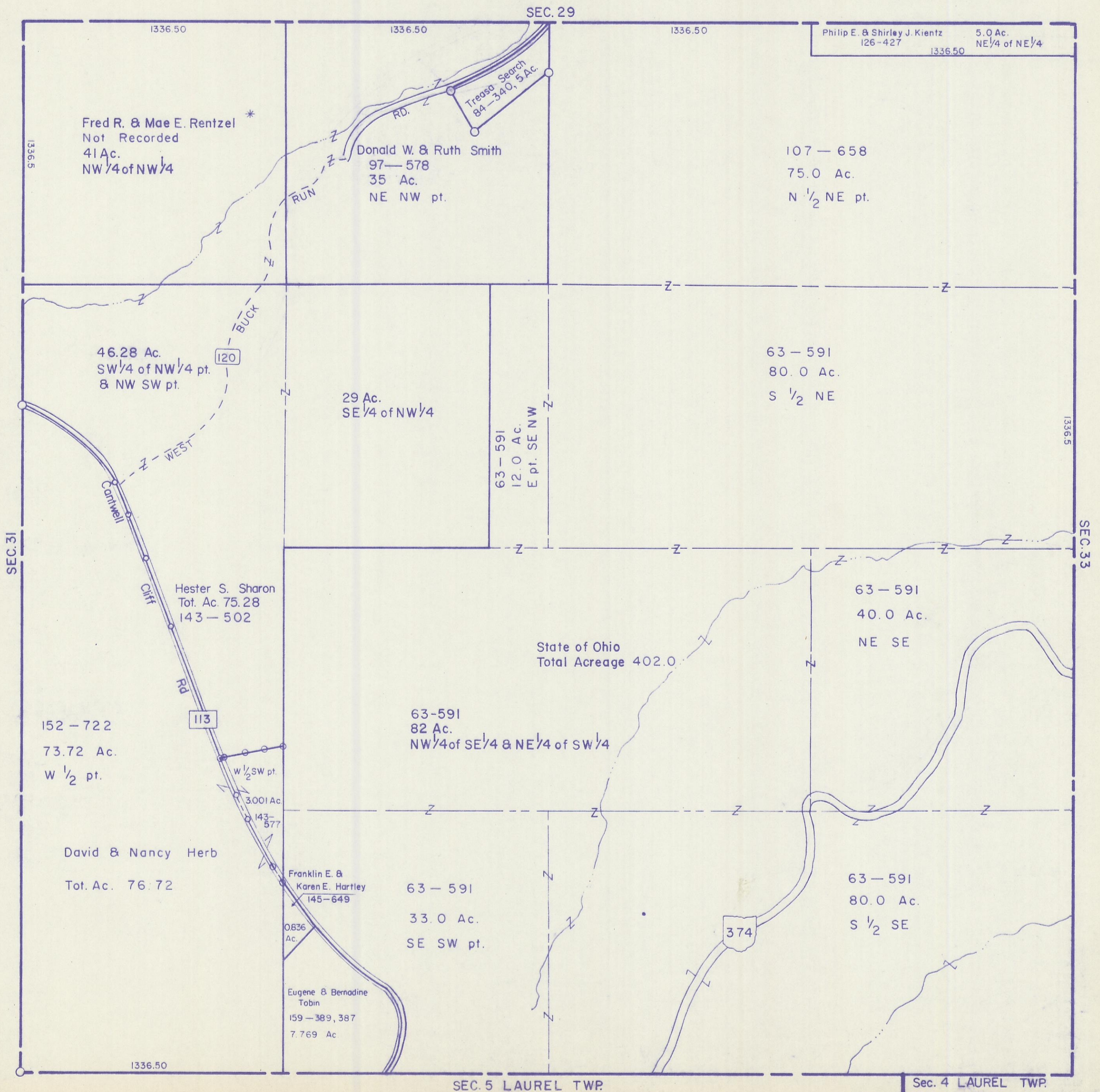


HOCKING COUNTY

Sec. 32 T 13 R 18

GOOD HOPE TWP.

Scale: 1" = 400'



Philip E. & Shirley J. Kientz
126-427
5.0 Ac.
NE 1/4 of NE 1/4
1336.50

Fred R. & Mae E. Rentzel *
Not Recorded
41 Ac.
NW 1/4 of NW 1/4

Donald W. & Ruth Smith
97-578
35 Ac.
NE NW pt.

107-658
75.0 Ac.
N 1/2 NE pt.

46.28 Ac.
SW 1/4 of NW 1/4 pt.
& NW SW pt.

29 Ac.
SE 1/4 of NW 1/4

63-591
80.0 Ac.
S 1/2 NE

63-591
12.0 Ac.
E pt. SE NW

Hester S. Sharon
Tot. Ac. 75.28
143-502

State of Ohio
Total Acreage 402.0

63-591
40.0 Ac.
NE SE

152-722
73.72 Ac.
W 1/2 pt.

63-591
82 Ac.
NW 1/4 of SE 1/4 & NE 1/4 of SW 1/4

David & Nancy Herb
Tot. Ac. 76.72

63-591
33.0 Ac.
SE SW pt.

63-591
80.0 Ac.
S 1/2 SE

Franklin E. & Karen E. Hartley
145-649

Eugene & Bernadine Tobin
159-389, 387
7.769 Ac.

SEC. 32

SEC. 5 LAUREL TWP.

Sec. 4 LAUREL TWP.