

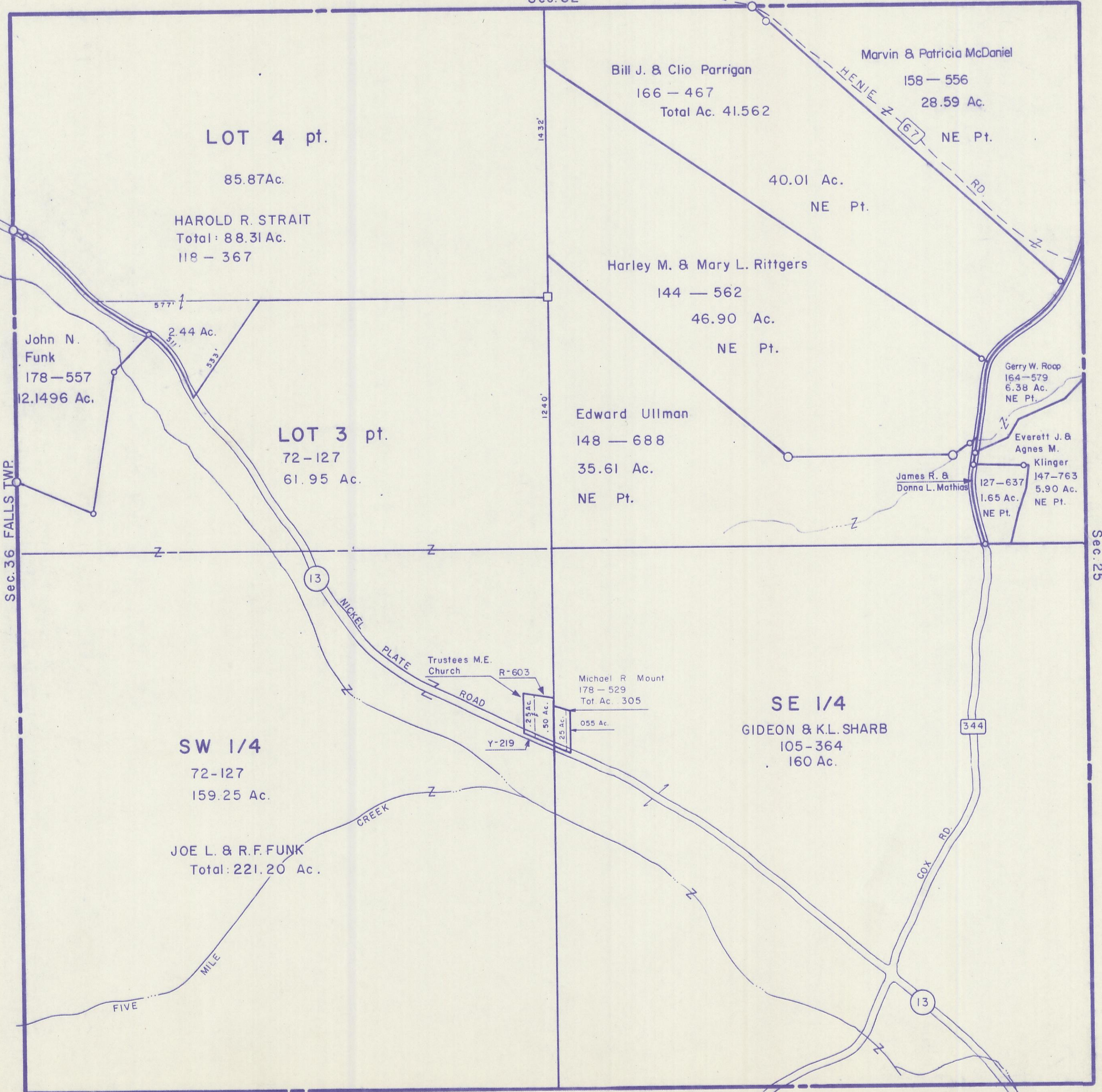
HOCKING COUNTY

Sec. 31 T13 R16

GREEN TWP

Scale 1"=400'

Sec. 32



LOT 4 pt.

85.87Ac.

HAROLD R. STRAIT
Total: 88.31 Ac.
118 - 367

John N. Funk
178-557
12.1496 Ac.

577'
2.44 Ac.
533'

LOT 3 pt.

72-127
61.95 Ac.

Bill J. & Clio Parrigan
166 - 467
Total Ac. 41.562

Marvin & Patricia McDaniel

158 - 556
28.59 Ac.

40.01 Ac.
NE Pt.

Harley M. & Mary L. Rittgers

144 - 562
46.90 Ac.
NE Pt.

Edward Ullman

148 - 688
35.61 Ac.
NE Pt.

Gerry W. Roop
164-579
6.38 Ac.
NE Pt.

Everett J. & Agnes M. Klinger
147-763
5.90 Ac.
NE Pt.

James R. & Donna L. Mathias
127-637
1.65 Ac.
NE Pt.

SE 1/4

GIDEON & K.L. SHARB
105-364
160 Ac.

SW 1/4

72-127
159.25 Ac.

JOE L. & R.F. FUNK
Total: 221.20 Ac.

Michael R. Mount
178 - 529
Tot. Ac. 305

Trustees M.E. Church
R-603
ROAD

1.25 AC.
.50 AC.
25 AC.
Y-219

Sec. 36 FALLS TWP.

Sec. 25

Sec. 36 STARR TWP.

SEC. 31