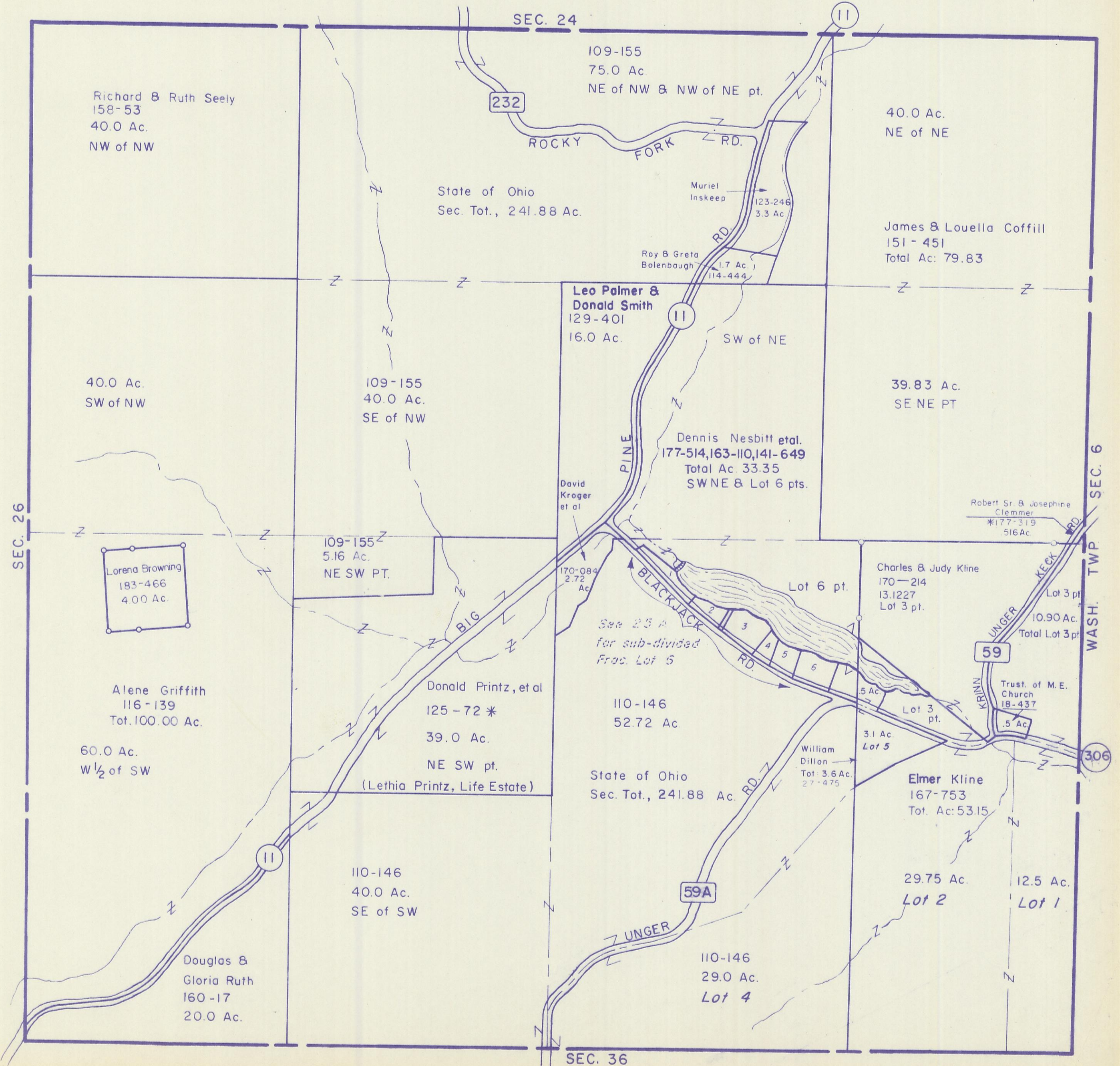


HOCKING COUNTY

LAUREL TWP.

SEC. 25 T 12 R 18

Scale 1"=400'



Richard & Ruth Seely  
158-53  
40.0 Ac.  
NW of NW

SEC. 24

109-155  
75.0 Ac.  
NE of NW & NW of NE pt.

11

40.0 Ac.  
NE of NE

State of Ohio  
Sec. Tot., 241.88 Ac.

232

ROCKY FORK RD.

Muriel Inskeep  
123-246  
3.3 Ac.

James & Louella Coffill  
151-451  
Total Ac: 79.83

Roy & Greta Bolenbaugh  
1.7 Ac.  
114-444

Leo Palmer &  
Donald Smith  
129-401  
16.0 Ac.  
SW of NE

11

40.0 Ac.  
SW of NW

109-155  
40.0 Ac.  
SE of NW

39.83 Ac.  
SE NE PT

Dennis Nesbitt et al.  
177-514, 163-110, 141-649  
Total Ac. 33.35  
SWNE & Lot 6 pts.

David Kroger et al

170-084  
2.72 Ac.

Robert Sr. & Josephine Clemmer  
\*177-319  
516 Ac.

SEC. 26

Lorena Browning  
183-466  
4.00 Ac.

109-155  
5.16 Ac.  
NE SW PT.

Charles & Judy Kline  
170-214  
13.1227  
Lot 3 pt.

Lot 3 pt.

10.90 Ac.  
Total Lot 3 pt.

BIG

See 25 A  
for sub-divided  
Frac. Lot 5

BLACKJACK RD.

Lot 6 pt.

Robert Sr. & Josephine Clemmer  
\*177-319  
516 Ac.

Alene Griffith  
116-139  
Tot. 100.00 Ac.

Donald Printz, et al  
125-72 \*  
39.0 Ac.  
NE SW pt.  
(Lethia Printz, Life Estate)

110-146  
52.72 Ac.

Lot 3 pt.

Trust of M.E. Church  
18-437  
5 Ac.

60.0 Ac.  
W 1/2 of SW

State of Ohio  
Sec. Tot., 241.88 Ac.

William Dillon  
Tot: 3.6 Ac.  
27-475

Elmer Kline  
167-753  
Tot. Ac: 53.15

110-146  
40.0 Ac.  
SE of SW

59A

UNGER RD.

29.75 Ac.  
Lot 2

12.5 Ac.  
Lot 1

Douglas &  
Gloria Ruth  
160-17  
20.0 Ac.

110-146  
29.0 Ac.  
Lot 4

3.1 Ac.  
Lot 5

Trust of M.E. Church  
18-437  
5 Ac.

SEC. 36

WASH. TWP. SEC. 6

306

SEC. 25