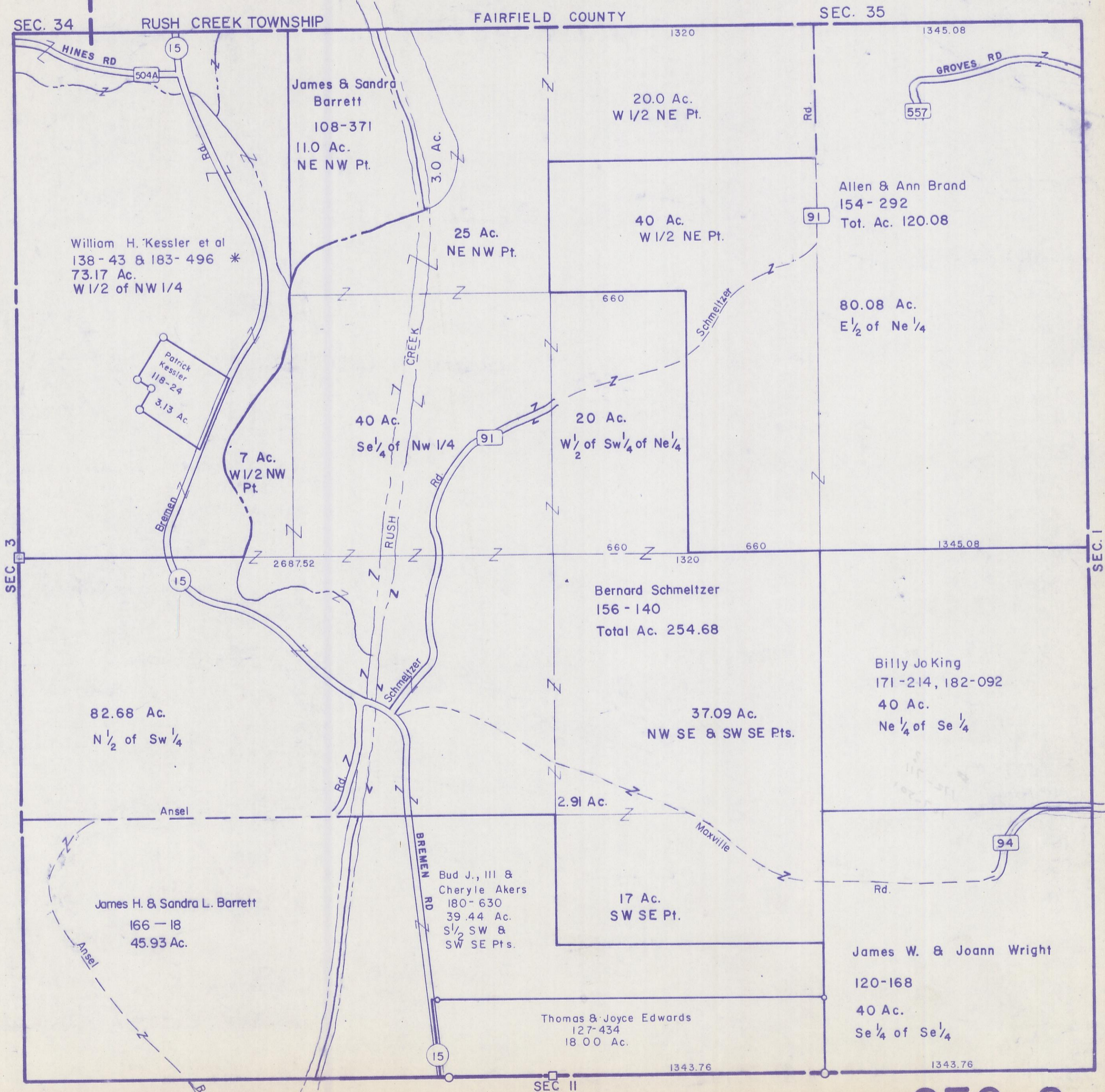


HOCKING COUNTY

SEC. 2 T.15 R.17

MARION TWP.

Scale 1" = 400'



SEC. 34

RUSH CREEK TOWNSHIP

FAIRFIELD COUNTY

SEC. 35

SEC. 3

SEC. 1

HINES RD
504A
15
James & Sandra Barrett
108-371
11.0 Ac.
NE NW Pt.
3.0 Ac.
20.0 Ac.
W 1/2 NE Pt.
40 Ac.
W 1/2 NE Pt.
91
Allen & Ann Brand
154-292
Tot. Ac. 120.08
80.08 Ac.
E 1/2 of Ne 1/4
73.17 Ac.
W 1/2 of NW 1/4
Patrick Kessler
118-24
3.13 Ac.
7 Ac.
W 1/2 NW Pt.
40 Ac.
Se 1/4 of Nw 1/4
91
20 Ac.
W 1/2 of Sw 1/4 of Ne 1/4
660
660
660
1345.08
Bernard Schmelzter
156-140
Total Ac. 254.68
37.09 Ac.
NW SE & SW SE Pts.
82.68 Ac.
N 1/2 of Sw 1/4
Ansel
2.91 Ac.
Maxville
17 Ac.
SW SE Pt.
94
James H. & Sandra L. Barrett
166-18
45.93 Ac.
Bud J., III & Cheryle Akers
180-630
39.44 Ac.
S 1/2 SW & SW SE Pts.
Thomas & Joyce Edwards
127-434
18 00 Ac.
James W. & Joann Wright
120-168
40 Ac.
Se 1/4 of Se 1/4
1343.76
1343.76

SEC 2