

HOCKING COUNTY

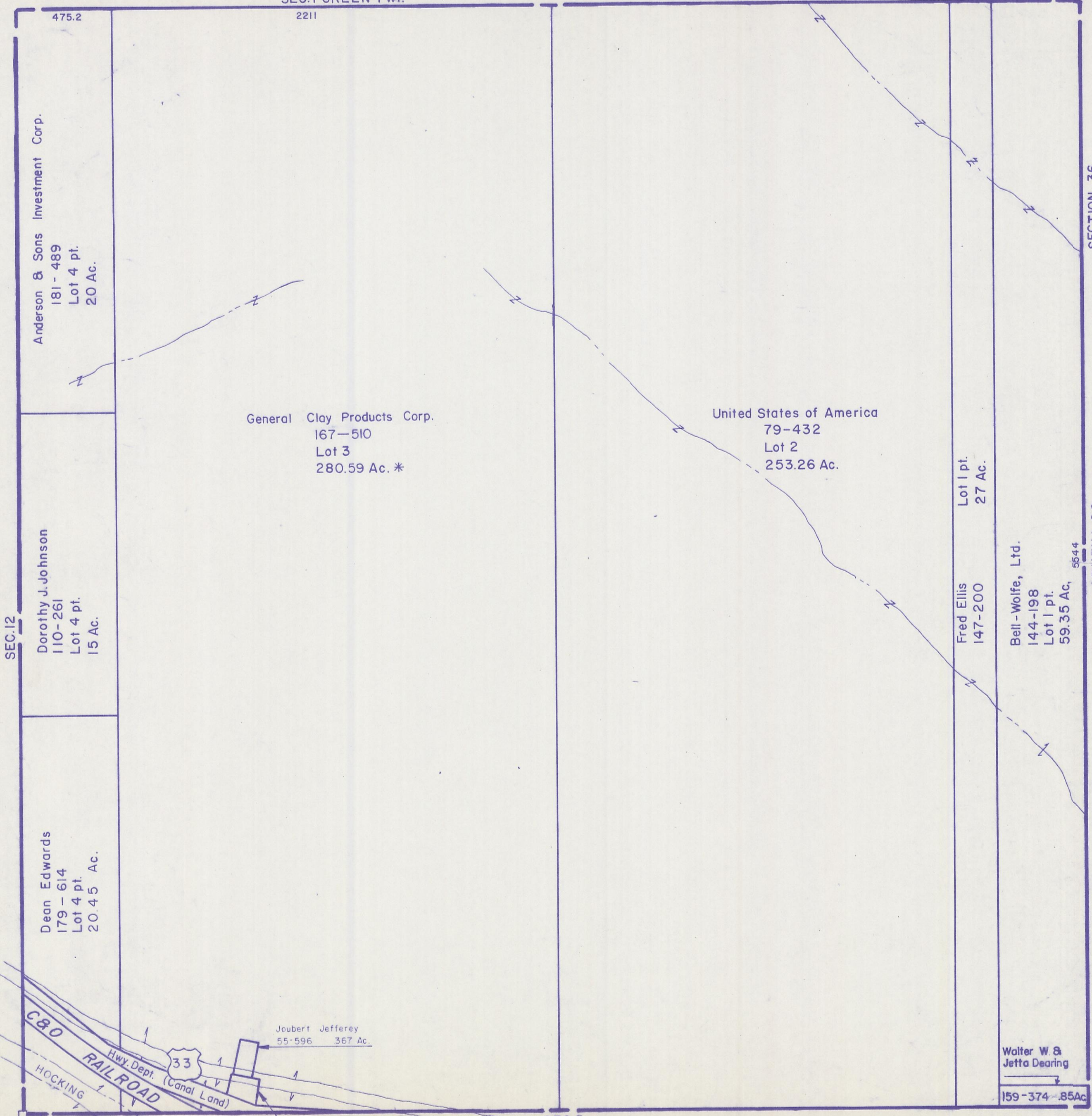
Sec. 6 T 12 R 16

STARR TWP.

Scale: 1" = 400'

SEC. 1 GREEN TWP

SEC. 1 GREEN TWP



Anderson & Sons Investment Corp.
181 - 489
Lot 4 pt.
20 Ac.

Dorothy J. Johnson
110 - 261
Lot 4 pt.
15 Ac.

Dean Edwards
179 - 614
Lot 4 pt.
20.45 Ac.

General Clay Products Corp.
167 - 510
Lot 3
280.59 Ac. *

United States of America
79 - 432
Lot 2
253.26 Ac.

Fred Ellis
147 - 200
Lot 1 pt.
27 Ac.

Bell - Wolfe, Ltd.
144 - 198
Lot 1 pt.
59.35 Ac.

Walter W & Jetta Dearing
159 - 374 .85Ac

Joubert Jefferey
55 - 596 367 Ac.

Sidney & Madeline Kopple
87 - 612 .333 Ac. *

John & Marion Tansky
147 - 381
4.00 Ac.

SEC. 12

475.2

2211

SEC. 5

SEC. 6

SECTION 36

ATHENS CO.

YORK TOWNSHIP