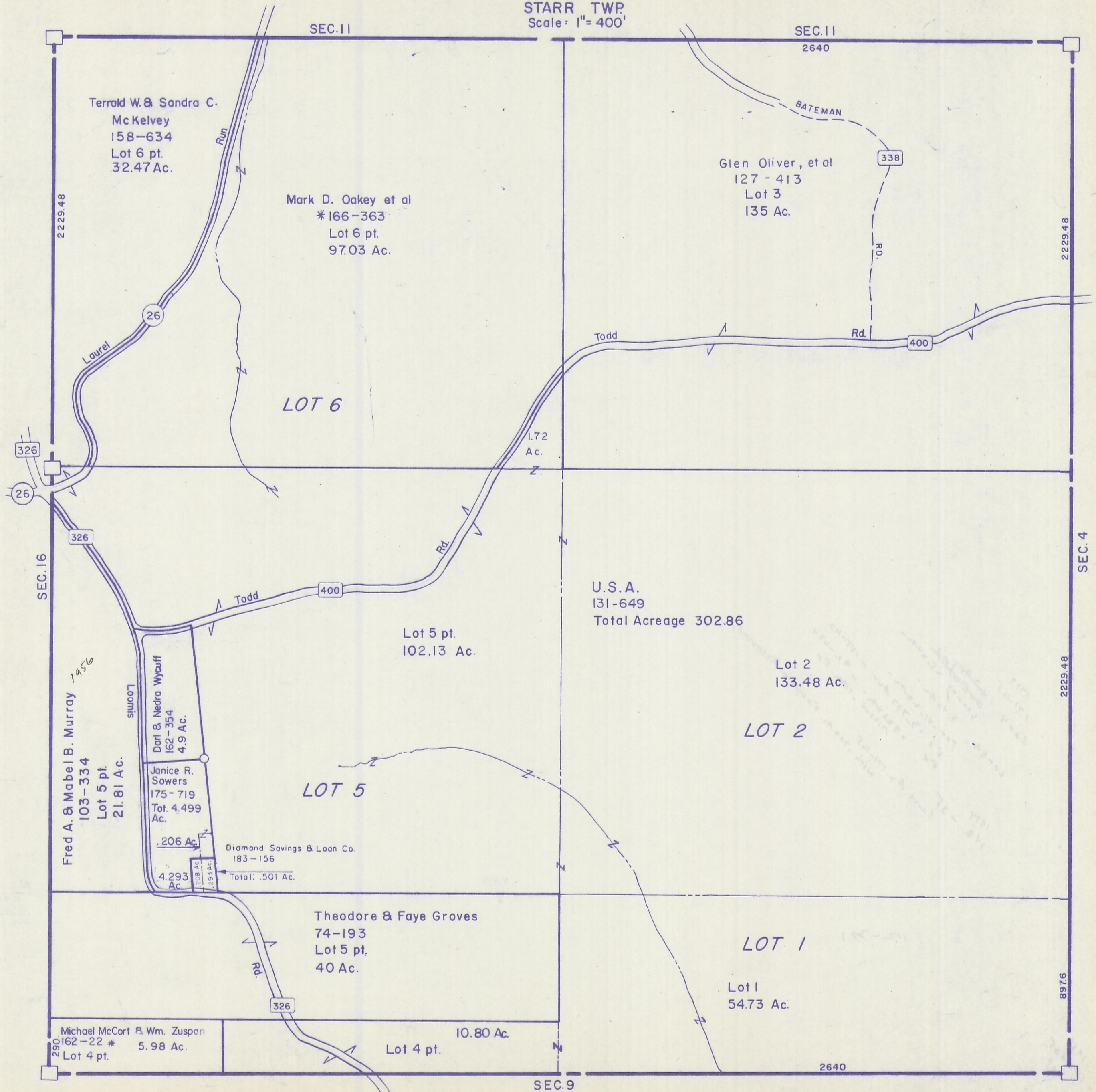


HOCKING COUNTY

Sec. 10 T 12 R 16

STARR TWP.
Scale: 1" = 400'



Terrold W. & Sandra C.
McKelvey
158-634
Lot 6 pt.
32.47 Ac.

Mark D. Oakey et al
*166-363
Lot 6 pt.
97.03 Ac.

Glen Oliver, et al
127-413
Lot 3
135 Ac.

U.S.A.
131-649
Total Acreage 302.86

Lot 2
133.48 Ac.

Fred A. & Mabel B. Murray
103-334
Lot 5 pt.
21.81 Ac.

Darl & Nedra Wycuff
162-354
4.9 Ac.

Janice R. Sowers
175-719
Tot. 4.499
Ac.

Diamond Savings & Loan Co.
183-156
Total: .501 Ac.

LOT 5

Theodore & Faye Groves
74-193
Lot 5 pt.
40 Ac.

LOT 1

Lot 1
54.73 Ac.

Michael McCort & Wm. Zuspan
162-22 *
Lot 4 pt.
5.98 Ac.

Lot 4 pt.
10.80 Ac.

SEC. 10