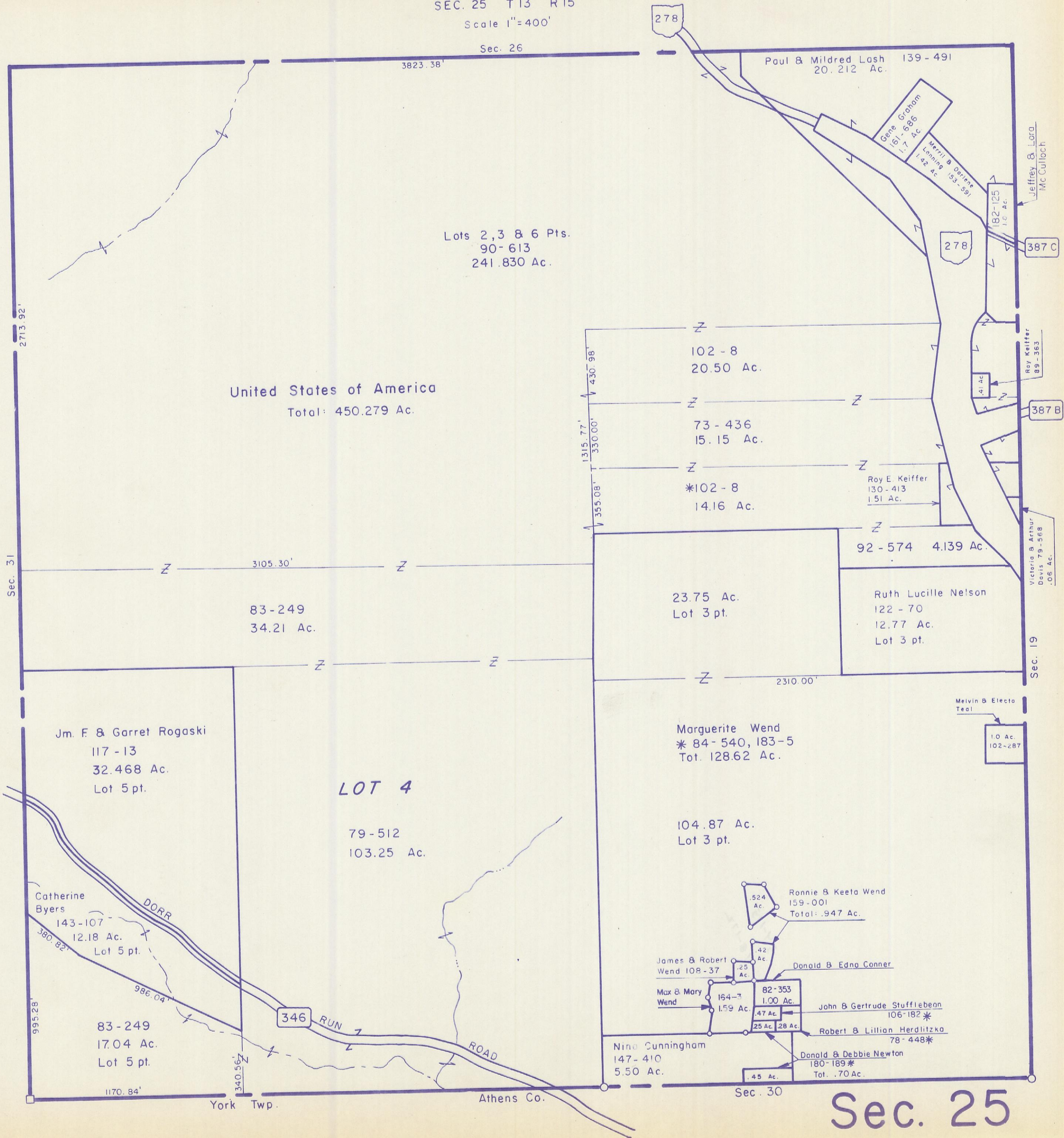


HOCKING COUNTY

WARD TWP

SEC. 25 T13 R15

Scale 1"=400'



Sec. 26

278

Paul & Mildred Lash 139-491
20.212 Ac.

Gene Graham
161-686
1.7 Ac.

Werril & Darlene
Lonning 153-591
1.92 Ac.

Jeffrey & Lara
McCulloch

Lots 2, 3 & 6 Pts.
90-613
241.830 Ac.

278

387 C

United States of America
Total: 450.279 Ac.

102-8
20.50 Ac.

73-436
15.15 Ac.

*102-8
14.16 Ac.

Roy E. Keiffer
130-413
1.51 Ac.

Roy Keiffer
89-363

387 B

92-574 4.139 Ac.

23.75 Ac.
Lot 3 pt.

Ruth Lucille Nelson
122-70
12.77 Ac.
Lot 3 pt.

Victoria & Arthur
Davis 79-568
.06 Ac.

Sec. 19

3105.30'

83-249
34.21 Ac.

2310.00'

Melvin & Electa
Teal

1.0 Ac.
102-287

Jm. F. & Garret Rogaski
117-13
32.468 Ac.
Lot 5 pt.

LOT 4

79-512
103.25 Ac.

Marguerite Wend
*84-540, 183-5
Tot. 128.62 Ac.

104.87 Ac.
Lot 3 pt.

Catherine
Byers
143-107
12.18 Ac.
Lot 5 pt.

83-249
17.04 Ac.
Lot 5 pt.

346 RUN

ROAD

James & Robert
Wend 108-37
.25 Ac.

Max & Mary
Wend 164-3
1.59 Ac.

.42 Ac.

Donald & Edna Conner

82-353
1.00 Ac.

John & Gertrude Stufflebean
106-182*

Robert & Lillian Herdlitzka
78-448*

Nina Cunningham
147-410
5.50 Ac.

.25 Ac.

Donald & Debbie Newton
180-189*
Tot. .70 Ac.

.45 Ac.

Sec. 30

Sec. 25

York Twp.

Athens Co.

2713.92'

Sec. 31

995.28'

1170.84'

340.56'

3823.38'

1315.77'

430.98'

330.00'

355.08'