

HOCKING COUNTY

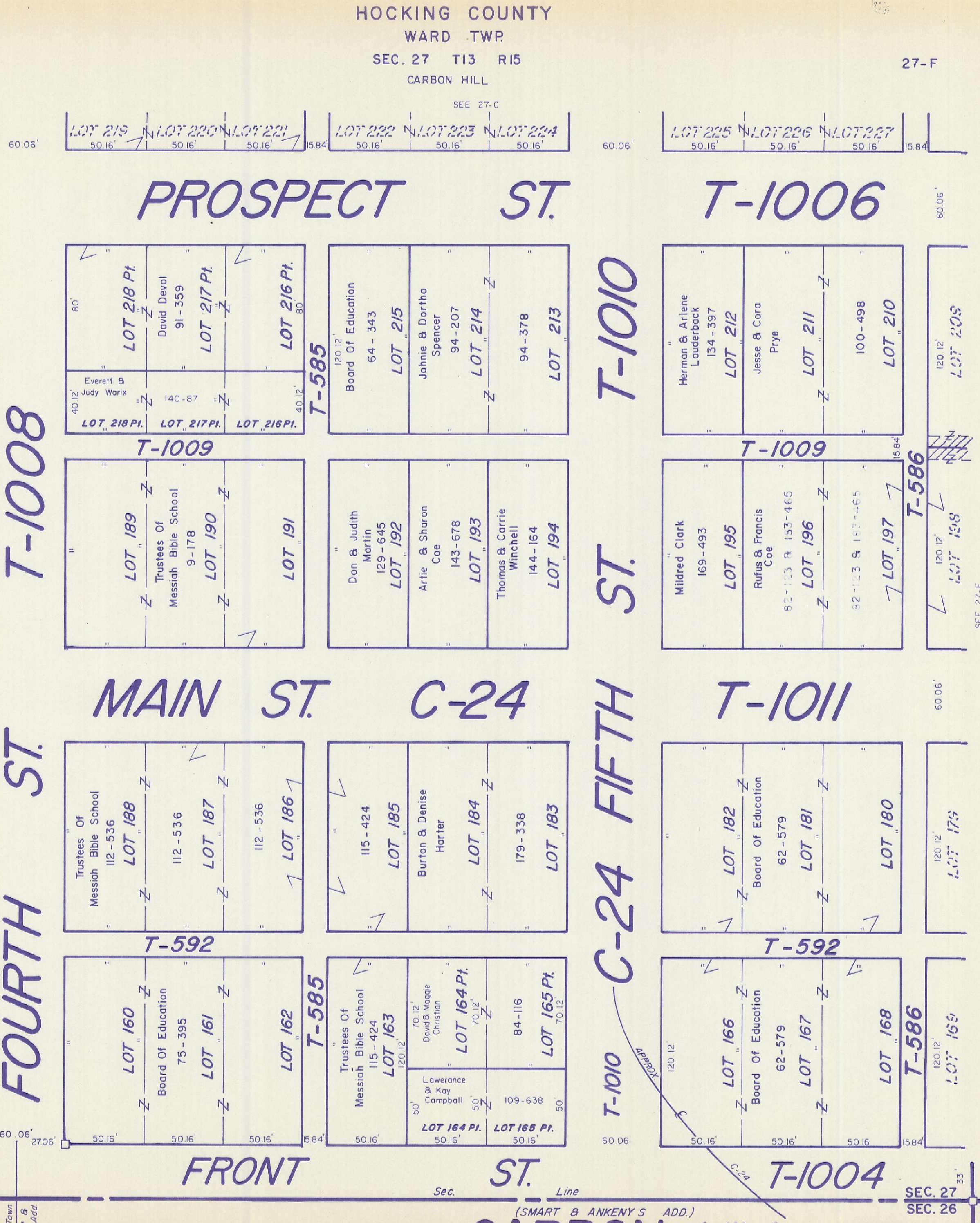
WARD TWP.

SEC. 27 T13 R15

CARBON HILL

27-F

SEE 27-C



SEE 27-G

FOURTH ST. T-1008

MAIN ST. C-24

T-1010 C-24 FIFTH ST. T-1011

PROSPECT ST. T-1006

FRONT ST. T-1004

Original Town Smart & Ankeny's Add.

(SMART & ANKENY'S ADD.)

SEC. 27 SEC. 26 SEC. 21 SEC. 20

CARBON HILL 27-F