

HOCKING COUNTY

WARD TWP.

SEC. 27 T13 R15

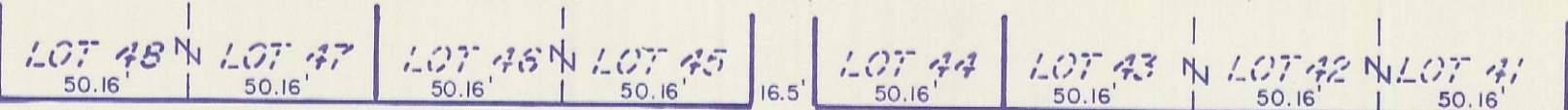
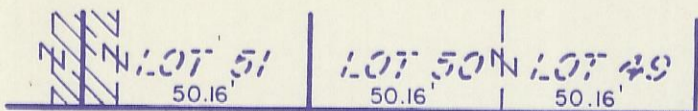
CARBON HILL

27-G

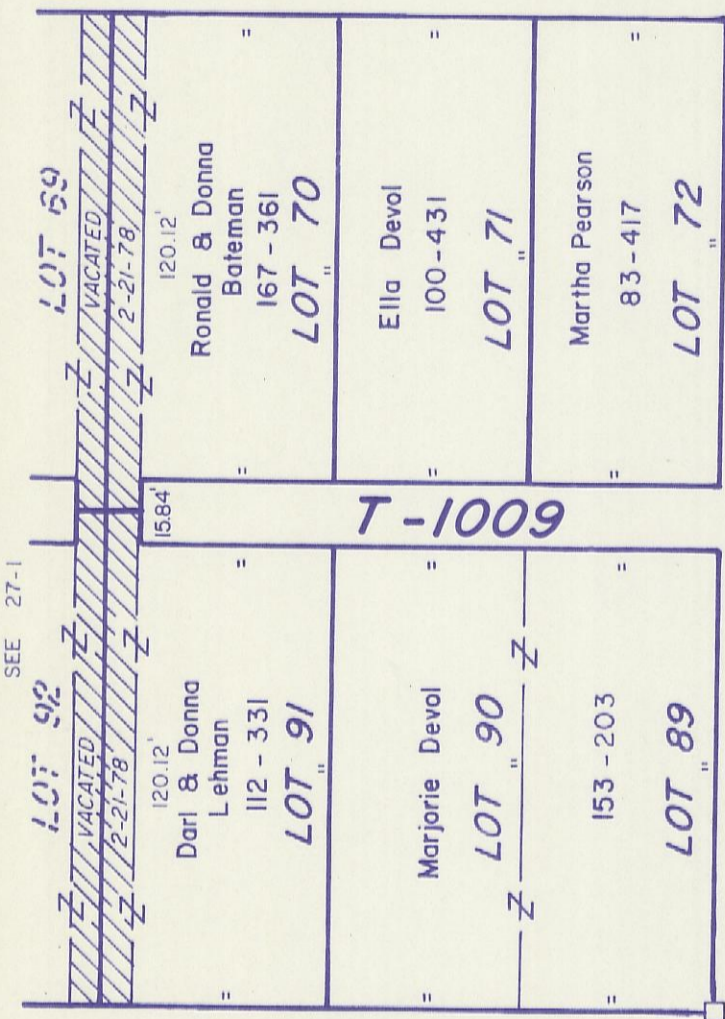
NORTH

Scale 1" = 50'

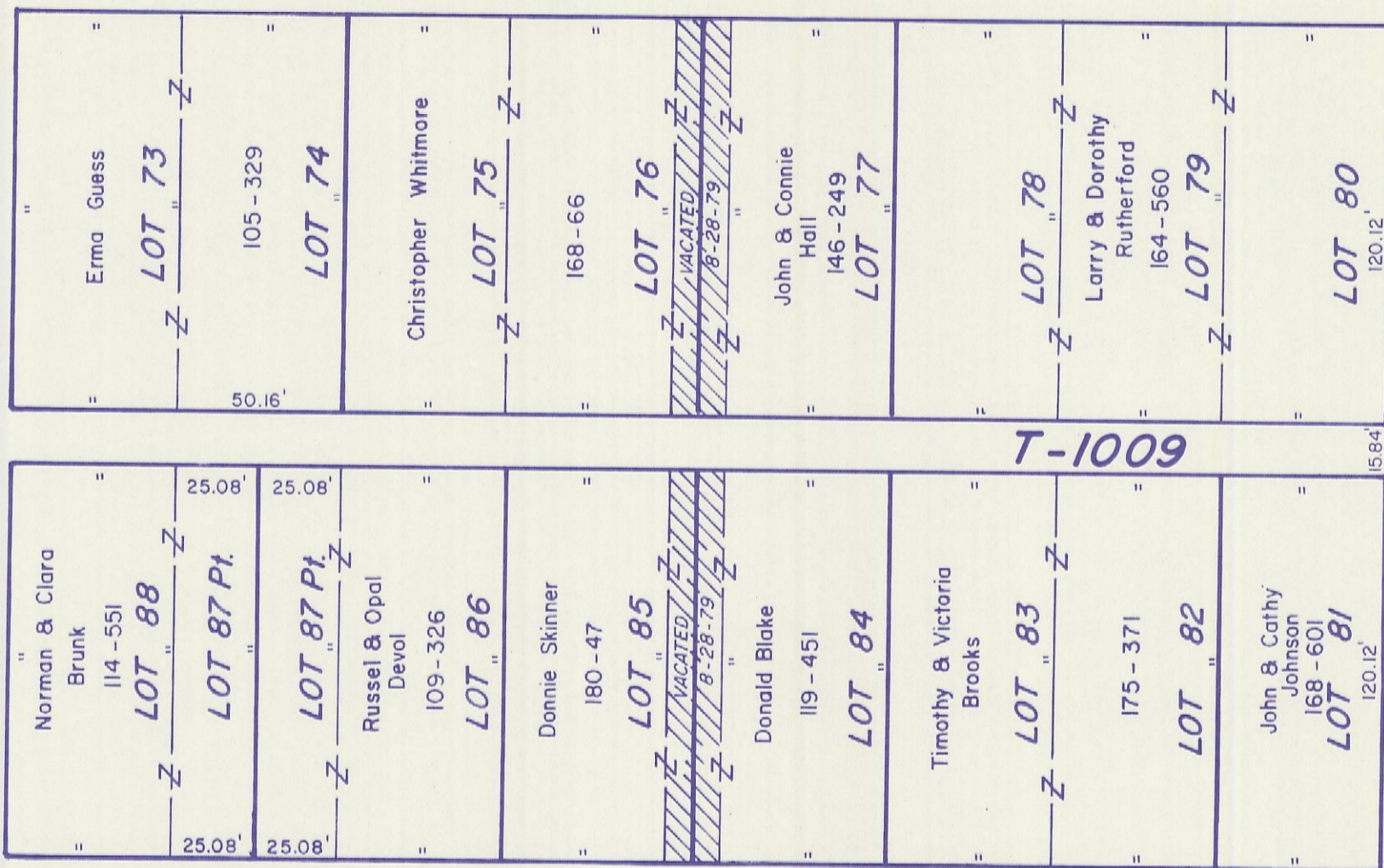
SEE 27-B



PROSPECT ST. T-1006



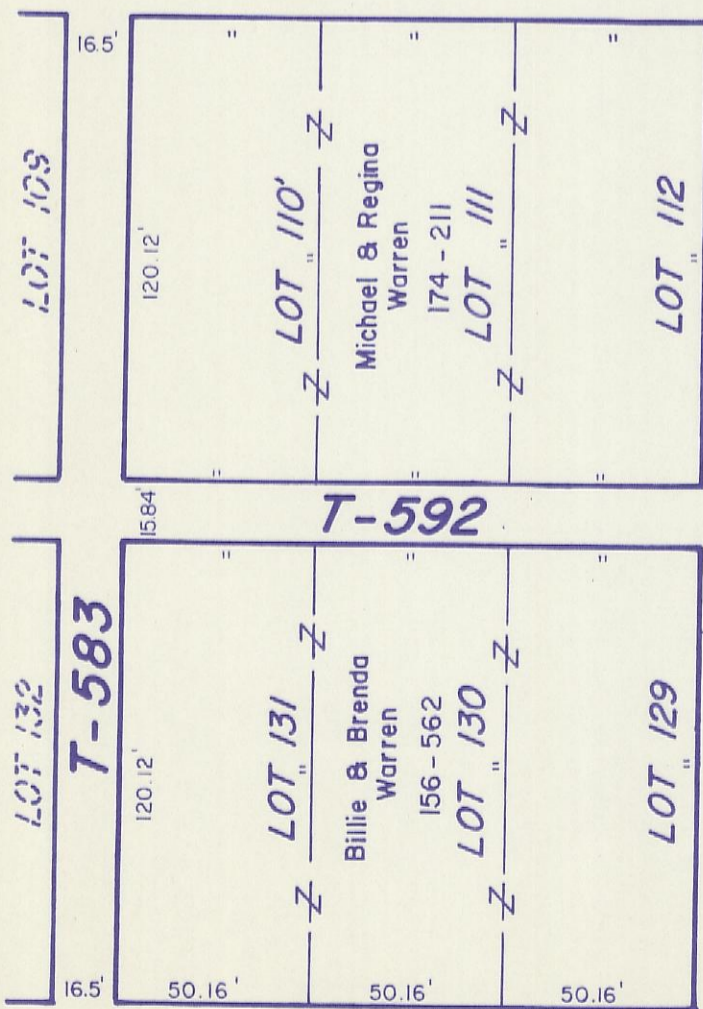
ST. T-1007



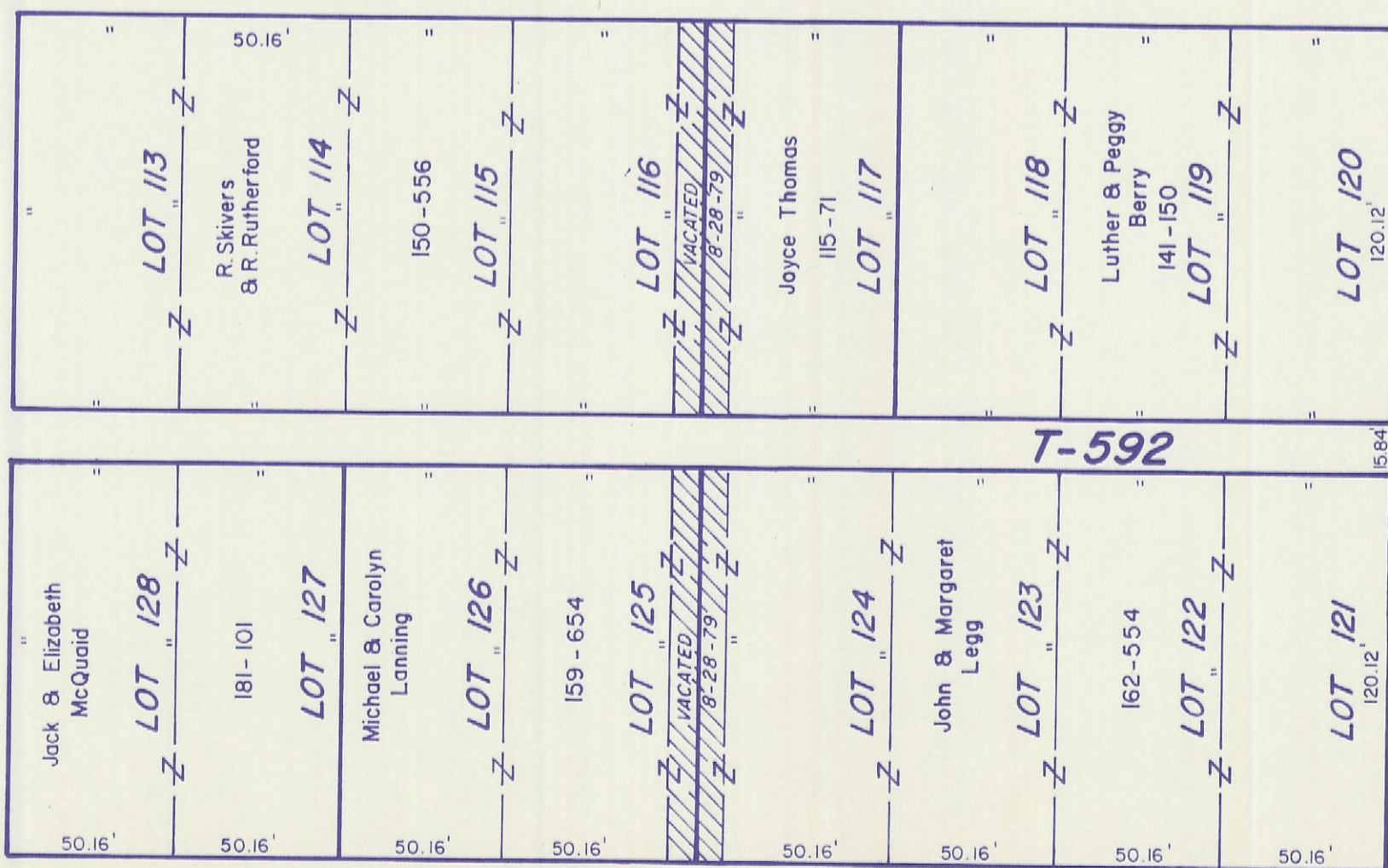
MAIN ST.

ST.

C-24



THIRD ST.



FRONT ST.

ST.

T-1004

SEC. 27
SEC. 26

Sec. Line

(Original Town)
CARBON HILL 27-G

Original Town
Smart & Ankeny's
Add.

ST. T-1008

LOT 218

LOT 189

SEE 27-F

LOT 188

LOT 160

33'

60.06'

60.06'

60.06'

60.06'

33'

33'

60.06'

27.06'