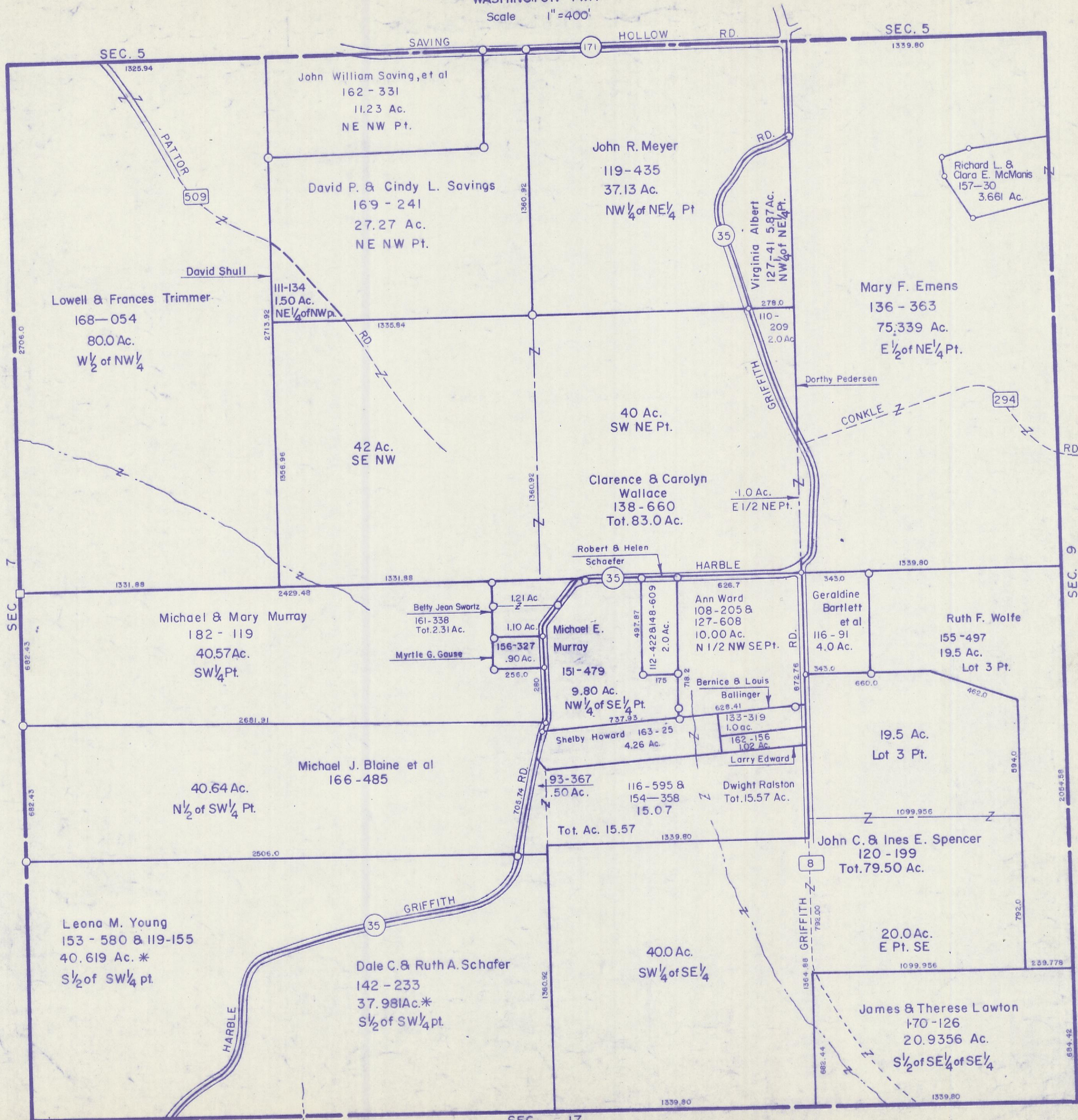


HOCKING COUNTY

Sec. 8 T13 R17

WASHINGTON TWP.

Scale 1"=400'



SEC. 5 1325.94

SAVING HOLLOW RD. 171

John William Saving, et al
162 - 331
11.23 Ac.
NE NW Pt.

John R. Meyer
119 - 435
37.13 Ac.
NW 1/4 of NE 1/4 Pt

Richard L. & Clara E. McManis
157-30
3.661 Ac.

David P. & Cindy L. Savings
169 - 241
27.27 Ac.
NE NW Pt.

Virginia Albert
127-41 5.87 Ac.
NW 1/4 of NE 1/4 Pt.

Mary F. Emens
136 - 363
75.339 Ac.
E 1/2 of NE 1/4 Pt.

Lowell & Frances Trimmer
168-054
80.0 Ac.
W 1/2 of NW 1/4

III-134
1.50 Ac.
NE 1/4 of NW p.

42 Ac.
SE NW

40 Ac.
SW NE Pt.

Clarence & Carolyn Wallace
138 - 660
Tot. 83.0 Ac.

Robert & Helen Schaefer

HARBLE

Betty Jean Swartz
161-338
Tot. 2.31 Ac.

Myrtle G. Gause
156-327
.90 Ac.

Michael E. Murray
151-479
9.80 Ac.
NW 1/4 of SE 1/4 Pt.

Ann Ward
108-205 & 127-608
10.00 Ac.
N 1/2 NW SE Pt.

Bernice & Louis Ballinger
133-319
1.0 ac.

162-156
1.02 Ac.

Larry Edward

Shelby Howard
163-25
4.26 Ac.

Dwight Ralston
Tot. 15.57 Ac.

93-367
.50 Ac.

116-595 & 154-358
15.07

Tot. Ac. 15.57

Ruth F. Wolfe
155-497
19.5 Ac.
Lot 3 Pt.

Geraldine Bartlett et al
116-91
4.0 Ac.

19.5 Ac.
Lot 3 Pt.

John C. & Ines E. Spencer
120 - 199
Tot. 79.50 Ac.

20.0 Ac.
E Pt. SE

Leona M. Young
153 - 580 & 119-155
40.619 Ac. *
S 1/2 of SW 1/4 pt.

Dale C. & Ruth A. Schafer
142 - 233
37.981 Ac. *
S 1/2 of SW 1/4 pt.

James & Therese Lawton
170-126
20.9356 Ac.
S 1/2 of SE 1/4 of SE 1/4

SEC. 5 1339.80

SEC. 7 2706.0

SEC. 9 1539.80

SEC. 17 1339.80

SEC. 8

SEC. 8