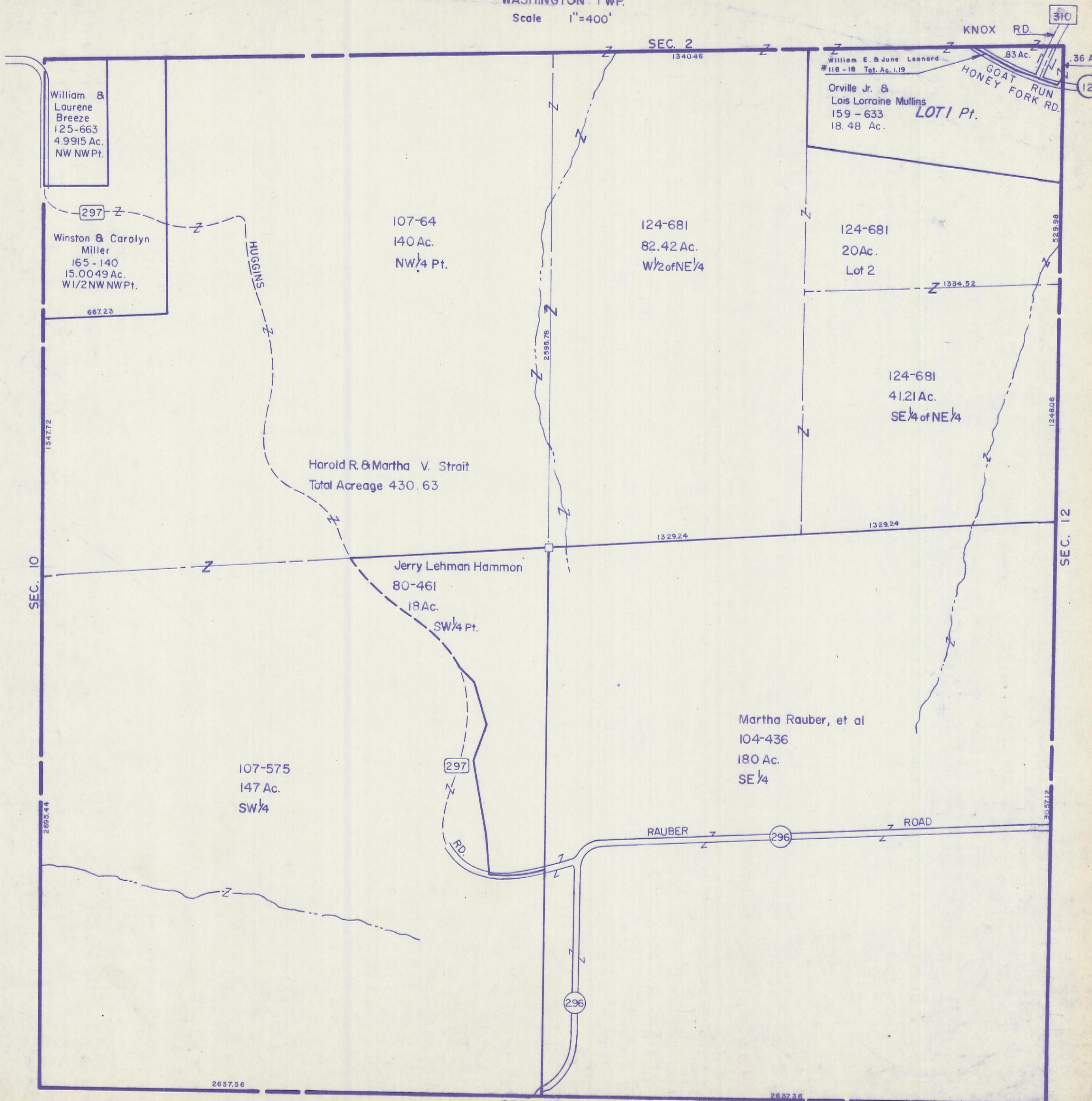


HOCKING COUNTY

Sec. 11 T13 R17

WASHINGTON TWP.

Scale 1"=400'



William & Laurene Breeze
125-663
4.9915 Ac.
NW NW Pt.

297
Winston & Carolyn Miller
165-140
15.0049 Ac.
W 1/2 NW NW Pt.
667.23

107-64
140 Ac.
NW 1/4 Pt.

124-681
82.42 Ac.
W 1/2 of NE 1/4

William E. & June Leonard
#118-18 Tot. Ac. 1.19
Orville Jr. & Lois Lorraine Mullins
159-633
18.48 Ac.
LOT 1 Pt.

124-681
20 Ac.
Lot 2

124-681
41.21 Ac.
SE 1/4 of NE 1/4

Harold R. & Martha V. Strait
Total Acreage 430.63

Jerry Lehman Hammon
80-461
18 Ac.
SW 1/4 Pt.

Martha Rauber, et al
104-436
180 Ac.
SE 1/4

107-575
147 Ac.
SW 1/4

SEC. 11