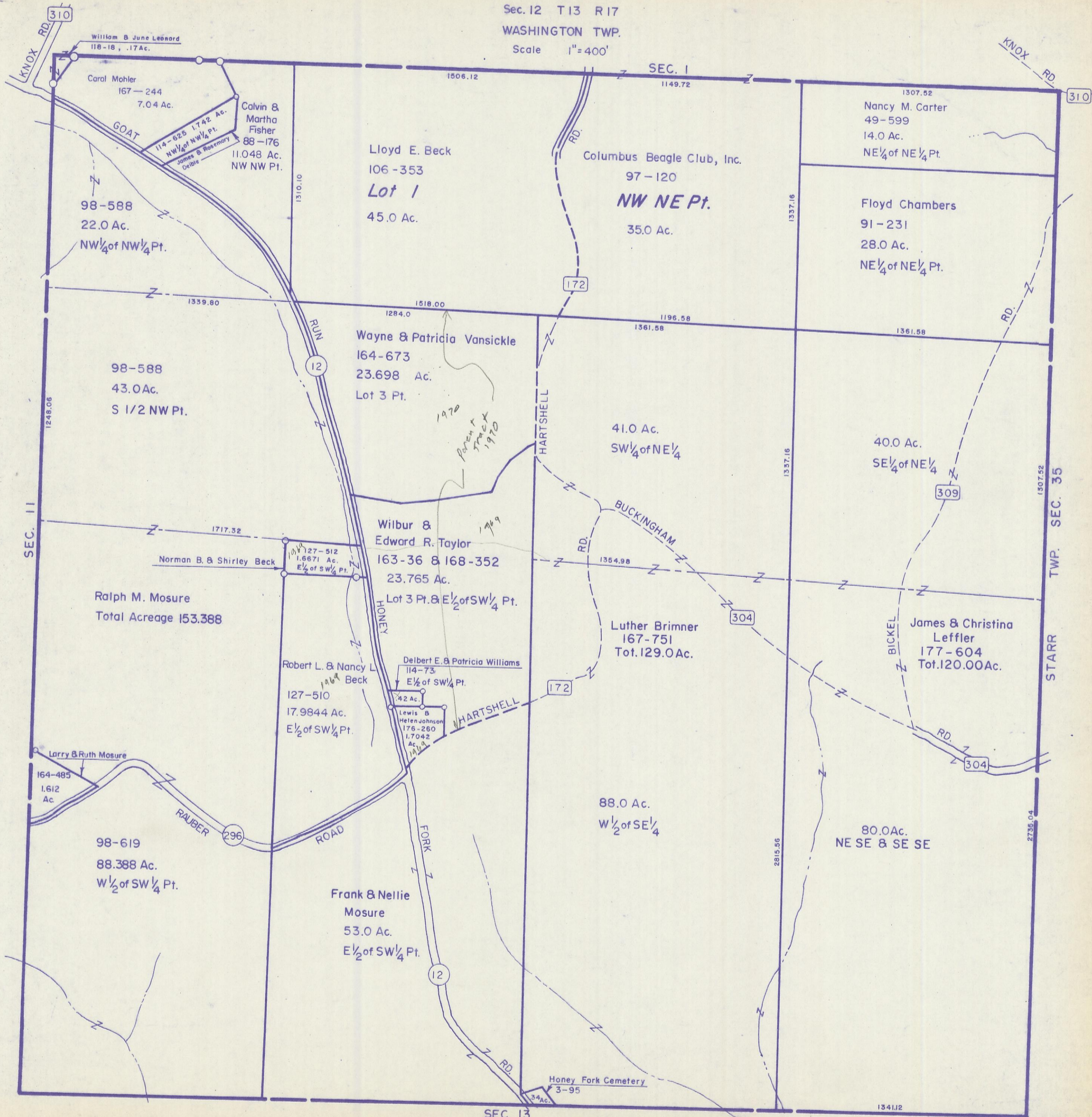


HOCKING COUNTY

Sec. 12 T13 R17

WASHINGTON TWP.

Scale 1" = 400'



SEC. 12

William B June Leonard
118-18, .17 Ac.

Carol Mohler
167-244
7.04 Ac.

Calvin & Martha Fisher
88-176
11.048 Ac.
NW NW Pt.

Lloyd E. Beck
106-353
Lot 1
45.0 Ac.

Columbus Beagle Club, Inc.
97-120
NW NE Pt.
35.0 Ac.

Nancy M. Carter
49-599
14.0 Ac.
NE 1/4 of NE 1/4 Pt.

Floyd Chambers
91-231
28.0 Ac.
NE 1/4 of NE 1/4 Pt.

98-588
22.0 Ac.
NW 1/4 of NW 1/4 Pt.

98-588
43.0 Ac.
S 1/2 NW Pt.

Wayne & Patricia Vansickle
164-673
23.698 Ac.
Lot 3 Pt.

41.0 Ac.
SW 1/4 of NE 1/4

40.0 Ac.
SE 1/4 of NE 1/4

Wilbur & Edward R. Taylor
163-36 & 168-352
23.765 Ac.
Lot 3 Pt. & E 1/2 of SW 1/4 Pt.

Luther Brimner
167-751
Tot. 129.0 Ac.

James & Christina Leffler
177-604
Tot. 120.00 Ac.

Ralph M. Mosure
Total Acreage 153.388

Robert L. & Nancy L. Beck
127-510
17.9844 Ac.
E 1/2 of SW 1/4 Pt.

Delbert E. & Patricia Williams
114-73
E 1/2 of SW 1/4 Pt.

Lewis & Helen Johnson
176-260
1.7042 Ac.

Larry & Ruth Mosure
164-485
1.612 Ac.

98-619
88.388 Ac.
W 1/2 of SW 1/4 Pt.

Frank & Nellie Mosure
53.0 Ac.
E 1/2 of SW 1/4 Pt.

88.0 Ac.
W 1/2 of SE 1/4

80.0 Ac.
NE SE & SE SE

Honey Fork Cemetery
3-95

SEC. 13

1341.12

KNOX RD.

KNOX RD. 310

310

SEC. 1

SEC. 11

TWP. SEC. 35

STARR

296

12

172

304

309

304

172

1248.06

1339.80

1310.10

1506.12

1149.72

1284.0

1518.00

1196.58

1361.58

1361.58

1717.32

1354.98

1337.16

1507.52

2815.56

2735.04

34 Ac.