

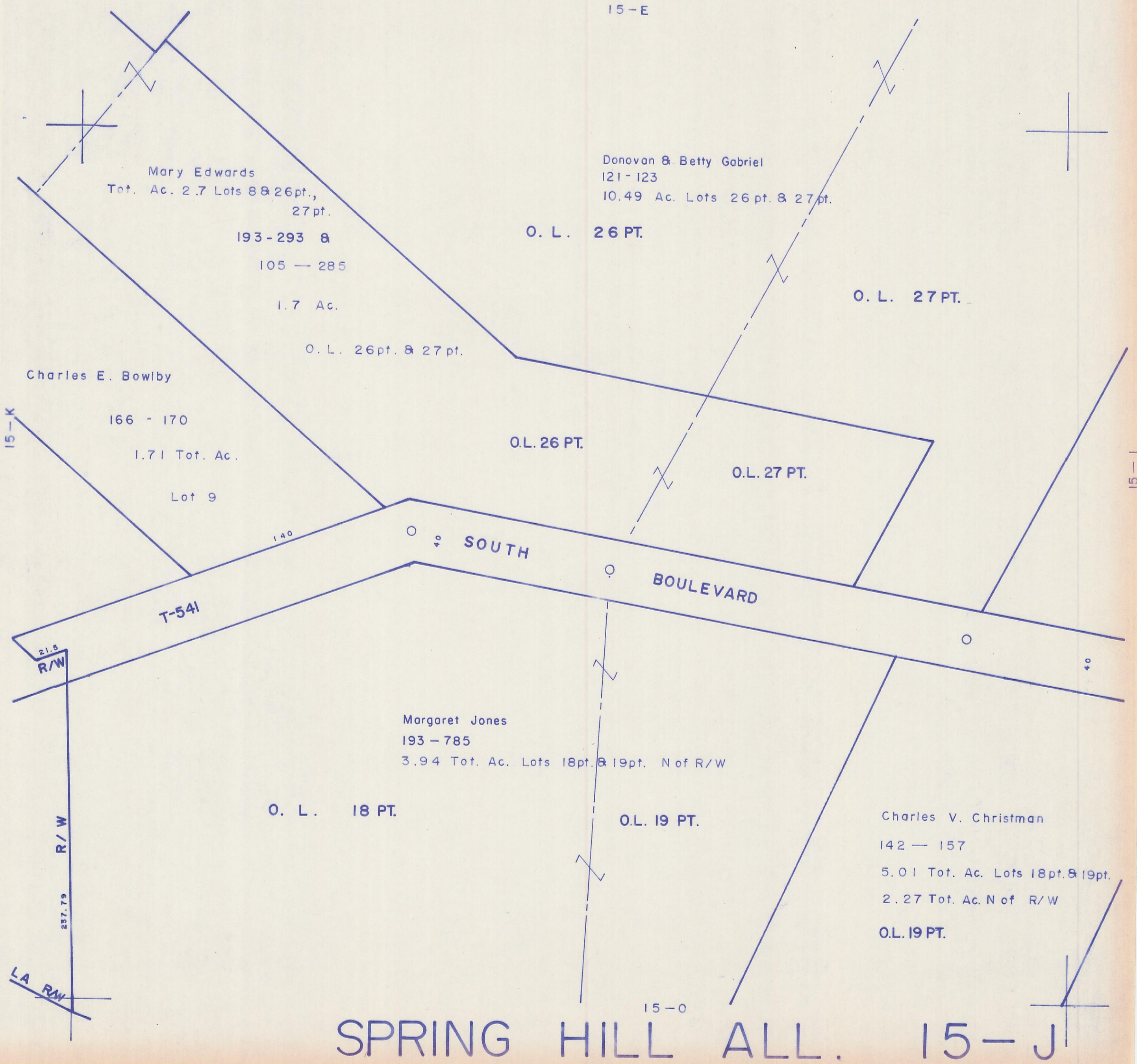
HOCKING COUNTY

Sec. 15 T14 R17

FALLS TWP.

Scale 1" = 50'

15-J



Mary Edwards
Tot. Ac. 2.7 Lots 8 & 26pt.,
27pt.

193 - 293 &
105 - 285
1.7 Ac.

O. L. 26pt. & 27pt.

Charles E. Bowlby

166 - 170
1.71 Tot. Ac.
Lot 9

O.L. 26 PT.

O.L. 27 PT.

SOUTH

BOULEVARD

T-541

21.5
R/W

R/W

257.79

LA RW

Margaret Jones
193 - 785
3.94 Tot. Ac. Lots 18pt. & 19pt. N of R/W

O. L. 18 PT.

O.L. 19 PT.

Charles V. Christman
142 - 157
5.01 Tot. Ac. Lots 18pt. & 19pt.
2.27 Tot. Ac. N of R/W
O.L. 19 PT.

15-E

Donovan & Betty Gabriel
121 - 123
10.49 Ac. Lots 26pt. & 27pt.

O. L. 26 PT.

O. L. 27 PT.

15-K

15-I

15-0

SPRING HILL ALL. 15-J