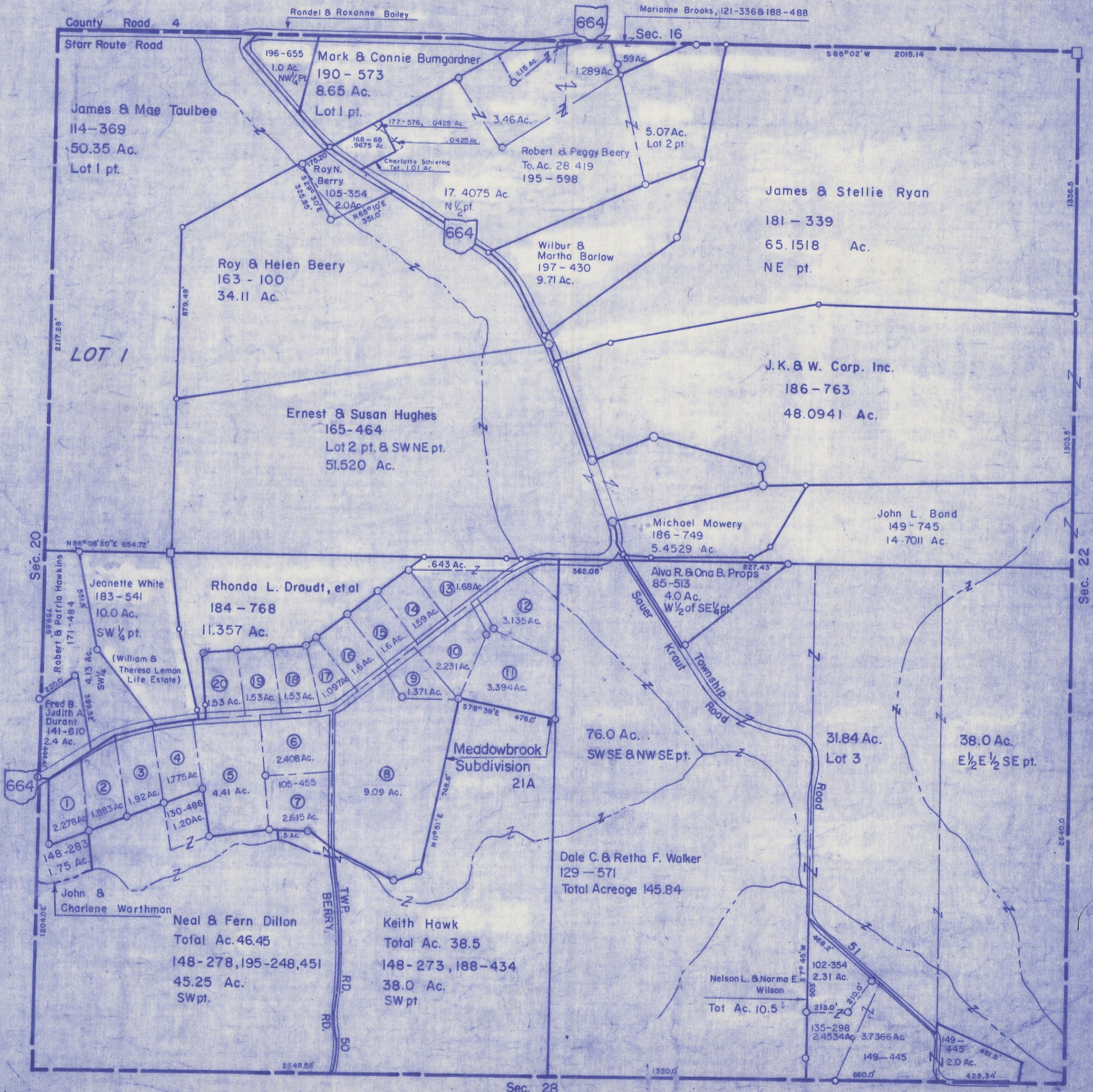


HOCKING COUNTY

Sec. 21 T14 R17

FALLS TWP.

Scale 1" = 400'



County Road 4

Starr Route Road

Rondel & Roxanne Bailey

664

Marianne Brooks, 121-336 & 188-488

Sec. 16

S 85° 02' W 2015.14

James & Mae Taulbee
114-369
50.35 Ac.
Lot 1 pt.

196-655
1.0 Ac.
NW 1/4 Pt.
Mark & Connie Bumgardner
190-573
8.65 Ac.
Lot 1 pt.

1.18 Ac.
1.289 Ac.
59 Ac.
3.46 Ac.
5.07 Ac.
Lot 2 pt.
Robert & Peggy Beery
To. Ac. 28 419
195-598

177-576, .0425 Ac.
168-68 .9675 Ac.
Charlotte Schiering Tot. 1.01 Ac.

179-23
Roy N. Beery
105-354
2.0 Ac.
S 52° 35' E 325.88'
N 65° 10' E 351.0'

17.4075 Ac.
N 1/2 pt.
664

Wilbur & Martha Barlow
197-430
9.71 Ac.

James & Stellie Ryan
181-339
65.1518 Ac.
NE pt.

Roy & Helen Beery
163-100
34.11 Ac.

LOT 1

Ernest & Susan Hughes
165-464
Lot 2 pt. & SWNE pt.
51.520 Ac.

J.K. & W. Corp. Inc.
186-763
48.0941 Ac.

Michael Mowery
186-749
5.4529 Ac.

John L. Bond
149-745
14.7011 Ac.

Sec. 20

Jeannette White
183-541
10.0 Ac.
SW 1/4 pt.

Rhonda L. Draudt, et al
184-768
11.357 Ac.

Alva R. & Ona B. Props
85-513
4.0 Ac.
W 1/2 of SE 1/4 pt.

Robert & Patricia Hawkins
171-484
3.195
Fred B. Judith A. Durant
141-610
2.4 Ac.

(William & Theresa Lemon Life Estate)

1.53 Ac. 1.53 Ac. 1.53 Ac. 1.097 Ac. 1.6 Ac. 1.6 Ac. 1.59 Ac. 1.68 Ac. 3.135 Ac.

2.231 Ac. 3.394 Ac. 1.371 Ac. 476.0'

76.0 Ac.
SWSE & NWSE pt.

31.84 Ac.
Lot 3

38.0 Ac.
E 1/2 E 1/2 SE pt.

664

1.775 Ac. 4.41 Ac. 2.408 Ac. 105-455 2.515 Ac. 1.5 Ac. 2.278 Ac. 1.883 Ac. 1.92 Ac. 130-486 1.20 Ac. 148-283 1.75 Ac.

Meadowbrook Subdivision 21A

Keith Hawk
Total Ac. 38.5
148-273, 188-434
38.0 Ac.
SW pt.

Neal & Fern Dillon
Total Ac. 46.45
148-278, 195-248, 451
45.25 Ac.
SW pt.

Dale C. & Retha F. Walker
129-571
Total Acreage 145.84

Nelson L. & Norma E. Wilson
102-354 2.31 Ac.
Tot. Ac. 10.5

135-298 2.4534 Ac. 3.7366 Ac. 149-445 2.0 Ac.

1204.06

BERRY TWP. RD. 50

Sec. 28

SEC. 21