

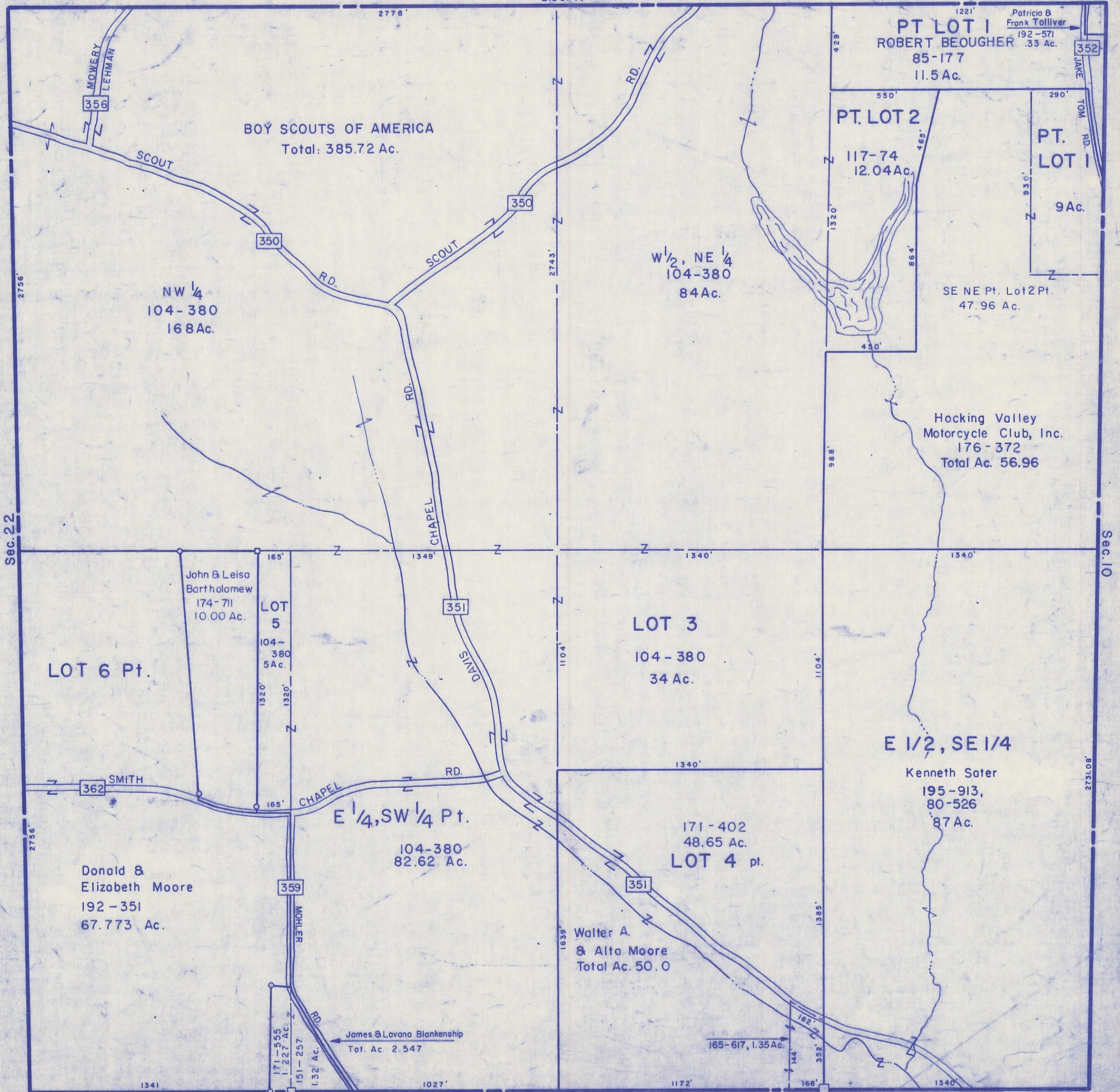
HOCKING COUNTY

Sec. 16 T 13 R 16

GREEN TWP.

Scale 1" = 400'

Sec. 17



BOY SCOUTS OF AMERICA
Total: 385.72 Ac.

NW 1/4
104-380
168 Ac.

W 1/2, NE 1/4
104-380
84 Ac.

PT. LOT 1
ROBERT BEOUGHER
85-177
11.5 Ac.
Patricio & Frank Tolliver
192-571
.33 Ac.

PT. LOT 2
117-74
12.04 Ac.

PT. LOT 1
9 Ac.

SE NE Pt. Lot 2 Pt.
47.96 Ac.

Hocking Valley
Motorcycle Club, Inc.
176-372
Total Ac. 56.96

LOT 6 Pt.

John & Leisa
Bartholomew
174-711
10.00 Ac.

LOT 5
104-380
5 Ac.

LOT 3
104-380
34 Ac.

E 1/2, SE 1/4
Kenneth Soter
195-913,
80-526
87 Ac.

Donald &
Elizabeth Moore
192-351
67.773 Ac.

E 1/4, SW 1/4 Pt.
104-380
82.62 Ac.

LOT 4 pt.
171-402
48.65 Ac.

Walter A.
& Alta Moore
Total Ac. 50.0

James & Lavona Blankenship
Tot. Ac. 2.547

165-617, 1.35 Ac.

Sec. 15

SEC. 16