

HOCKING COUNTY

Sec. 2 T12 R18

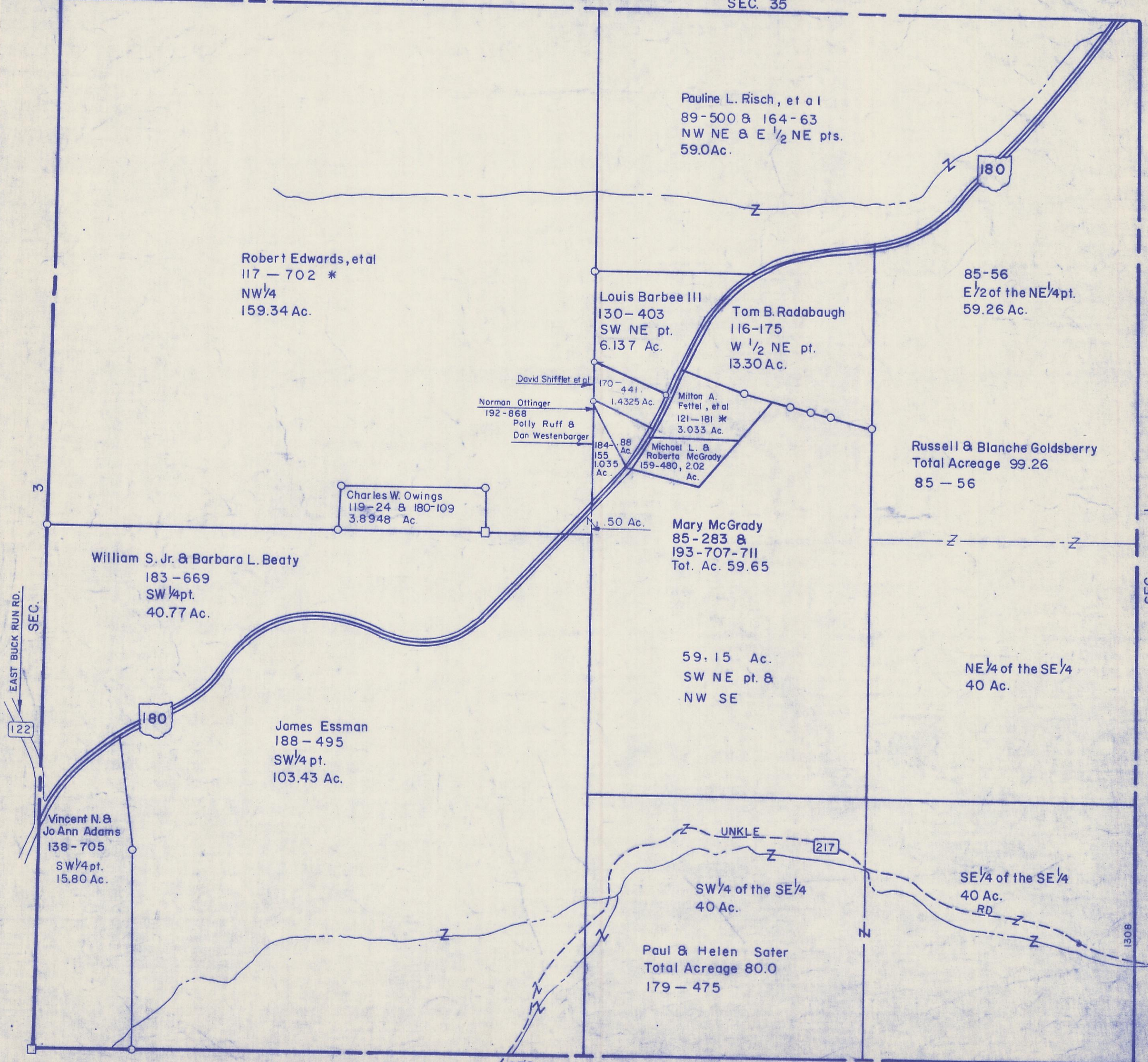
LAUREL TWP.

Scale 1"=400'

GOOD HOPE  
SEC. 34

GOOD HOPE TWP.

SEC. 35



Pauline L. Risch, et al  
89-500 & 164-63  
NW NE & E 1/2 NE pts.  
59.0Ac.

Robert Edwards, et al  
117-702 \*  
NW 1/4  
159.34 Ac.

Louis Barbee III  
130-403  
SW NE pt.  
6.137 Ac.

Tom B. Radabaugh  
116-175  
W 1/2 NE pt.  
13.30 Ac.

85-56  
E 1/2 of the NE 1/4 pt.  
59.26 Ac.

David Shifflet et al  
170-441  
1.4325 Ac.  
Norman Ottinger  
192-868  
Polly Ruff &  
Dan Westenbarger  
184-88  
155  
1.035  
Ac.

Milton A.  
Fettel, et al  
121-181 \*  
3.033 Ac.

Michael L. &  
Roberta McGrady  
159-480, 2.02  
Ac.

Russell & Blanche Goldsberry  
Total Acreage 99.26  
85-56

Charles W. Owings  
119-24 & 180-109  
3.8948 Ac.

Mary McGrady  
85-283 &  
193-707-711  
Tot. Ac. 59.65

William S. Jr. & Barbara L. Beaty  
183-669  
SW 1/4 pt.  
40.77 Ac.

59.15 Ac.  
SW NE pt. &  
NW SE

NE 1/4 of the SE 1/4  
40 Ac.

James Essman  
188-495  
SW 1/4 pt.  
103.43 Ac.

Vincent N. &  
Jo Ann Adams  
138-705  
SW 1/4 pt.  
15.80 Ac.

SW 1/4 of the SE 1/4  
40 Ac.

SE 1/4 of the SE 1/4  
40 Ac.  
RD

Paul & Helen Sater  
Total Acreage 80.0  
179-475

SEC. 2