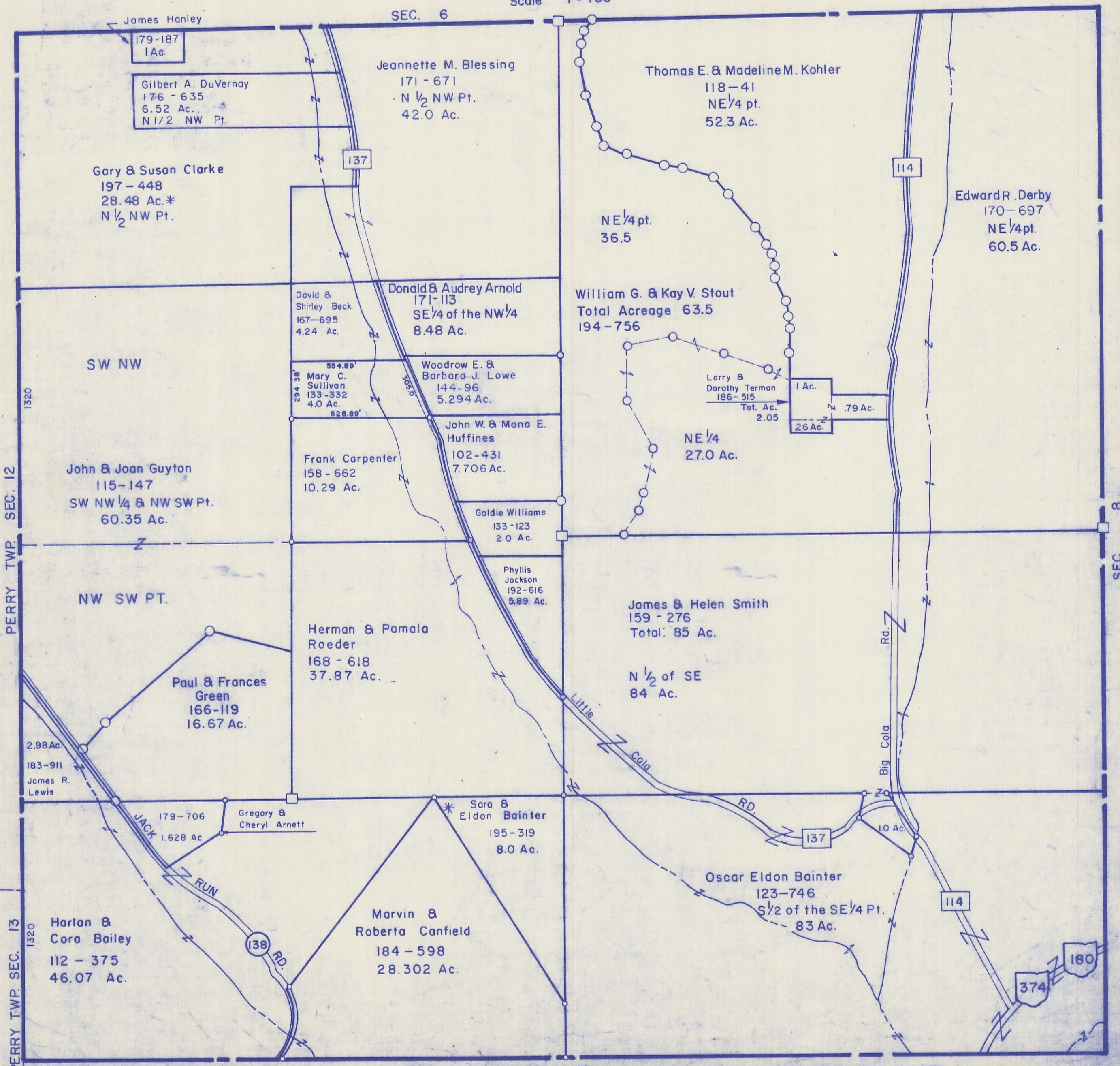


HOCKING COUNTY

Sec. 7 T12 R 18

LAUREL TWP.

Scale 1"=400'



James Hanley
179-187
1 Ac.

Gilbert A. DuVernay
176 - 635
6.52 Ac.
N 1/2 NW Pt.

Gary & Suson Clarke
197 - 448
28.48 Ac.*
N 1/2 NW Pt.

SEC. 6

Jeannette M. Blessing
171 - 671
N 1/2 NW Pt.
42.0 Ac.

Thomas E. & Madeline M. Kohler
118 - 41
NE 1/4 pt.
52.3 Ac.

Edward R. Derby
170 - 697
NE 1/4 pt.
60.5 Ac.

David & Shirley Beck
167-695
4.24 Ac.

Donald & Audrey Arnold
171-113
SE 1/4 of the NW 1/4
8.48 Ac.

William G. & Kay V. Stout
Total Acreage 63.5
194 - 756

Mary C. Sullivan
133-332
4.0 Ac.

Woodrow E. & Barbara J. Lowe
144-96
5.294 Ac.

Larry & Dorothy Terman
186-515
Tot. Ac. 2.05
1 Ac.
N 1/4
26 Ac.

John W. & Mona E. Huffines
102-431
7.706 Ac.

NE 1/4
27.0 Ac.

Frank Carpenter
158 - 662
10.29 Ac.

Goldie Williams
133 - 123
2.0 Ac.

John & Joan Guyton
115-147
SW NW 1/4 & NW SW Pt.
60.35 Ac.

NW SW PT.

Herman & Pamala Roeder
168 - 618
37.87 Ac.

James & Helen Smith
159 - 276
Total: 85 Ac.

N 1/2 of SE
84 Ac.

Paul & Frances Green
166-119
16.67 Ac.

2.98 Ac.
183-911
James R. Lewis

179-706
1.628 Ac.

Gregory & Cheryl Arnett

Sara & Eldon Bainter
195-319
8.0 Ac.

Oscar Eldon Bainter
123-746
S 1/2 of the SE 1/4 Pt.
83 Ac.

Harlan & Cora Bailey
112 - 375
46.07 Ac.

Marvin & Roberta Canfield
184 - 598
28.302 Ac.

PERRY TWP. SEC. 12

PERRY TWP. SEC. 13

SEC. 18

SEC. 7