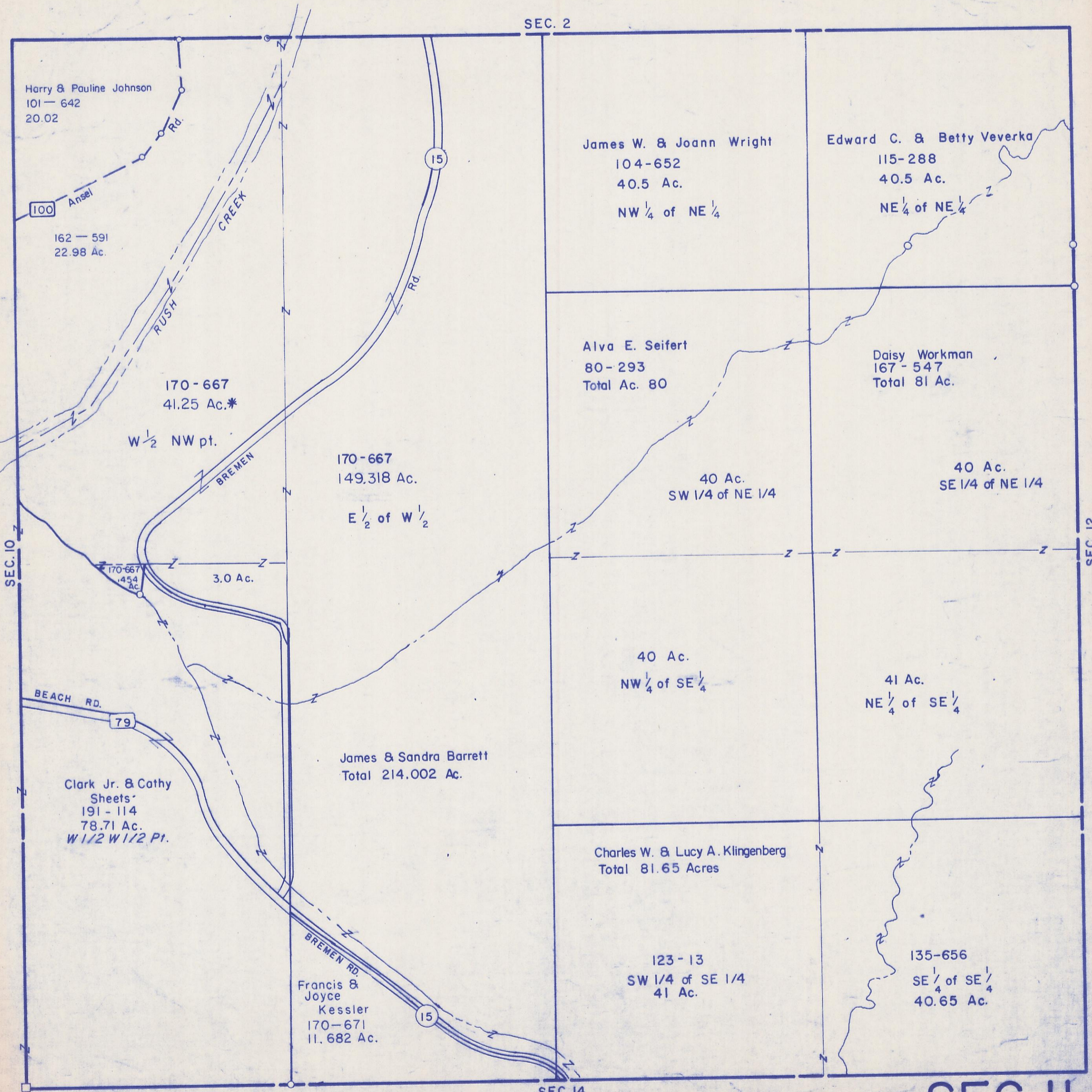


HOCKING COUNTY

SEC. II T. 15 R. 17

MARION TWP.

Scale 1"=400'



Harry & Pauline Johnson  
101 - 642  
20.02

100 Ansel  
162 - 591  
22.98 Ac.

170-667  
41.25 Ac.\*  
W 1/2 NW pt.

170-667  
149.318 Ac.  
E 1/2 of W 1/2

170-667  
3.0 Ac.  
3.0 Ac.

BEACH RD.  
79

Clark Jr. & Cathy  
Sheets  
191 - 114  
78.71 Ac.  
W 1/2 W 1/2 Pt.

James & Sandra Barrett  
Total 214.002 Ac.

Francis &  
Joyce  
Kessler  
170-671  
11.682 Ac.

SEC. 2

James W. & Joann Wright  
104-652  
40.5 Ac.  
NW 1/4 of NE 1/4

Edward C. & Betty Veverka  
115-288  
40.5 Ac.  
NE 1/4 of NE 1/4

Alva E. Seifert  
80-293  
Total Ac. 80

Daisy Workman  
167-547  
Total 81 Ac.

40 Ac.  
SW 1/4 of NE 1/4

40 Ac.  
SE 1/4 of NE 1/4

40 Ac.  
NW 1/4 of SE 1/4

41 Ac.  
NE 1/4 of SE 1/4

Charles W. & Lucy A. Klingenberg  
Total 81.65 Acres

123-13  
SW 1/4 of SE 1/4  
41 Ac.

135-656  
SE 1/4 of SE 1/4  
40.65 Ac.

SEC. 14

SEC II