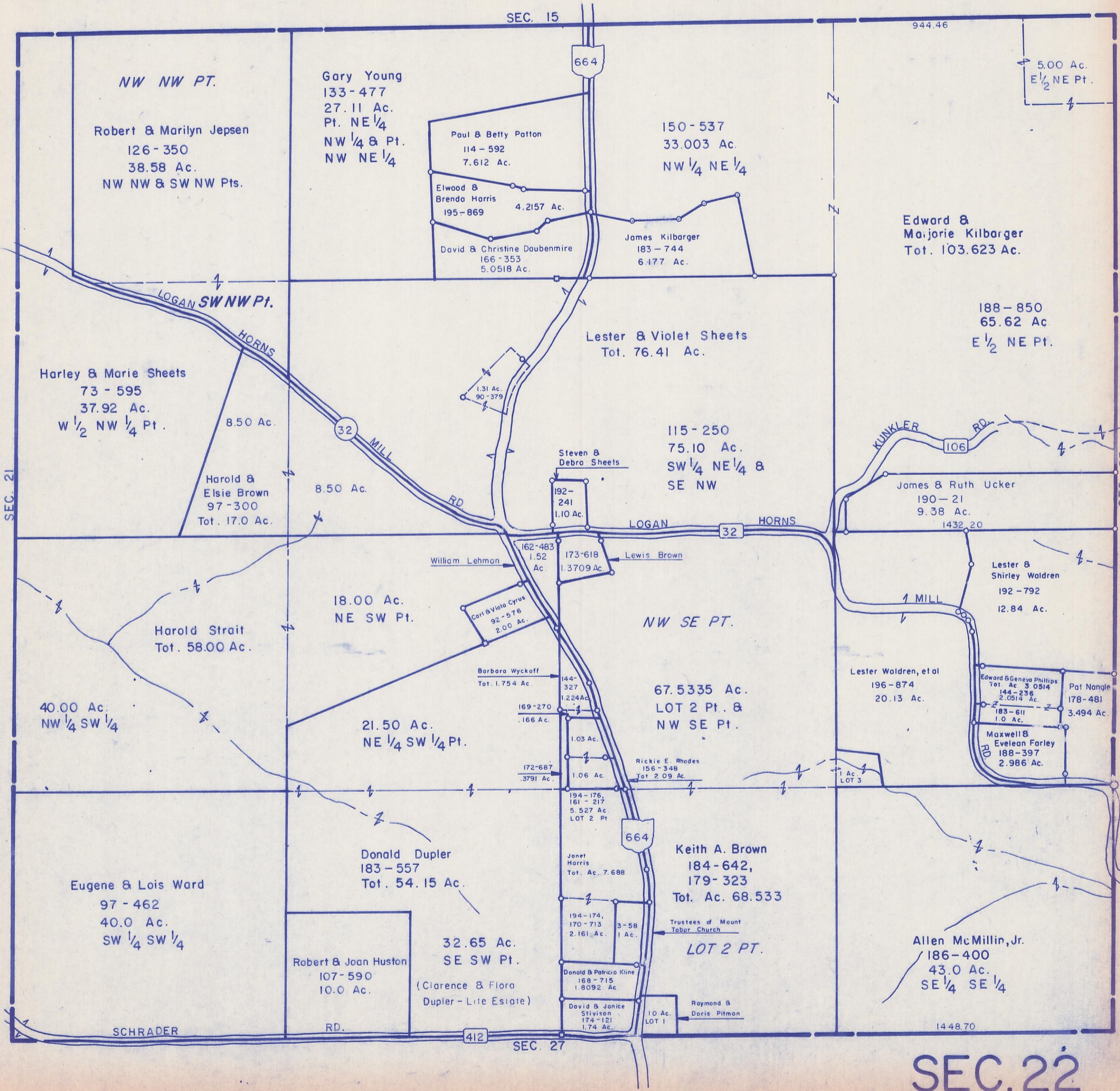


HOCKING COUNTY

MARION TWP.

SEC. 22 T 15 R 17

Scale 1" = 400'



NW NW PT.

Robert & Marilyn Jepsen
126-350
38.58 Ac.
NW NW & SW NW Pts.

Gary Young
133-477
27.11 Ac.
Pt. NE 1/4
NW 1/4 & Pt.
NW NE 1/4

Paul & Betty Patton
114-592
7.612 Ac.

Elwood & Brenda Harris
195-869
4.2157 Ac.

David & Christine Daubemire
166-353
5.0518 Ac.

150-537
33.003 Ac.
NW 1/4 NE 1/4

James Kilbarger
183-744
6.177 Ac.

Edward & Marjorie Kilbarger
Tot. 103.623 Ac.

188-850
65.62 Ac.
E 1/2 NE Pt.

5.00 Ac.
E 1/2 NE Pt.

Lester & Violet Sheets
Tot. 76.41 Ac.

Harley & Marie Sheets
73-595
37.92 Ac.
W 1/2 NW 1/4 Pt.

Harold & Elsie Brown
97-300
Tot. 17.0 Ac.

115-250
75.10 Ac.
SW 1/4 NE 1/4 &
SE NW

Steven & Debra Sheets
192-241
1.10 Ac.

James & Ruth Ucker
190-21
9.38 Ac.
1432.20

William Lehman
162-483
1.52 Ac.

Lewis Brown
173-618
1.3709 Ac.

Carl & Viola Cyrus
92-576
2.00 Ac.

18.00 Ac.
NE SW Pt.

NW SE PT.

Harold Strait
Tot. 58.00 Ac.

Lester & Shirley Waldren
192-792
12.84 Ac.

40.00 Ac.
NW 1/4 SW 1/4

21.50 Ac.
NE 1/4 SW 1/4 Pt.

67.5335 Ac.
LOT 2 Pt. &
NW SE Pt.

Lester Waldren, et al
196-874
20.13 Ac.

Edward & Geneva Phillips
Tot. Ac. 3.0514
144-236
2.0514 Ac.
Pat Nangle
178-481
3.494 Ac.

Barbara Wyckoff
Tot. 1.754 Ac.

169-270
.166 Ac.

1.03 Ac.

172-687
.3791 Ac.

1.06 Ac.

Rickie E. Rhodes
156-348
Tot. 2.09 Ac.

194-176,
161-217
5.527 Ac.
LOT 2 Pt.

Janet Harris
Tot. Ac. 7.688

Keith A. Brown
184-642,
179-323
Tot. Ac. 68.533

Eugene & Lois Ward
97-462
40.0 Ac.
SW 1/4 SW 1/4

Donald Dupler
183-557
Tot. 54.15 Ac.

32.65 Ac.
SE SW Pt.

LOT 2 PT.

Robert & Joan Huston
107-590
10.0 Ac.

(Clarence & Flora Dupler - Life Estate)

Donald & Patricia Kline
168-715
1.8092 Ac.

David & Janice Stivison
174-121
1.74 Ac.

Raymond & Doris Pitman
10 Ac.
LOT 1

Allen McMillin, Jr.
186-400
43.0 Ac.
SE 1/4 SE 1/4

SCHRADER RD.

412

SEC. 27

1448.70

SEC. 22