

# HOCKING COUNTY

Sec 27 T15 R17

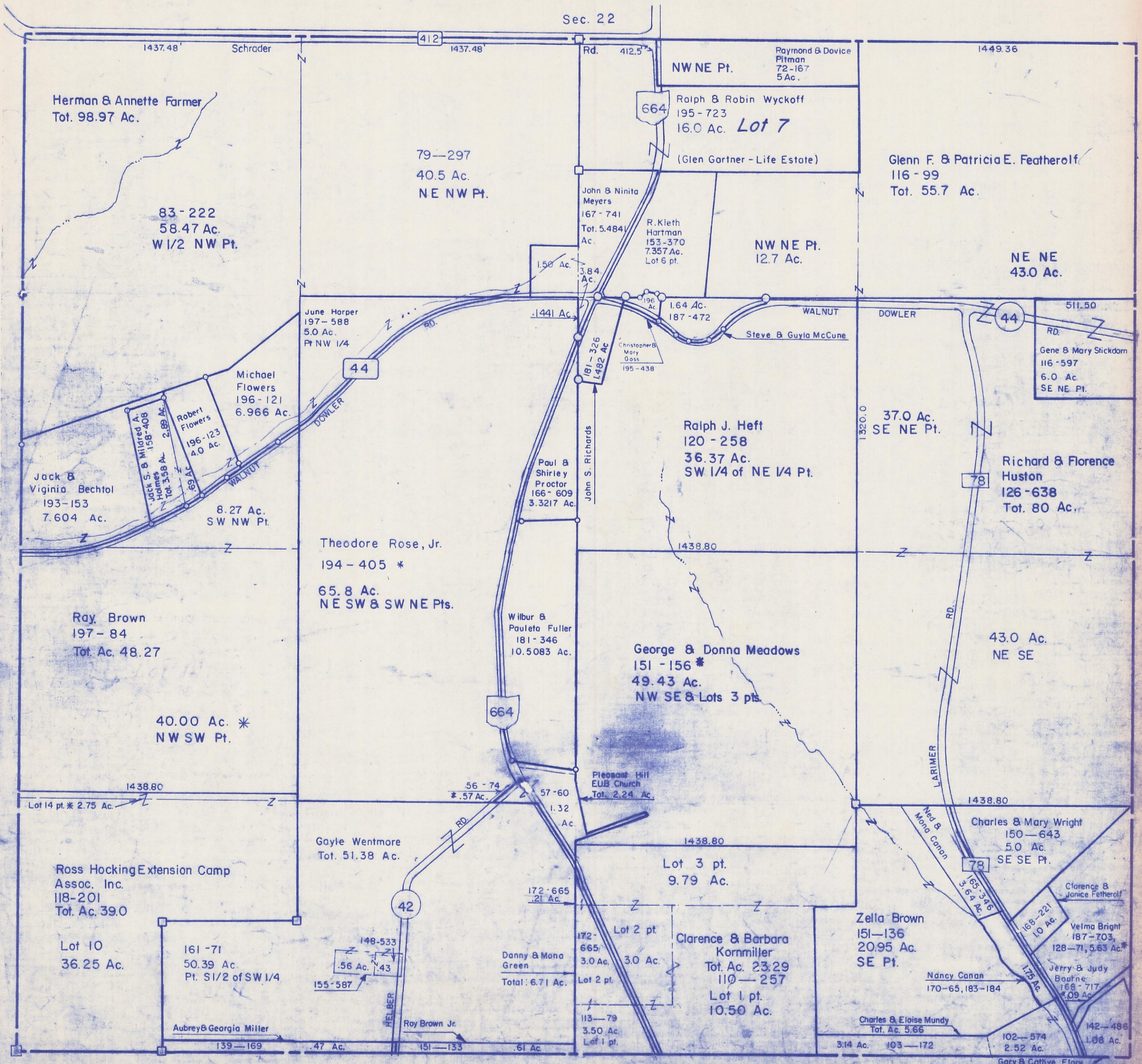
MARION TWP.

Scale 1"=400'

Sec. 22

Sec 34

Sec. 27



Herman & Annette Farmer  
Tot. 98.97 Ac.

83-222  
58.47 Ac.  
W 1/2 NW Pt.

79-297  
40.5 Ac.  
NE NW Pt.

NW NE Pt.  
Raymond & Dvice  
Pitman  
72-167  
5 Ac.  
Ralph & Robin Wyckoff  
195-723  
16.0 Ac. **Lot 7**  
(Glen Gartner - Life Estate)

Glenn F. & Patricia E. Featherolf  
116-99  
Tot. 55.7 Ac.

NE NE  
43.0 Ac.

June Harper  
197-588  
5.0 Ac.  
Pt NW 1/4

John & Ninita  
Meyers  
167-741  
Tot. 5.484  
Ac.

R. Kieth  
Hartman  
153-370  
7.357 Ac.  
Lot 6 pt.

NW NE Pt.  
12.7 Ac.

Gene & Mary Stickdom  
116-597  
6.0 Ac.  
SE NE Pt.

Jack S. & Mildred A.  
Holmes  
158-408  
2.99 Ac.  
Tot. 3.58 Ac.

Robert  
Flowers  
196-123  
4.0 Ac.

Michael  
Flowers  
196-121  
6.966 Ac.

Jack &  
Virginia Bechtol  
193-153  
7.604 Ac.

8.27 Ac.  
SW NW Pt.

Theodore Rose, Jr.  
194-405 \*  
65.8 Ac.  
NE SW & SW NE Pts.

Paul &  
Shirley  
Proctor  
166-609  
3.3217 Ac.

Ralph J. Heft  
120-258  
36.37 Ac.  
SW 1/4 of NE 1/4 Pt.

Richard & Florence  
Huston  
126-638  
Tot. 80 Ac.

Ray Brown  
197-84  
Tot. Ac. 48.27

40.00 Ac. \*  
NW SW Pt.

Wilbur &  
Pauleta Fuller  
181-346  
10.5083 Ac.

George & Donna Meadows  
151-156 \*  
49.43 Ac.  
NW SE & Lots 3 pts.

43.0 Ac.  
NE SE

Lot 14 pt. \* 2.75 Ac.

56-74  
\*.57 Ac.

Pleasant Hill  
EUB Church  
Tot. 2.24 Ac.

Gayle Wentmore  
Tot. 51.38 Ac.

Lot 3 pt.  
9.79 Ac.

Charles & Mary Wright  
150-643  
5.0 Ac.  
SE SE Pt.

Ross Hocking Extension Camp  
Assoc. Inc.  
118-201  
Tot. Ac. 39.0

Lot 10  
36.25 Ac.

161-71  
50.39 Ac.  
Pt. S 1/2 of SW 1/4

Danny & Mona  
Green  
Total: 6.71 Ac.

Lot 2 pt.  
3.0 Ac.

Clarence & Barbara  
Kornmiller  
Tot. Ac. 23.29  
110-257  
Lot 1 pt.  
10.50 Ac.

Zella Brown  
151-136  
20.95 Ac.  
SE Pt.

Clarence &  
Janice Featherolf

Velma Bright  
187-703,  
128-71, 5.63 Ac. \*

Aubrey & Georgia Miller

Roy Brown Jr.

113-79  
3.50 Ac.  
Lot 1 pt.

Charles & Eloise Mundy  
Tot. Ac. 5.66

Nancy Canon  
170-65, 183-184

Jerry & Judy  
Boufne  
168-717  
4.09 Ac.

3.14 Ac. 103-172

102-574  
2.52 Ac.

142-486  
1.08 Ac.

Gary & Cathye Flory