

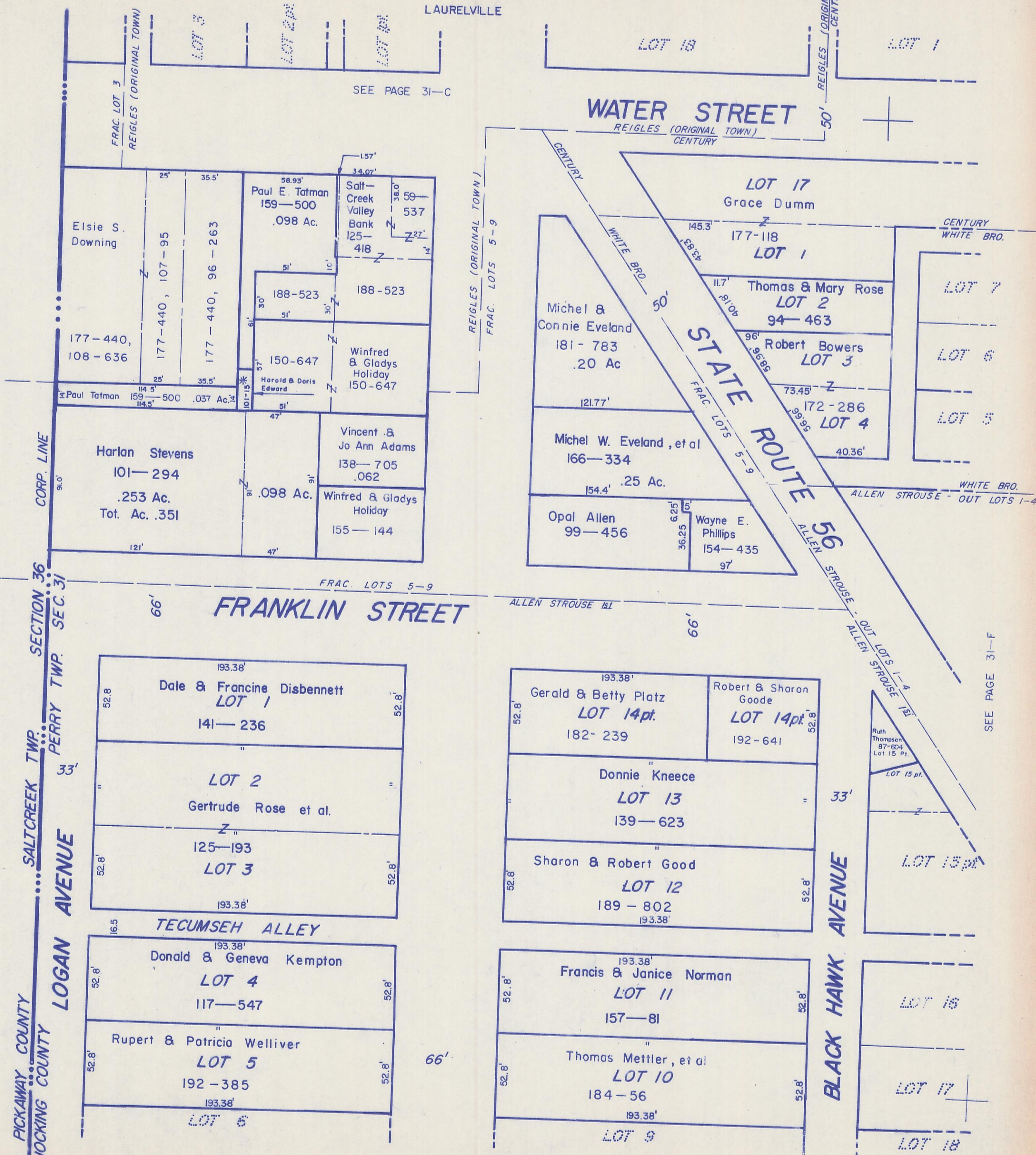
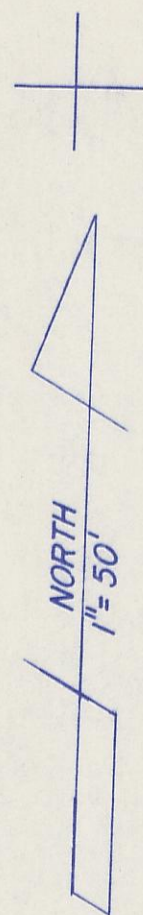
HOCKING COUNTY

PERRY TWP.

SEC. 31 T 12 R 19

LAURELVILLE

31-E



SEE PAGE 31-C

SEE PAGE 31-F

SEE PAGE 31-G

LAURELVILLE 31-E

CENTURY Pt., REIGLES, ALLEN STROUSE 1st Pt.