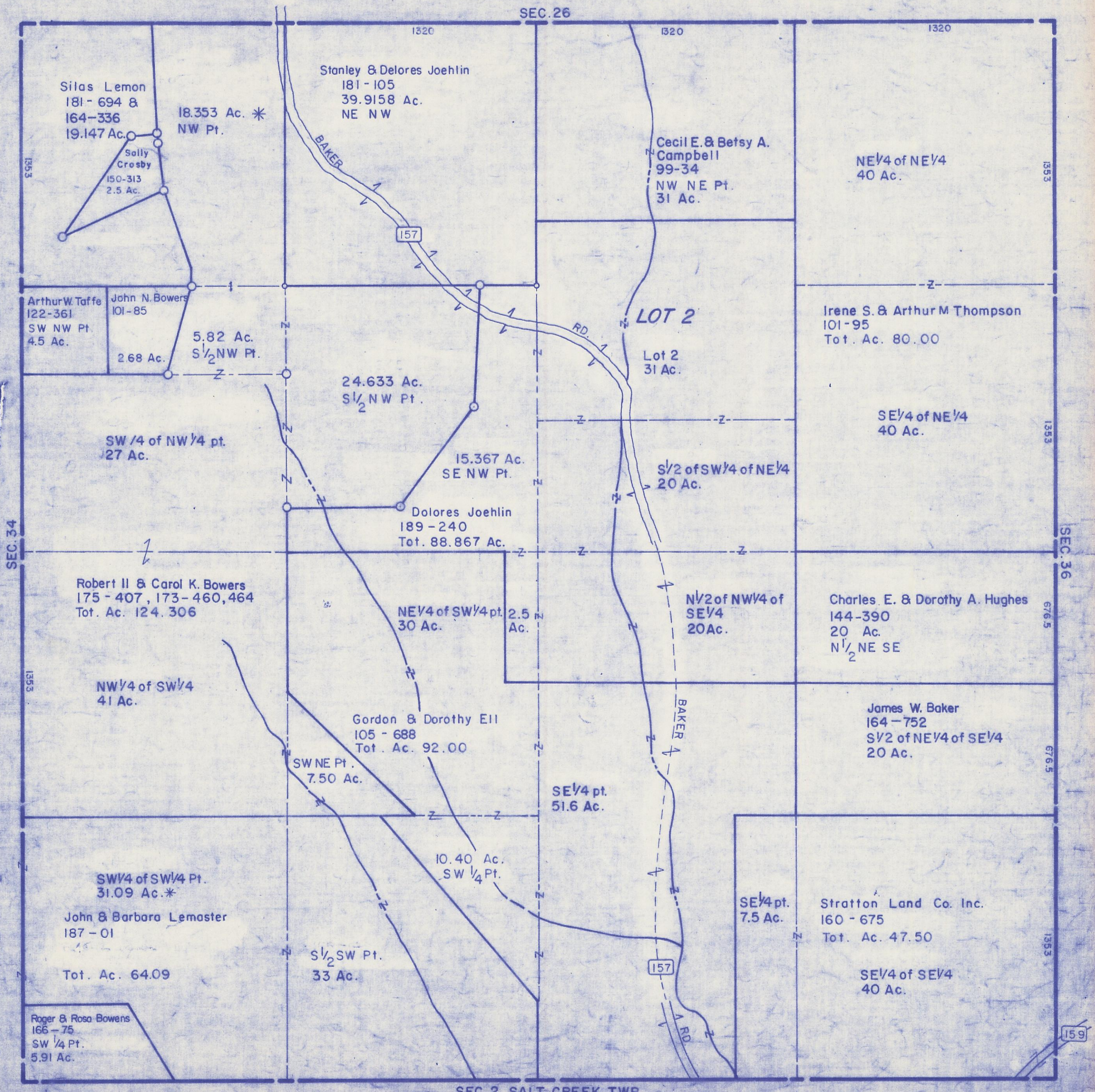


HOCKING COUNTY

Sec. 35 T12 R19

PERRY TWP.

Scale: 1" = 400'



Silas Lemon
181-694 &
164-336
19.147 Ac.

18.353 Ac. *
NW Pt.

Sally Crosby
150-313
2.5 Ac.

Stanley & Delores Joehlin
181-105
39.9158 Ac.
NE NW

Cecil E. & Betsy A.
Campbell
99-34
NW NE Pt.
31 Ac.

NE 1/4 of NE 1/4
40 Ac.

Arthur W. Taffe
122-361
SW NW Pt.
4.5 Ac.

John N. Bowers
101-85
2.68 Ac.

5.82 Ac.
S 1/2 NW Pt.

24.633 Ac.
S 1/2 NW Pt.

LOT 2

Lot 2
31 Ac.

Irene S. & Arthur M. Thompson
101-95
Tot. Ac. 80.00

SE 1/4 of NE 1/4
40 Ac.

SW 1/4 of NW 1/4 pt.
27 Ac.

15.367 Ac.
SE NW Pt.

S 1/2 of SW 1/4 of NE 1/4
20 Ac.

Dolores Joehlin
189-240
Tot. 88.867 Ac.

Robert II & Carol K. Bowers
175-407, 173-460, 464
Tot. Ac. 124.306

NE 1/4 of SW 1/4 pt.
30 Ac.

2.5 Ac.

N 1/2 of NW 1/4 of
SE 1/4
20 Ac.

Charles E. & Dorothy A. Hughes
144-390
20 Ac.
N 1/2 NE SE

NW 1/4 of SW 1/4
41 Ac.

Gordon & Dorothy Ell
105-688
Tot. Ac. 92.00

SW NE Pt.
7.50 Ac.

SE 1/4 pt.
51.6 Ac.

James W. Baker
164-752
S 1/2 of NE 1/4 of SE 1/4
20 Ac.

SW 1/4 of SW 1/4 Pt.
31.09 Ac. *

John & Barbara Lemaster
187-01

Tot. Ac. 64.09

10.40 Ac.
SW 1/4 Pt.

S 1/2 SW Pt.
33 Ac.

SE 1/4 pt.
7.5 Ac.

Stratton Land Co. Inc.
160-675
Tot. Ac. 47.50

Roger & Rosa Bowers
166-75
SW 1/4 Pt.
5.91 Ac.

SE 1/4 of SE 1/4
40 Ac.

SEC. 2 SALT CREEK TWP.

SEC. 35 (BOTTOM TIER)