

HOCKING COUNTY

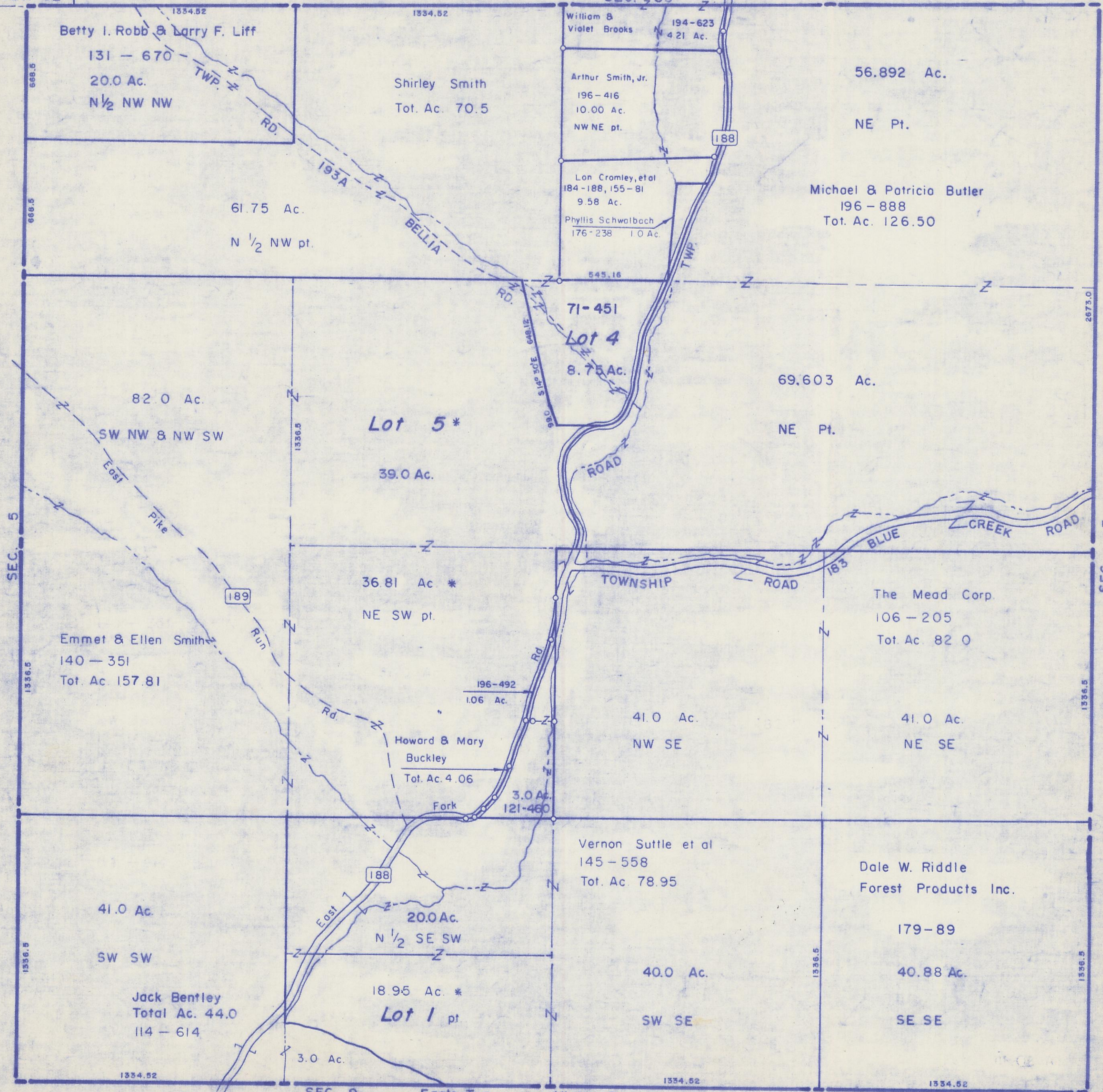
Sec. 4 T10 R19

SALT CREEK TWP.

Scale 1"=400'

SEC. 32

SEC. 33



Betty I. Robb & Larry F. Liff
131 - 670
20.0 Ac.
N 1/2 NW NW

Shirley Smith
Tot. Ac. 70.5

William B. Violet Brooks
194-623
4.21 Ac.

Arthur Smith, Jr.
196-416
10.00 Ac.
NW NE pt.

Lon Cromley, et al
184-188, 155-81
9.58 Ac.
Phyllis Schwalbach
176-238 1.0 Ac.

56.892 Ac.

NE Pt.

Michael & Patricia Butler
196-888
Tot. Ac. 126.50

61.75 Ac.
N 1/2 NW pt.

71-451
Lot 4
8.75 Ac.

69.603 Ac.

NE Pt.

82.0 Ac.
SW NW & NW SW

Lot 5*
39.0 Ac.

36.81 Ac *
NE SW pt.

The Mead Corp.
106-205
Tot. Ac. 82.0

Emmet & Ellen Smith
140-351
Tot. Ac. 157.81

Howard & Mary Buckley
Tot. Ac. 4.06

41.0 Ac.
NW SE

41.0 Ac.
NE SE

Vernon Suttle et al
145-558
Tot. Ac. 78.95

Dale W. Riddle
Forest Products Inc.

41.0 Ac.
SW SW

20.0 Ac.
N 1/2 SE SW

179-89

Jack Bentley
Total Ac. 44.0
114-614

18.95 Ac. *
Lot 1 pt

40.0 Ac.

40.88 Ac.

SW SE

SE SE

SEC. 9 Eagle Twp.

Vinton Co.

SEC. 4
BOTTOM TIER