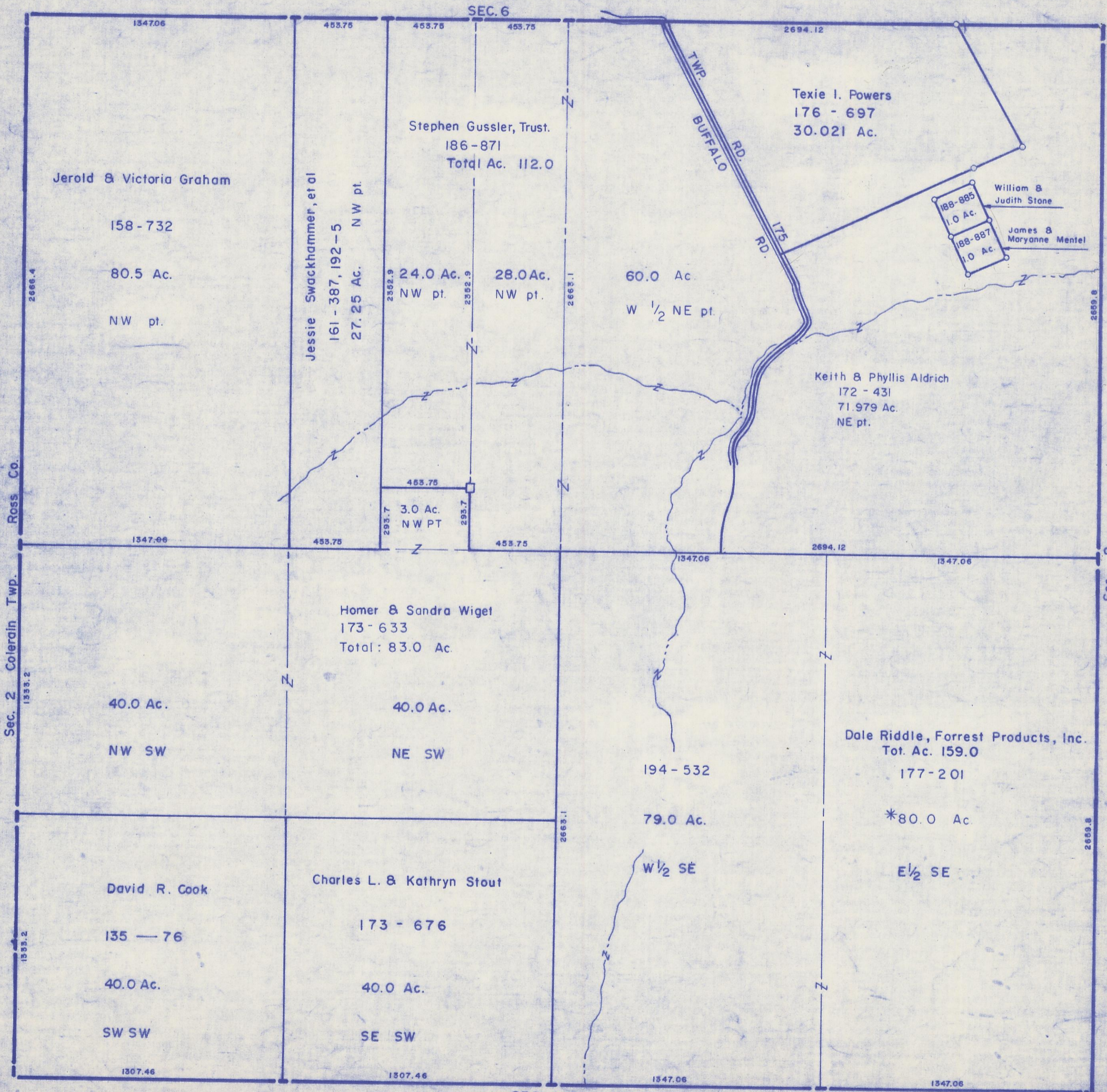


HOCKING COUNTY

Sec. 7 T11 R19

SALT CREEK TWP.

Scale 1" = 400'



SEC. 6

SEC. 18

SEC. 7

Ross Co.

Sec. 2 Colerain Twp.

Sec. 8

2669.8

2669.8

1347.06 453.75 453.75 453.75 2694.12

2666.4

Jerold & Victoria Graham

158-732

80.5 Ac.

NW pt.

Jessie Swackhammer, et al

161-387, 192-5

27.25 Ac. NW pt.

2352.9 24.0 Ac. NW pt.

2352.9 28.0 Ac. NW pt.

2663.1

60.0 Ac. W 1/2 NE pt.

Texie I. Powers

176-697

30.021 Ac.

William & Judith Stone

188-885

1.0 Ac.

James & Maryanne Mentel

188-887

1.0 Ac.

Keith & Phyllis Aldrich

172-431

71.979 Ac. NE pt.

1347.06 453.75 453.75 2694.12

293.7 3.0 Ac. NW PT

293.7

Homer & Sandra Wiget

173-633

Total: 83.0 Ac.

40.0 Ac. NW SW

40.0 Ac. NE SW

194-532

79.0 Ac. W 1/2 SE

Dale Riddle, Forrest Products, Inc.

Tot. Ac. 159.0

177-201

\*80.0 Ac. E 1/2 SE

1347.06 1347.06

1347.06 1347.06

1307.46 1307.46 1347.06 1347.06