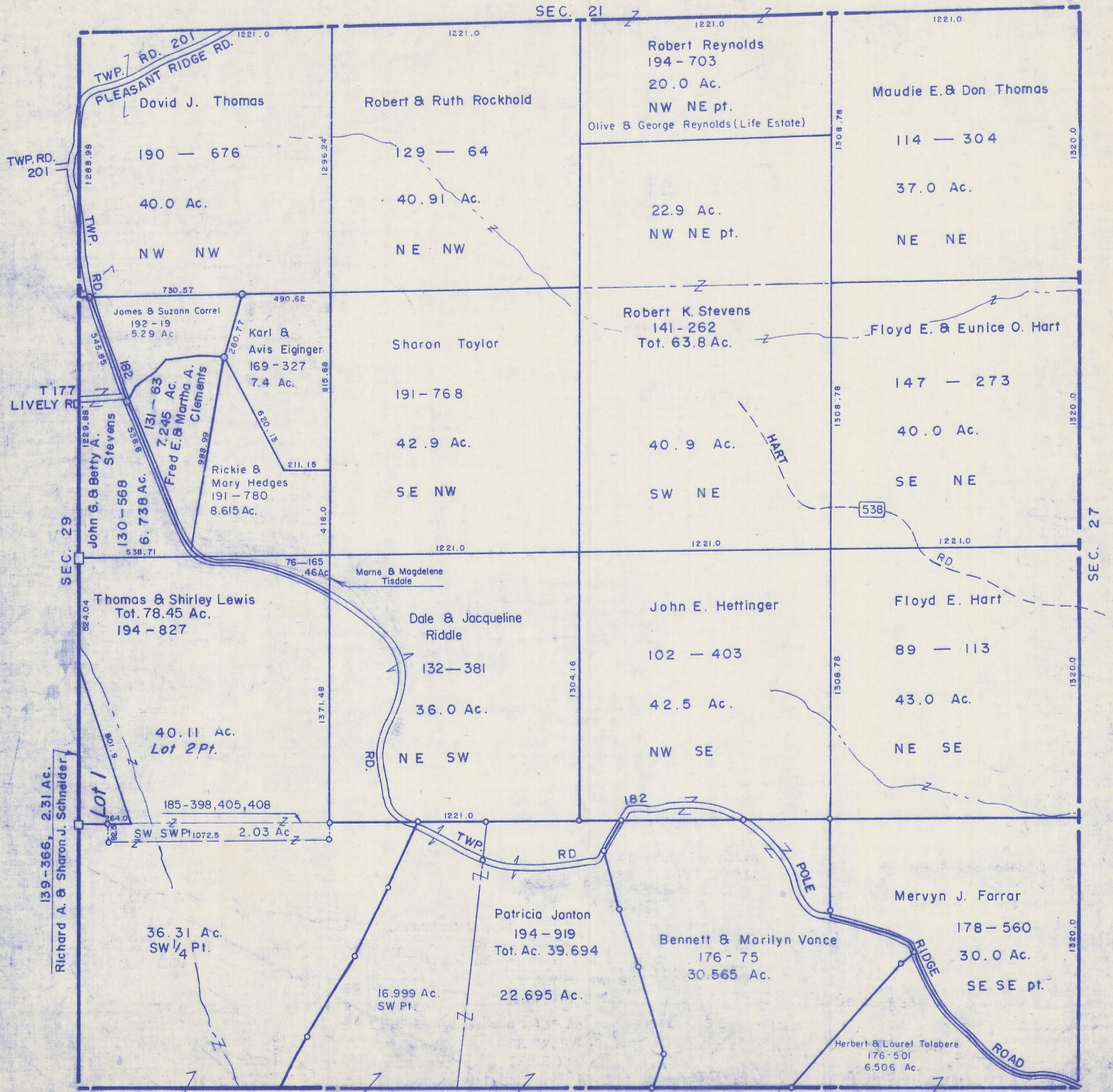


HOCKING COUNTY

Sec. 28 T11 R19

SALT CREEK TWP.

Scale 1"=400'



SEC. 21

TWP. RD. 201
PLEASANT RIDGE RD.

David J. Thomas
190 - 676
40.0 Ac.
NW NW

Robert & Ruth Rockhold
129 - 64
40.91 Ac.
NE NW

Robert Reynolds
194 - 703
20.0 Ac.
NW NE pt.
Olive & George Reynolds (Life Estate)

Maudie E. & Don Thomas
114 - 304
37.0 Ac.
NE NE

James & Suzann Correl
192 - 19
5.29 Ac.

Karl & Avis Eiginger
169 - 327
7.4 Ac.

Sharon Taylor
191 - 768
42.9 Ac.
SE NW

Robert K. Stevens
141 - 262
Tot. 63.8 Ac.

Floyd E. & Eunice O. Hart
147 - 273
40.0 Ac.
SE NE

John G. & Betty A. Stevens
130 - 568
6.738 Ac.

Fred E. & Martha A. Clements
131 - 63
7.245 Ac.

Rickie & Mary Hedges
191 - 780
8.615 Ac.

Marne & Magdelene Tisdale
76 - 165
46 Ac.

Thomas & Shirley Lewis
Tot. 78.45 Ac.
194 - 827

Dale & Jacqueline Riddle
132 - 381
36.0 Ac.
NE SW

John E. Hettinger
102 - 403
42.5 Ac.
NW SE

Floyd E. Hart
89 - 113
43.0 Ac.
NE SE

Richard A. & Sharon J. Schneider
139 - 366, 2.31 Ac.

Lot 1
6.108

Lot 2 Pt.
40.11 Ac.

185 - 398, 405, 408
SW SW Pt. 1072.5
2.03 Ac.

Patricia Janton
194 - 919
Tot. Ac. 39.694
22.695 Ac.

Bennett & Marilyn Vance
176 - 75
30.565 Ac.

Mervyn J. Farrar
178 - 560
30.0 Ac.
SE SE pt.

Herbert & Laurel Tolabere
176 - 501
6.506 Ac.

SEC. 29

SEC. 27

SEC. 33

SEC. 28