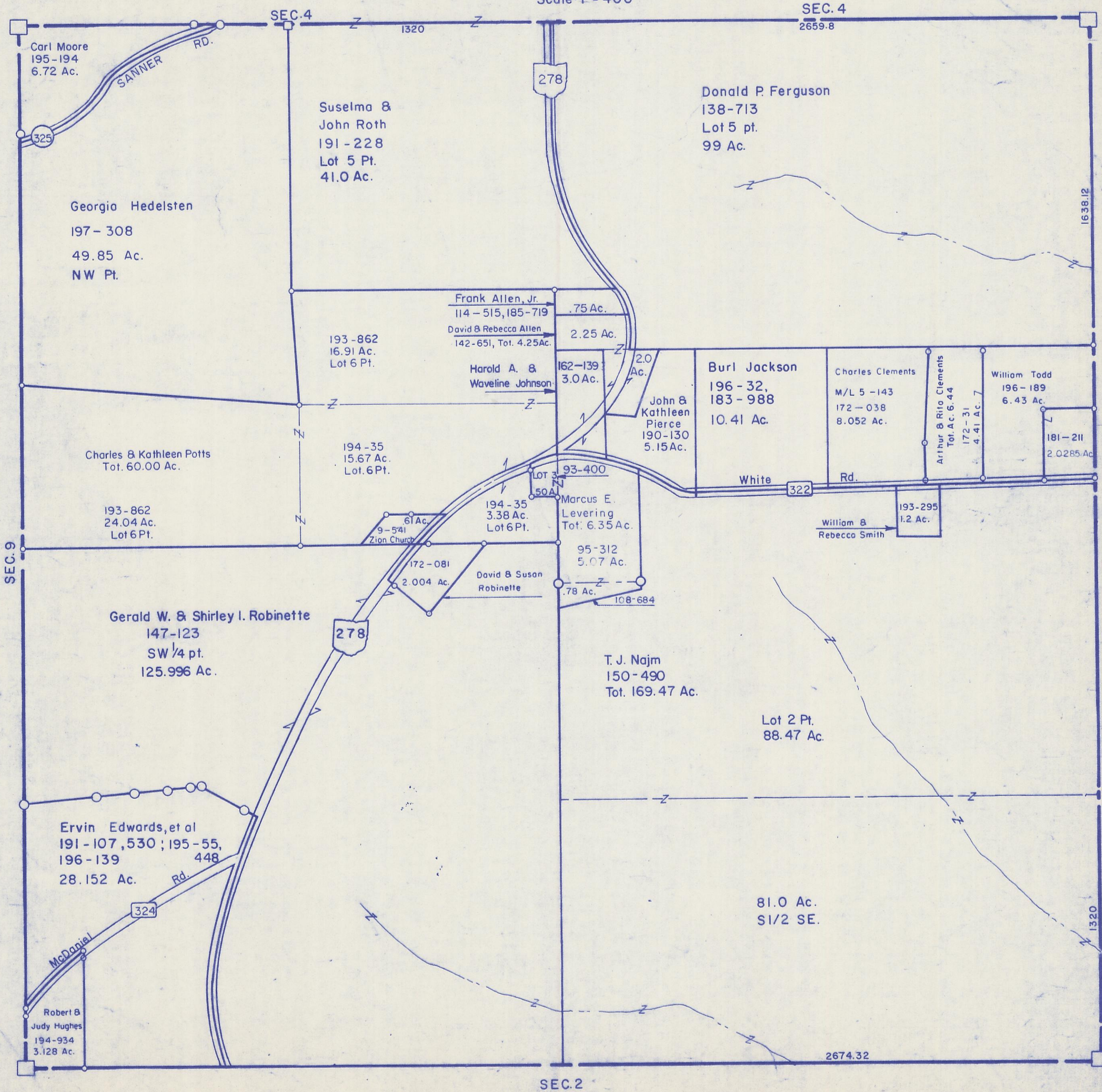


HOCKING COUNTY

Sec. 3 T 12 R 16

STARR TWP.

Scale: 1" = 400'



Carl Moore  
195-194  
6.72 Ac.

Georgia Hedelsten  
197-308  
49.85 Ac.  
NW Pt.

Suselma &  
John Roth  
191-228  
Lot 5 Pt.  
41.0 Ac.

Donald P. Ferguson  
138-713  
Lot 5 pt.  
99 Ac.

Frank Allen, Jr.  
114-515, 185-719  
.75 Ac.

David & Rebecca Allen  
142-651, Tot. 4.25 Ac.

193-862  
16.91 Ac.  
Lot 6 Pt.

Harold A. &  
Waveline Johnson  
162-139  
3.0 Ac.

Burl Jackson  
196-32,  
183-988  
10.41 Ac.

Charles Clements  
M/L 5-143  
172-038  
8.052 Ac.

William Todd  
196-189  
6.43 Ac.

Charles & Kathleen Potts  
Tot. 60.00 Ac.

194-35  
15.67 Ac.  
Lot 6 Pt.

Marcus E.  
Levering  
Tot. 6.35 Ac.

193-862  
24.04 Ac.  
Lot 6 Pt.

194-35  
3.38 Ac.  
Lot 6 Pt.

David & Susan  
Robinette  
.78 Ac.

95-312  
5.07 Ac.

William &  
Rebecca Smith  
193-295  
1.2 Ac.

Gerald W. & Shirley I. Robinette  
147-123  
SW 1/4 pt.  
125.996 Ac.

T. J. Najm  
150-490  
Tot. 169.47 Ac.

Lot 2 Pt.  
88.47 Ac.

Ervin Edwards, et al  
191-107, 530; 195-55,  
196-139 448  
28.152 Ac.

81.0 Ac.  
S 1/2 SE.

Robert &  
Judy Hughes  
194-934  
3.128 Ac.

2674.32

SEC. 2

SEC. 3

ATHENS CO. YORK TWP. SEC. 33