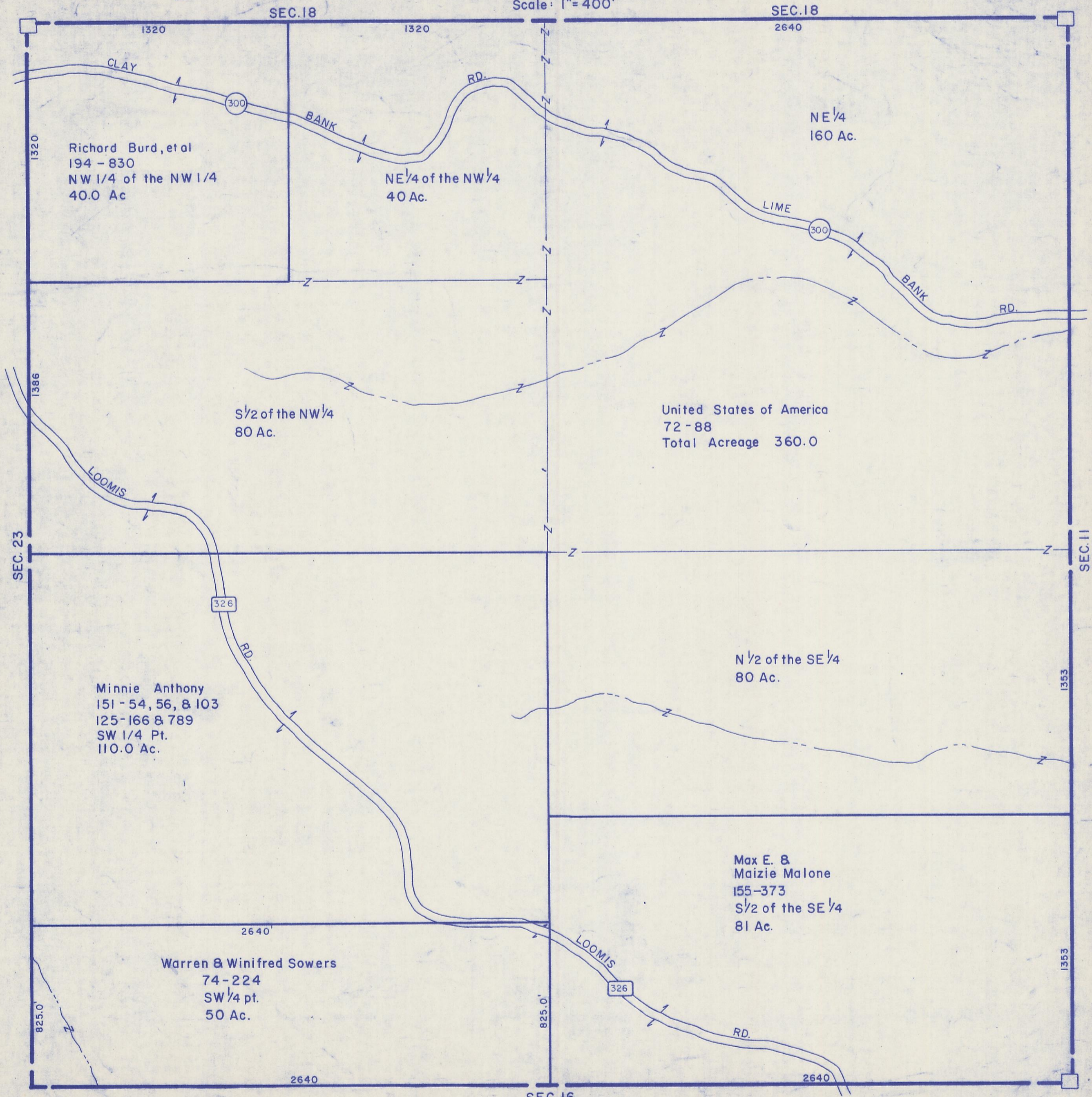


HOCKING COUNTY

Sec. 17 T 12 R 16

STARR TWP.

Scale: 1" = 400'



Richard Burd, et al
194 - 830
NW 1/4 of the NW 1/4
40.0 Ac

NE 1/4 of the NW 1/4
40 Ac.

NE 1/4
160 Ac.

S 1/2 of the NW 1/4
80 Ac.

United States of America
72 - 88
Total Acreage 360.0

Minnie Anthony
151 - 54, 56, & 103
125 - 166 & 789
SW 1/4 Pt.
110.0 Ac.

N 1/2 of the SE 1/4
80 Ac.

Warren & Winifred Sowers
74 - 224
SW 1/4 pt.
50 Ac.

Max E. &
Maizie Malone
155 - 373
S 1/2 of the SE 1/4
81 Ac.

SEC. 17