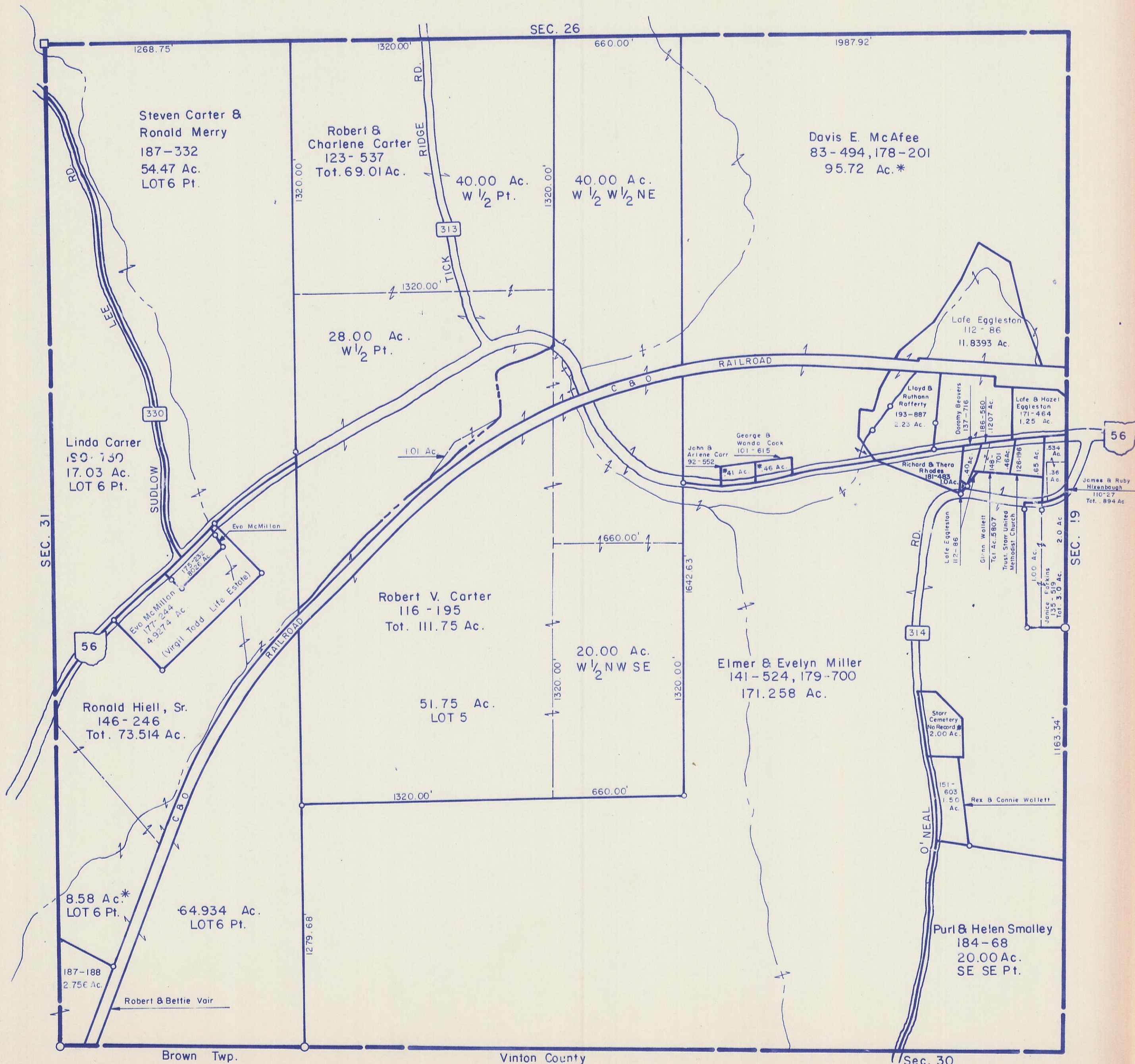


HOCKING COUNTY

STARR TWP.

SEC. 25 T12 R16

Scale 1" = 400'



Steven Carter &
Ronald Merry
187-332
54.47 Ac.
LOT 6 Pt.

Robert &
Charlene Carter
123-537
Tot. 69.01 Ac.

40.00 Ac.
W 1/2 Pt.

40.00 Ac.
W 1/2 W 1/2 NE

Davis E. McAfee
83-494, 178-201
95.72 Ac.*

28.00 Ac.
W 1/2 Pt.

Lafe Eggleston
112-86
11.8393 Ac.

Linda Carrer
190-730
17.03 Ac.
LOT 6 Pt.

1.01 Ac.

George B.
Wanda Cook
101-615
41 Ac. *46 Ac.

Lloyd &
Ruthann
Rofferty
193-887
2.25 Ac.

Dorothy Beavers
137-716
186-560
1207 Ac.

Lafe & Hazel
Eggleston
171-464
1.25 Ac.

Evo McMillon
177-244
4.9274 Ac.
(Virgil Todd Life Estate)

Robert V. Carter
116-195
Tot. 111.75 Ac.

20.00 Ac.
W 1/2 NW SE

Elmer & Evelyn Miller
141-524, 179-700
171.258 Ac.

Richard & Thera
Rhodes
181-485
10 Ac.

John &
Arlene Carr
92-552
41 Ac. *46 Ac.

Lafe Eggleston
112-86
1.00 Ac.

Ginn Wallett
148-701
186-560
1207 Ac.

Trust Starr United
Methodist Church
126-196
1.65 Ac.

Janice
Folkins
135-519
2.0 Ac.

James & Ruby
Hixenbaugh
110-27
Tot. 894 Ac.

Ronald Hiell, Sr.
146-246
Tot. 73.514 Ac.

51.75 Ac.
LOT 5

8.58 Ac.*
LOT 6 Pt.

64.934 Ac.
LOT 6 Pt.

187-188
2.756 Ac.

Robert & Bettie Vair

Starr
Cemetery
No Record #
2.00 Ac.

151-
603
1.50
Ac.
Rex & Connie Wallett

Purl & Helen Smalley
184-68
20.00 Ac.
SE SE Pt.

Brown Twp.

Vinton County

Sec. 30

SEC. 25