

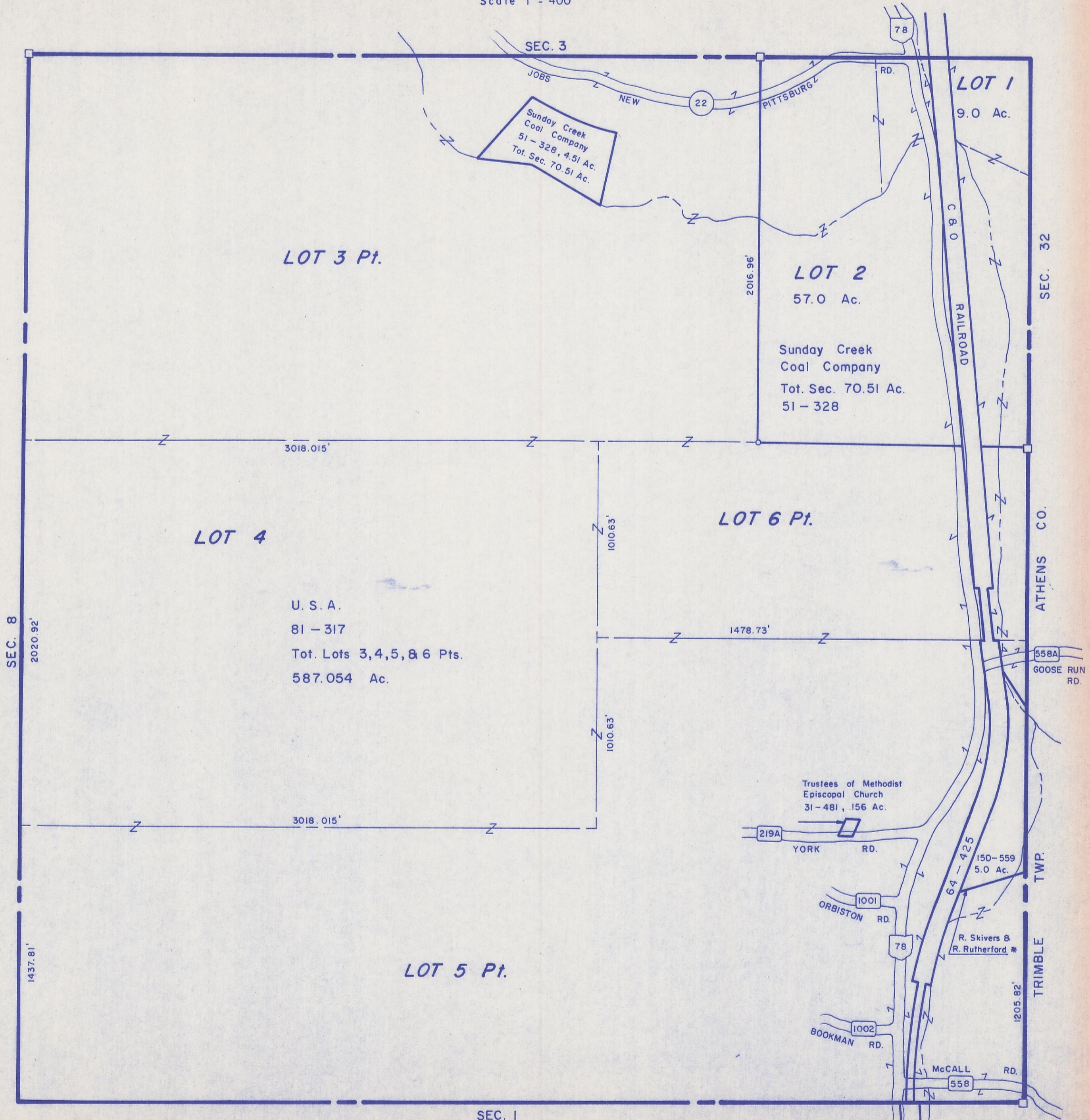
HOCKING COUNTY

WARD TWP

SEC. 2 T13 R15

Scale 1" = 400'

2



LOT 3 Pt.

LOT 2
57.0 Ac.

Sunday Creek
Coal Company
Tot. Sec. 70.51 Ac.
51 - 328

LOT 4

U. S. A.
81 - 317
Tot. Lots 3,4,5, & 6 Pts.
587.054 Ac.

LOT 6 Pt.

Trustees of Methodist
Episcopal Church
31 - 481, 156 Ac.

LOT 5 Pt.

LOT 1
9.0 Ac.

Sec. 2