

HOCKING COUNTY

WARD TWP.

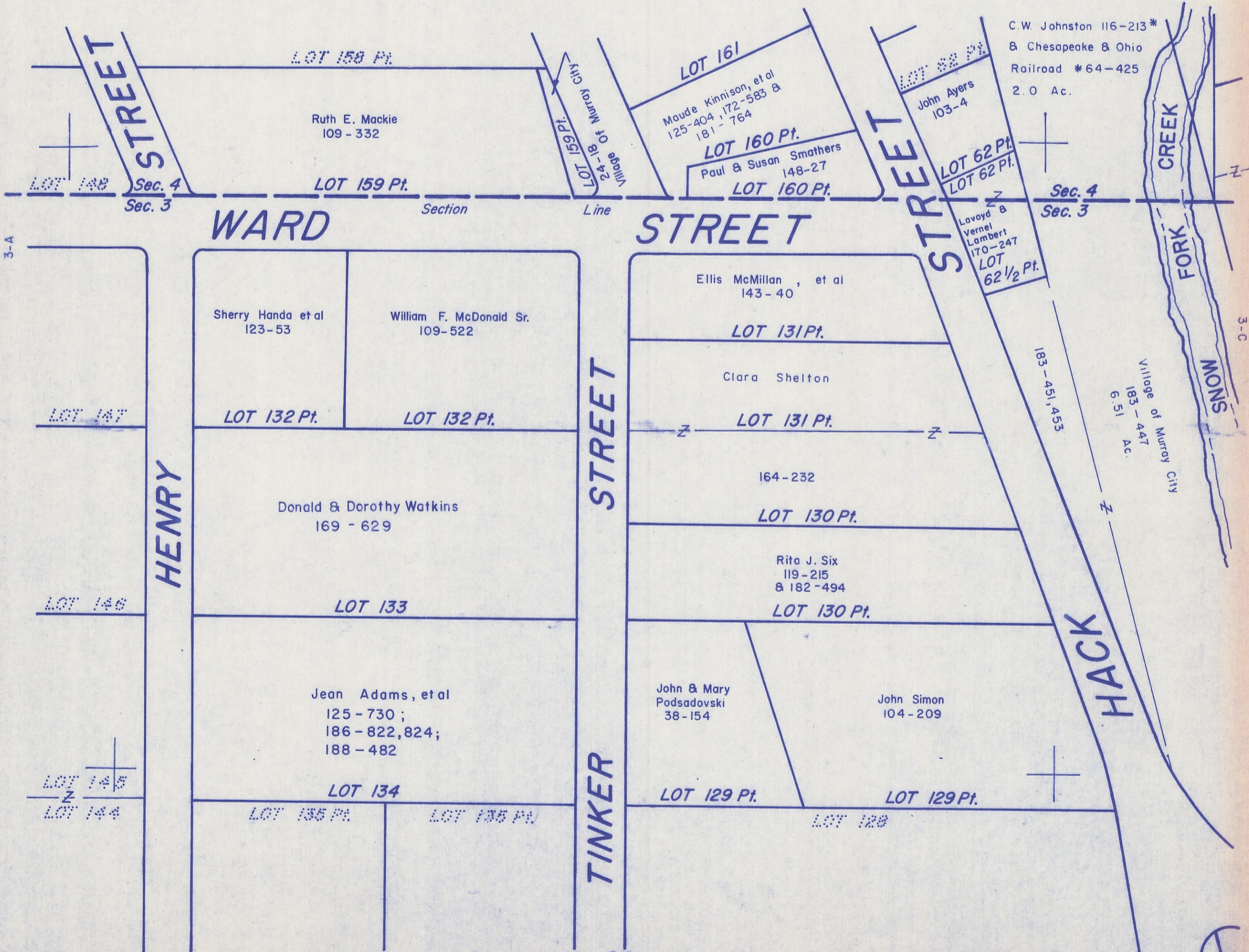
SEC. 3 T 13 R 15

MURRAY CITY

3-B

4-6

North  
Scale 1" = 50'



C.W. Johnston 116-213 \*  
& Chesapeake & Ohio  
Railroad #64-425  
2.0 Ac.

Village of Murray City  
183-447  
6.51 Ac.

3-A

3-C

3-E

MURRAY CITY 3-B