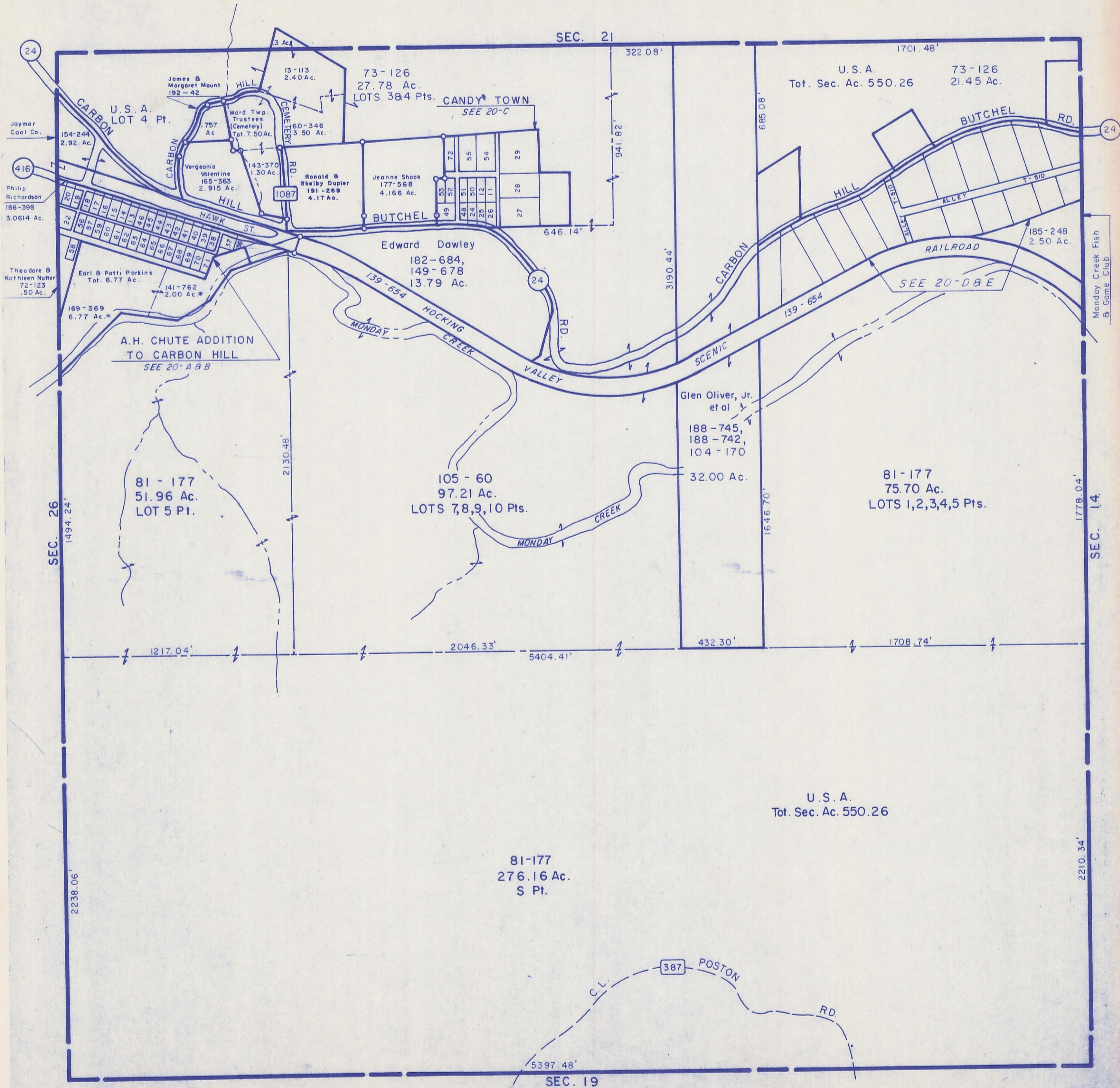


HOCKING COUNTY

WARD TWP.

SEC. 20 T13 R15

Scale 1" = 400'



24

416

24

24

14

34

SEC. 21

SEC. 26

SEC. 14

SEC. 19

SEC. 20

13-113 2.40 Ac.
73-126 27.78 Ac. LOTS 38 & 4 Pts. CANDY TOWN SEE 20-C
154-244 2.92 Ac. Jaymar Coal Co.
154-244 2.92 Ac. U.S.A. LOT 4 Pt.
757 Ac. James B. Margaret Mount 192-42
60-346 3.50 Ac. Ward Twp. Trustees (Cemetery) Tot. 7.50 Ac.
143-370 1.30 Ac. Vergeonia Valentine 165-363 2.915 Ac.
1087
Ronald & Shelby Dupler 191-269 4.17 Ac.
Jeanne Shook 177-568 4.166 Ac.
49 52 72 55 29
48 51 50 24 28
25 12 54 27
26 11
646.14'
322.08'
941.82'
1701.48'
685.08'
73-126 21.45 Ac. U.S.A. Tot. Sec. Ac. 550.26
BUTCHEL RD.
HILL
ALLEY T-510
RAILROAD
185-248 2.50 Ac. SEE 20-D & E
139-654
3190.44'
Edward Dawley 182-684, 149-678 13.79 Ac.
139-654 HOCKING CREEK
MONDAY CREEK
VALLEY
SCENIC
Glen Oliver, Jr. et al 188-745, 188-742, 104-170 32.00 Ac.
185-248 2.50 Ac. Monday Creek Fish & Game Club
169-369 6.77 Ac.* Earl & Patti Perkins Tot. 8.77 Ac.
141-762 2.00 Ac.*
A.H. CHUTE ADDITION TO CARBON HILL SEE 20-A & B
81-177 51.96 Ac. LOT 5 Pt.
105-60 97.21 Ac. LOTS 7, 8, 9, 10 Pts.
81-177 75.70 Ac. LOTS 1, 2, 3, 4, 5 Pts.
1778.04'
1646.70'
432.30'
1708.74'
5404.41'
2046.33'
1217.04'
2130.48'
2238.06'
5397.48'
U.S.A. Tot. Sec. Ac. 550.26
81-177 276.16 Ac. S Pt.
387 POSTON RD.
C.L.