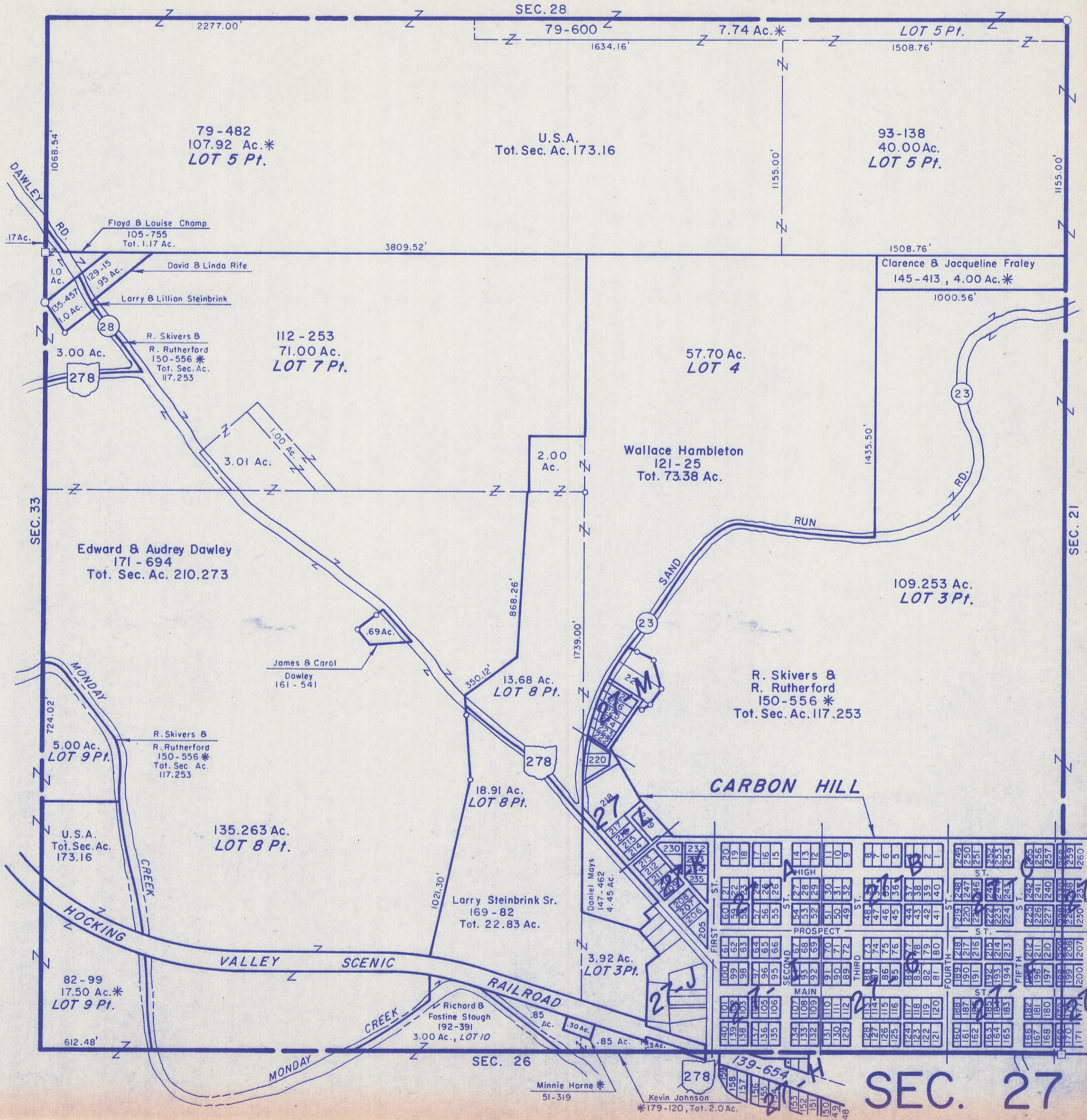


HOCKING COUNTY

WARD TWP.

SEC. 27 T13 R15

Scale 1"=400'



79-482
107.92 Ac.*
LOT 5 Pt.

U.S.A.
Tot. Sec. Ac. 173.16

93-138
40.00 Ac.
LOT 5 Pt.

112-253
71.00 Ac.
LOT 7 Pt.

57.70 Ac.
LOT 4

Clarence & Jacqueline Fraley
145-413, 4.00 Ac.*

Wallace Hambleton
121-25
Tot. 73.38 Ac.

109.253 Ac.
LOT 3 Pt.

Edward & Audrey Dawley
171-694
Tot. Sec. Ac. 210.273

R. Skivers &
R. Rutherford
150-556 *
Tot. Sec. Ac. 117.253

135.263 Ac.
LOT 8 Pt.

CARBON HILL

82-99
17.50 Ac.*
LOT 9 Pt.

Larry Steinbrink Sr.
169-82
Tot. 22.83 Ac.

3.92 Ac.
LOT 3 Pt.

Richard &
Fostine Stough
192-391
3.00 Ac., LOT 10

SEC. 27

Minnie Horne *
51-319

Kevin Johnson
*179-120, Tot. 2.0 Ac.

27-D

27-E