

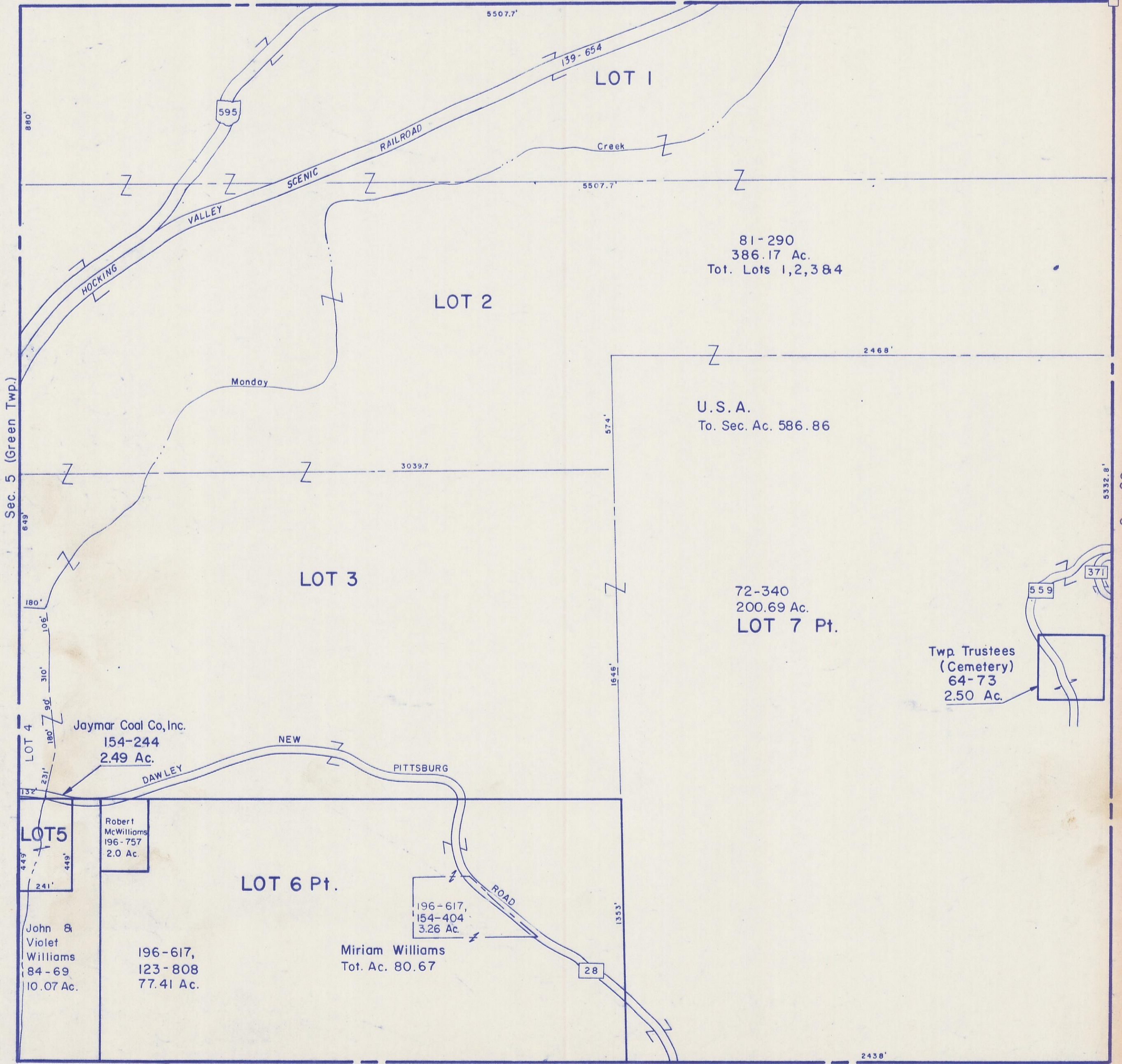
HOCKING COUNTY

Sec.35 T13 R15

WARD TWP

Scale 1" = 400'

Sec. 36



81-290
386.17 Ac.
Tot. Lots 1,2,3&4

U.S.A.
To. Sec. Ac. 586.86

72-340
200.69 Ac.
LOT 7 Pt.

Jaymar Coal Co., Inc.
154-244
2.49 Ac.

Robert McWilliams
196-757
2.0 Ac.

John & Violet Williams
84-69
10.07 Ac.

196-617,
123-808
77.41 Ac.

Miriam Williams
Tot. Ac. 80.67

Twp. Trustees
(Cemetery)
64-73
2.50 Ac.

Sec. 35