

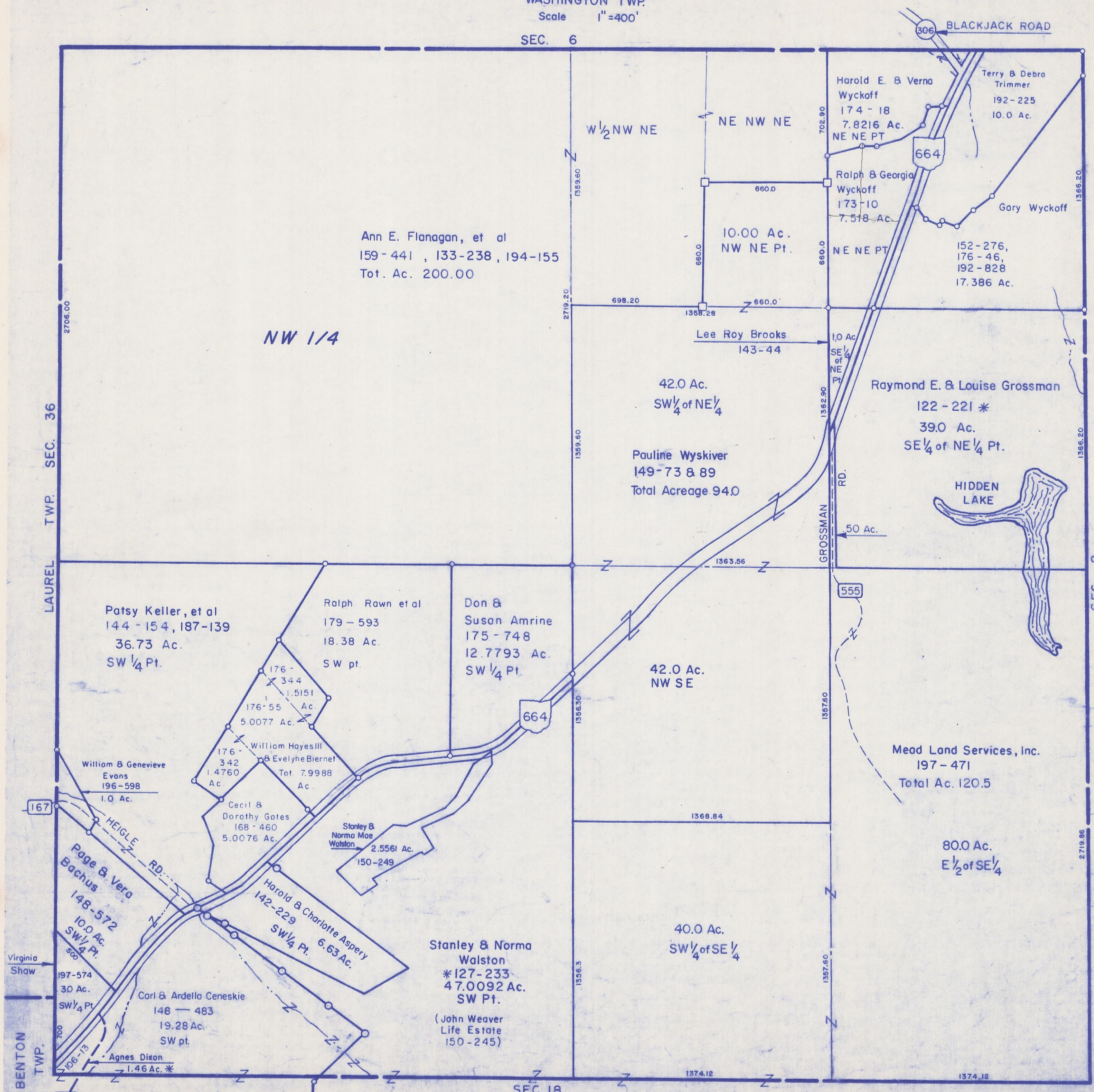
HOCKING COUNTY

Sec. 7 T13 R17

WASHINGTON TWP.

Scale 1"=400'

SEC. 6



Ann E. Flanagan, et al
 159-441, 133-238, 194-155
 Tot. Ac. 200.00

NW 1/4

W 1/2 NW NE

NE NW NE

Harold E. & Verna
 Wyckoff
 174-18
 7.8216 Ac.
 NE NE PT

Terry & Debro
 Trimmer
 192-225
 10.0 Ac.

Ralph & Georgia
 Wyckoff
 173-10
 7.518 Ac.
 NE NE PT

Gary Wyckoff

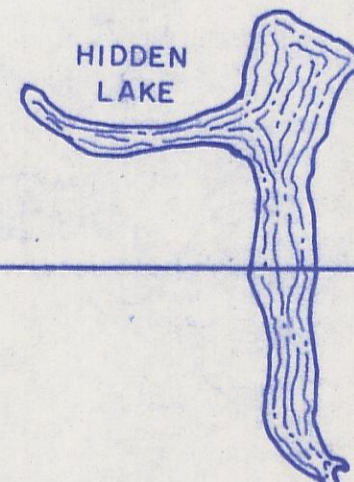
152-276,
 176-46,
 192-828
 17.386 Ac.

10.00 Ac.
 NW NE Pt.

Lee Roy Brooks
 143-44

Raymond E. & Louise Grossman
 122-221 *
 39.0 Ac.
 SE 1/4 of NE 1/4 Pt.

Pauline Wyskiver
 149-73 & 89
 Total Acreage 94.0



Patsy Keller, et al
 144-154, 187-139
 36.73 Ac.
 SW 1/4 Pt.

Ralph Rawn et al
 179-593
 18.38 Ac.
 SW pt.

Don &
 Susan Amrine
 175-748
 12.7793 Ac.
 SW 1/4 Pt.

42.0 Ac.
 NW SE

Mead Land Services, Inc.
 197-471
 Total Ac. 120.5

William & Genevieve
 Evans
 196-598
 1.0 Ac.

William Hayes III
 & Evelyne Biernet
 176-342
 1.4760 Ac.
 Tot. 7.9988 Ac.

Cecil &
 Dorothy Gates
 168-460
 5.0076 Ac.

Stanley &
 Norma Mae
 Walston
 2.5561 Ac.
 150-249

Page & Vera
 Bachus
 148-572
 10.0 Ac.
 SW 1/4 Pt.

Harold & Charlotte Aspery
 142-229
 SW 1/4 Pt.
 6.63 Ac.

Stanley & Norma
 Walston
 *127-233
 47.0092 Ac.
 SW Pt.

(John Weaver
 Life Estate
 150-245)

Carl & Ardella Ceneskie
 148-483
 19.28 Ac.
 SW pt.

Agnes Dixon
 1.46 Ac. *

SEC. 7