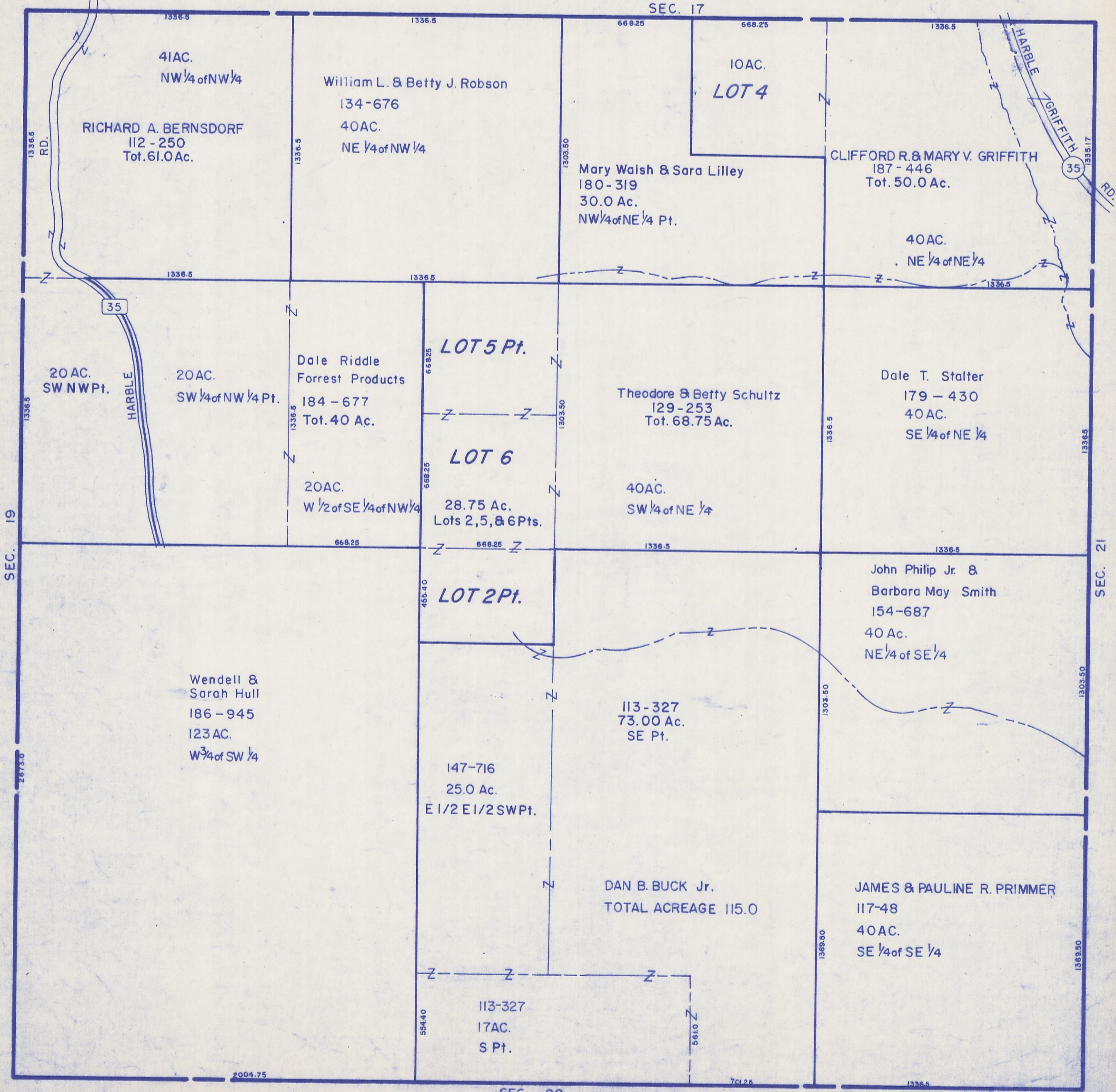


HOCKING COUNTY

SEC. 20 T13 R17

WASHINGTON TWP.

Scale 1" = 400'



1336.5 1336.5 668.25 668.25 1336.5

41AC.
NW 1/4 of NW 1/4

RICHARD A. BERNSDORF
112 - 250
Tot. 61.0 Ac.

1336.5 1336.5

William L. & Betty J. Robson
134 - 676
40AC.
NE 1/4 of NW 1/4

1303.50

Mary Walsh & Sara Lilley
180 - 319
30.0 Ac.
NW 1/4 of NE 1/4 Pt.

10AC.
LOT 4

CLIFFORD R. & MARY V. GRIFFITH
187 - 446
Tot. 50.0 Ac.

40AC.
NE 1/4 of NE 1/4

1336.5

1336.5 1336.5

20 AC.
SW NW Pt.

HARBLE

20AC.
SW 1/4 of NW 1/4 Pt.

Dale Riddle
Forrest Products
184 - 677
Tot. 40 Ac.

LOT 5 Pt.

Theodore & Betty Schultz
129 - 253
Tot. 68.75 Ac.

Dale T. Stalter
179 - 430
40AC.
SE 1/4 of NE 1/4

1336.5

20AC.
W 1/2 of SE 1/4 of NW 1/4

28.75 Ac.
Lots 2, 5, & 6 Pts.

40AC.
SW 1/4 of NE 1/4

1336.5

LOT 2 Pt.

John Philip Jr. &
Barbara May Smith
154 - 687
40 Ac.
NE 1/4 of SE 1/4

1303.50

Wendell &
Sarah Hull
186 - 945
123 AC.
W 3/4 of SW 1/4

113 - 327
73.00 Ac.
SE Pt.

147 - 716
25.0 Ac.
E 1/2 E 1/2 SW Pt.

DAN B. BUCK Jr.
TOTAL ACREAGE 115.0

JAMES & PAULINE R. PRIMMER
117 - 48
40AC.
SE 1/4 of SE 1/4

1303.50

113 - 327
17AC.
S Pt.

554.40 561.0

2004.75 701.25 1336.5

SEC. 29

SEC. 20