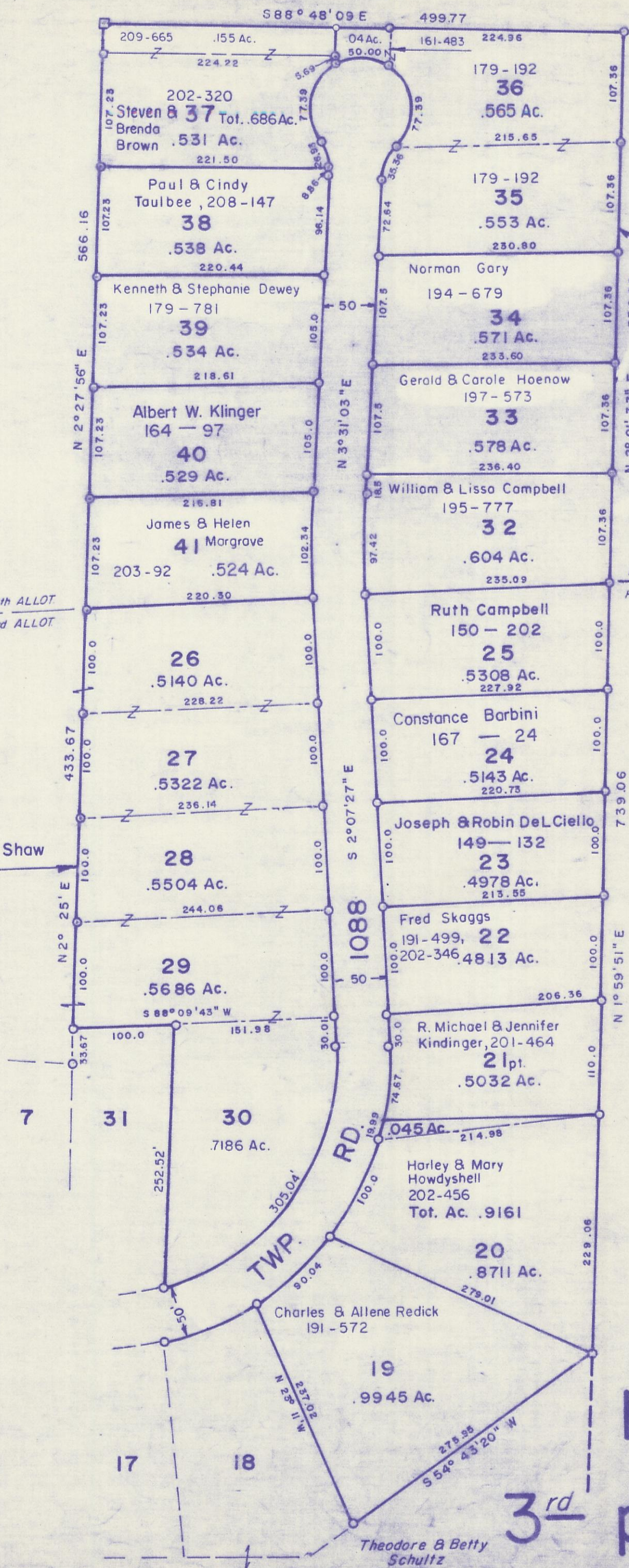


HOCKING COUNTY

Sec. 6 T14 R17

FALLS TWP.

Scale 1" = 100'



Elizabeth Shaw  
177-91

HIGHLAND PARK 4th ALLOT.  
HIGHLAND PARK 3rd ALLOT.

Lucy & Elizabeth Shaw

HIGHLAND PARK 4th ALLOT.  
HIGHLAND PARK 3rd ALLOT.

Lucy & Elizabeth Shaw  
179-192

Ervin Blackston

SEE 6-F

HIGHLAND PARK  
3<sup>rd</sup> pt. and 4<sup>th</sup> 6-G

Theodore & Betty  
Schultz