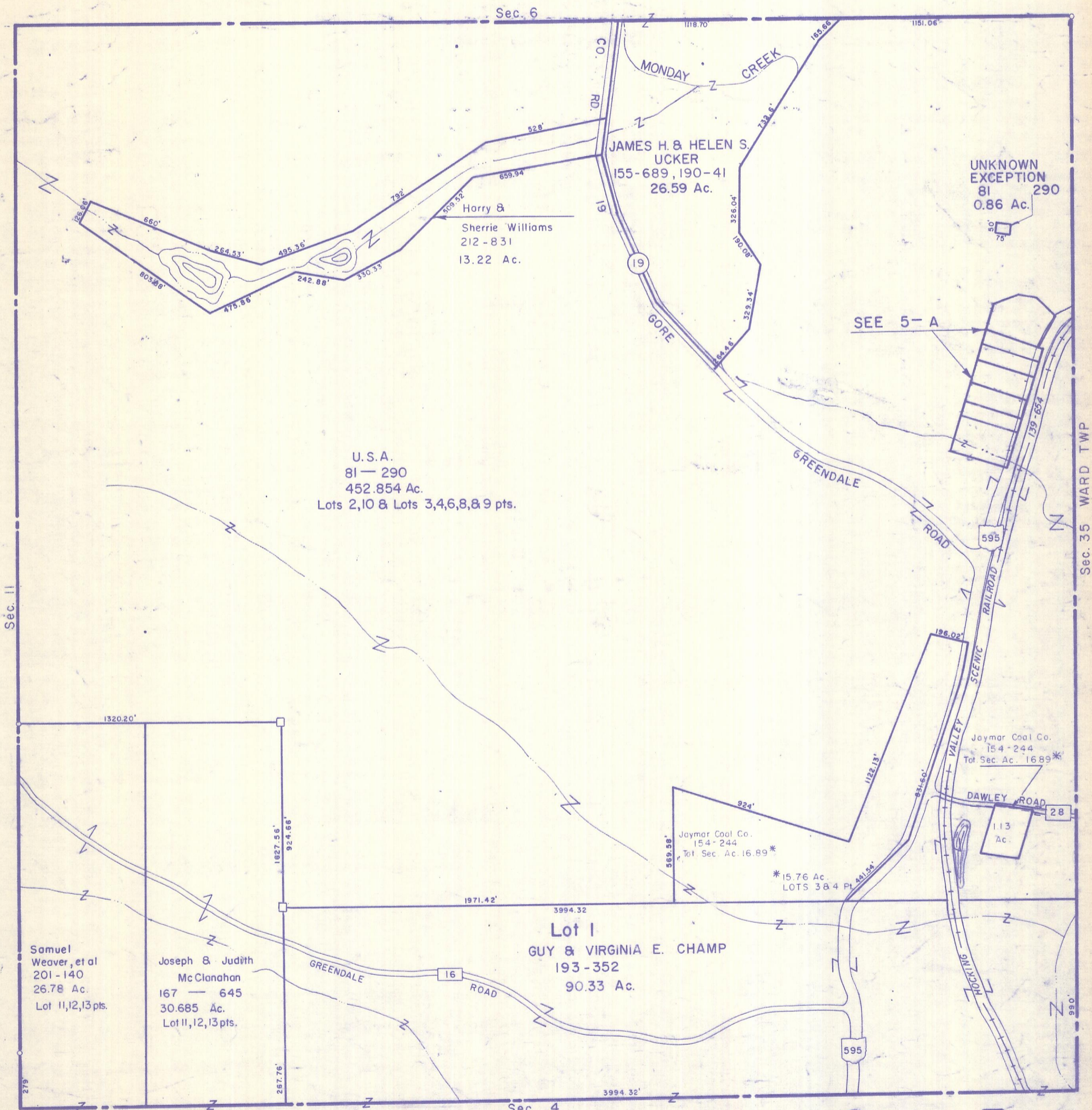


HOCKING COUNTY

Sec. 5 T13. R16

GREEN TWP.

Scale 1"=400'



JAMES H. & HELEN S. UCKER
155-689, 190-41
26.59 Ac.

Harry & Sherrie Williams
212-831
13.22 Ac.

UNKNOWN EXCEPTION
81
0.86 Ac.

U.S.A.
81-290
452.854 Ac.
Lots 2,10 & Lots 3,4,6,8,9 pts.

Samuel Weaver, et al
201-140
26.78 Ac.
Lot 11,12,13 pts.

Joseph & Judith McClanahan
167-645
30.685 Ac.
Lot 11,12,13 pts.

Lot I
GUY & VIRGINIA E. CHAMP
193-352
90.33 Ac.

Jaymar Coal Co.
154-244
Tot Sec. Ac. 16.89*

Jaymar Coal Co.
154-244
Tot Sec. Ac. 16.89*

*15.76 Ac.
LOTS 3 & 4 Pt.

1.13 Ac.

Sec. 5