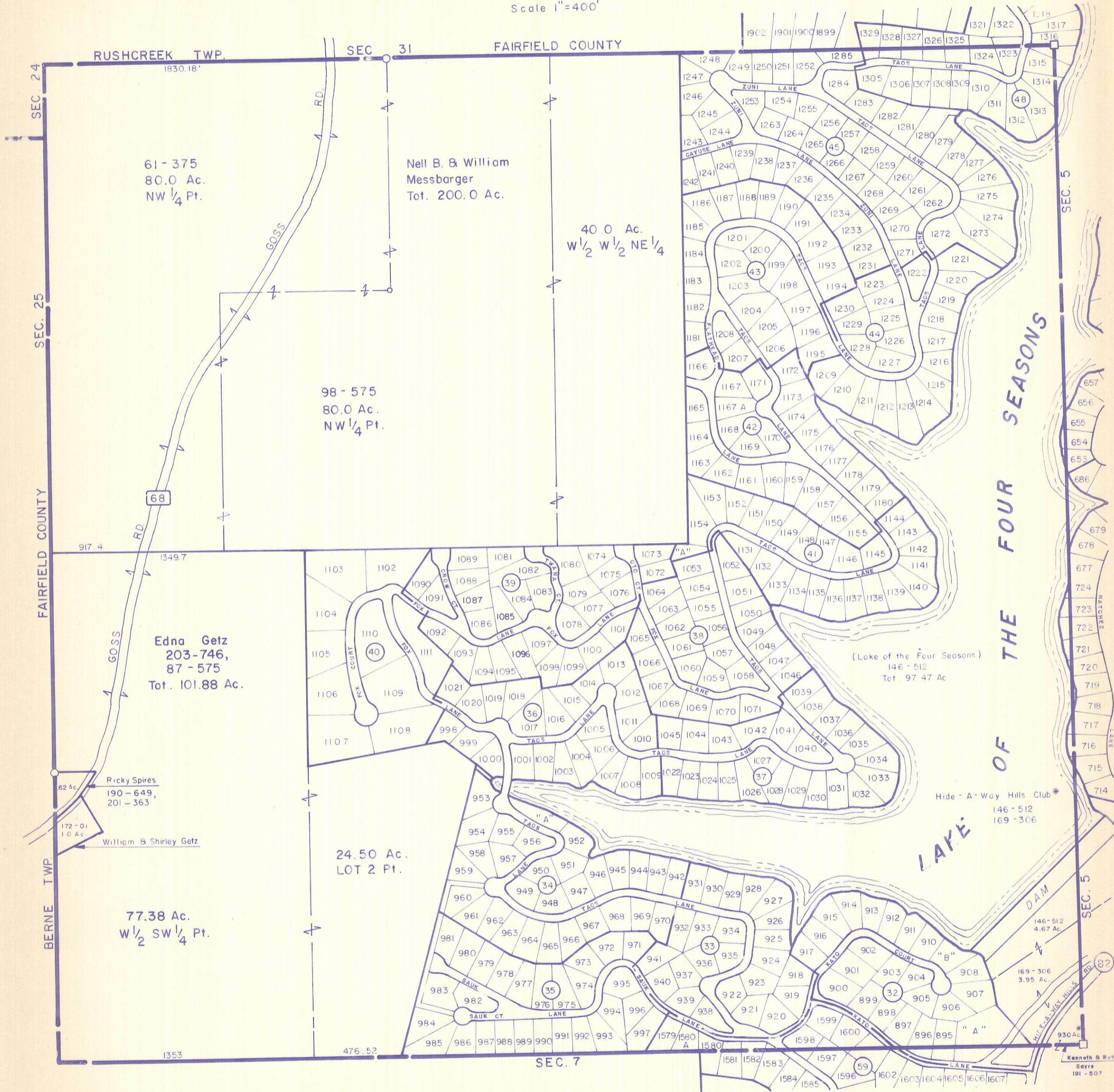


HOCKING COUNTY

MARION TWP.

SEC. 6 T15 R17

Scale 1"=400'



61-375
80.0 Ac.
NW 1/4 Pt.

Nell B. & William
Messbarger
Tot. 200.0 Ac.

40.0 Ac.
W 1/2 W 1/2 NE 1/4

98-575
80.0 Ac.
NW 1/4 Pt.

Edna Getz
203-746,
87-575
Tot. 101.88 Ac.

Ricky Spires
190-649,
201-363

William & Shirley Getz

77.38 Ac.
W 1/2 SW 1/4 Pt.

24.50 Ac.
LOT 2 Pt.

(Lake of the Four Seasons)
146-512
Tot. 97.47 Ac

Hide-A-Way Hills Club*
146-512
169-306

Kenneth B. Ruth
Soye
191-507

SEC. 6