

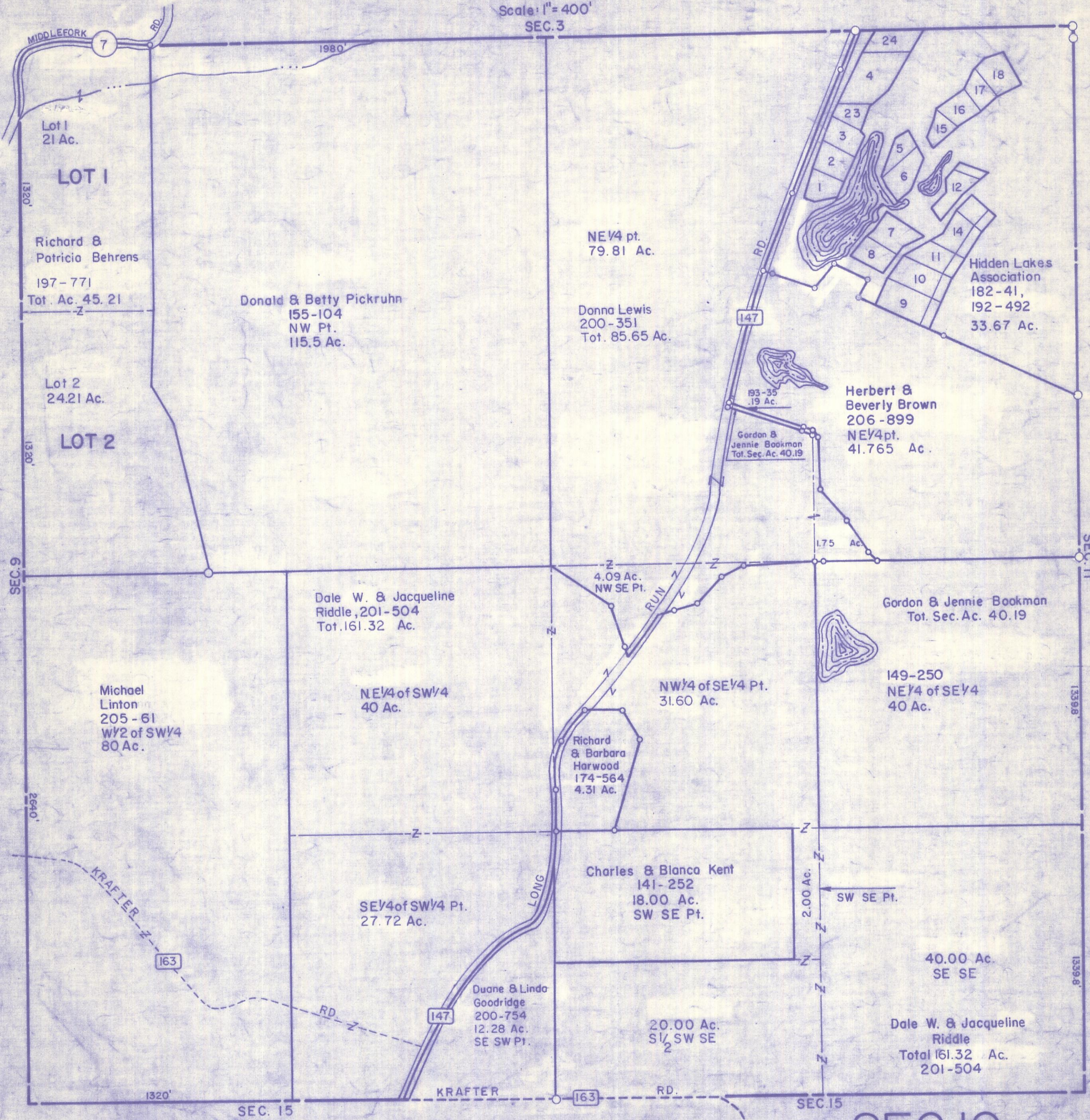
HOCKING COUNTY

Sec.10 T12 R19

PERRY TWP.

Scale: 1" = 400'

SEC. 3



Lot 1
21 Ac.
LOT 1

Richard &
Patricia Behrens
197-771
Tot. Ac. 45.21

Lot 2
24.21 Ac.
LOT 2

Donald & Betty Pickruhn
155-104
NW Pt.
115.5 Ac.

NE 1/4 pt.
79.81 Ac.

Donna Lewis
200-351
Tot. 85.65 Ac.

Hidden Lakes
Association
182-41,
192-492
33.67 Ac.

Herbert &
Beverly Brown
206-899
NE 1/4 pt.
41.765 Ac.

Gordon &
Jennie Bookman
Tot. Sec. Ac. 40.19

Dale W. & Jacqueline
Riddle, 201-504
Tot. 161.32 Ac.

Gordon & Jennie Bookman
Tot. Sec. Ac. 40.19

Michael
Linton
205-61
W 1/2 of SW 1/4
80 Ac.

NE 1/4 of SW 1/4
40 Ac.

NW 1/4 of SE 1/4 Pt.
31.60 Ac.

149-250
NE 1/4 of SE 1/4
40 Ac.

Richard
& Barbara
Harwood
174-564
4.31 Ac.

Charles & Blanca Kent
141-252
18.00 Ac.
SW SE Pt.

SE 1/4 of SW 1/4 Pt.
27.72 Ac.

Duane & Linda
Goodridge
200-754
12.28 Ac.
SE SW Pt.

20.00 Ac.
S 1/2 SW SE

40.00 Ac.
SE SE

Dale W. & Jacqueline
Riddle
Total 161.32 Ac.
201-504

SEC. 10