

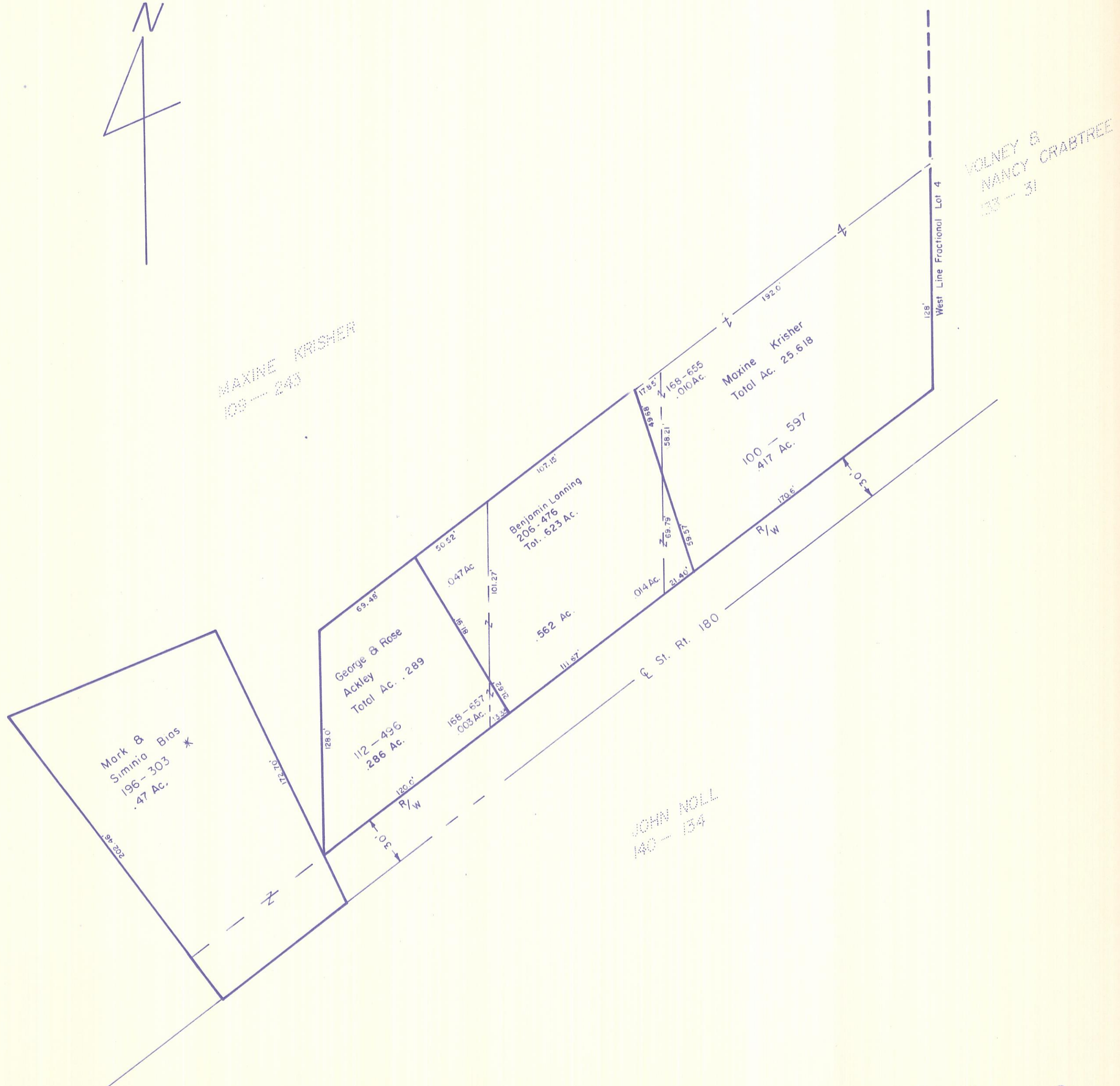
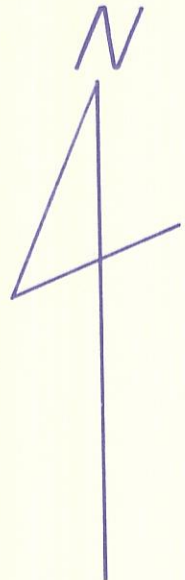
HOCKING COUNTY

PERRY TWP.

SEC. 24 T12 R19

Scale 1" = 50'

24-A



MAXINE KRISHER
109-243

Moxine Krisher
Total Ac. 25.618

Benjamin Laning
206-476
Tot. 623 Ac.

100-597
417 Ac.

Mark & Siminia Bias
196-303 *
.47 Ac.

George & Rose Ackley
112-496
286 Ac.

JOHN NOLL
140-134

VOLNEY & NANCY CRABTREE
33-31

24-A