

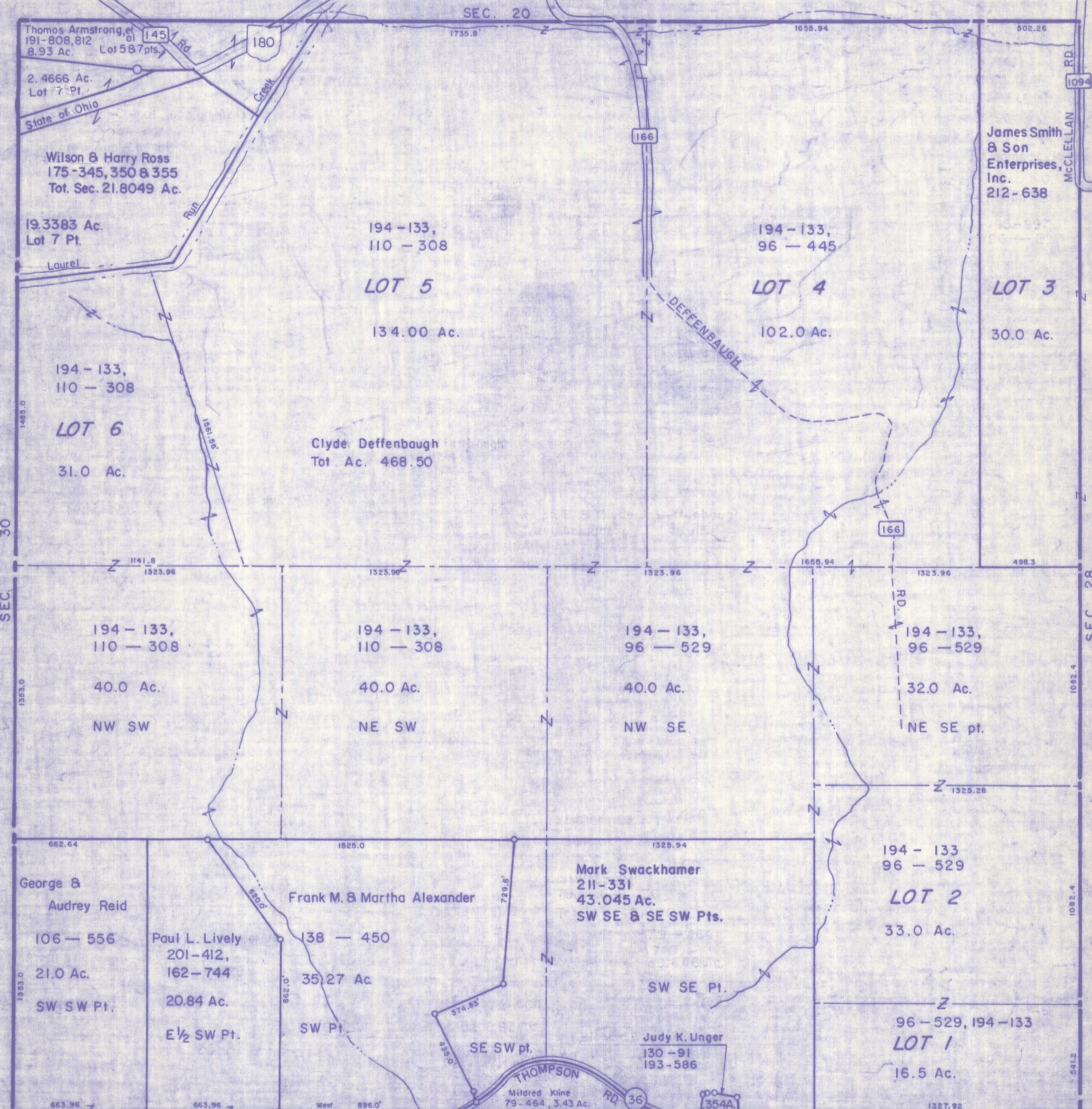
HOCKING COUNTY

Sec. 29 T 12 R 19

PERRY TWP

Scale 1"=400'

SEC. 20



Thomas Armstrong, et al
191-808, 812
8.93 Ac. Lot 5 & 7 pts.

2.4666 Ac.
Lot 7 Pt.

State of Ohio

Wilson & Harry Ross
175-345, 350 & 355
Tot. Sec. 21.8049 Ac.

19.3383 Ac.
Lot 7 Pt.

Laurel

194-133,
110-308

LOT 5

134.00 Ac.

Clyde Deffenbaugh
Tot. Ac. 468.50

194-133,
96-445

LOT 4

102.0 Ac.

James Smith
& Son
Enterprises,
Inc.
212-638

LOT 3

30.0 Ac.

194-133,
110-308

LOT 6

31.0 Ac.

SEC. 30

SEC. 28

SEC. 28

194-133,
110-308

40.0 Ac.

NW SW

194-133,
110-308

40.0 Ac.

NE SW

194-133,
96-529

40.0 Ac.

NW SE

194-133,
96-529

32.0 Ac.

NE SE pt.

George &
Audrey Reid

106-556

21.0 Ac.

SW SW Pt.

Paul L. Lively
201-412,
162-744

20.84 Ac.

E 1/2 SW Pt.

Frank M. & Martha Alexander

138-450

35.27 Ac.

SW Pt.

Mark Swackhamer
211-331

43.045 Ac.

SW SE & SE SW Pts.

SW SE Pt.

194-133,
96-529

LOT 2

33.0 Ac.

1383.0

663.96

862.0

663.96

862.0

896.0

374.93

355.0

THOMPSON RD 36

374.93

355.0

Mildred Kline
79-464, 3.43 Ac.

Judy K. Unger
130-91
193-586

354A

96-529, 194-133

LOT 1

16.5 Ac.

663.96

663.96

896.0

896.0

896.0

896.0

1327.92

SEC. 32

Sec. 29