

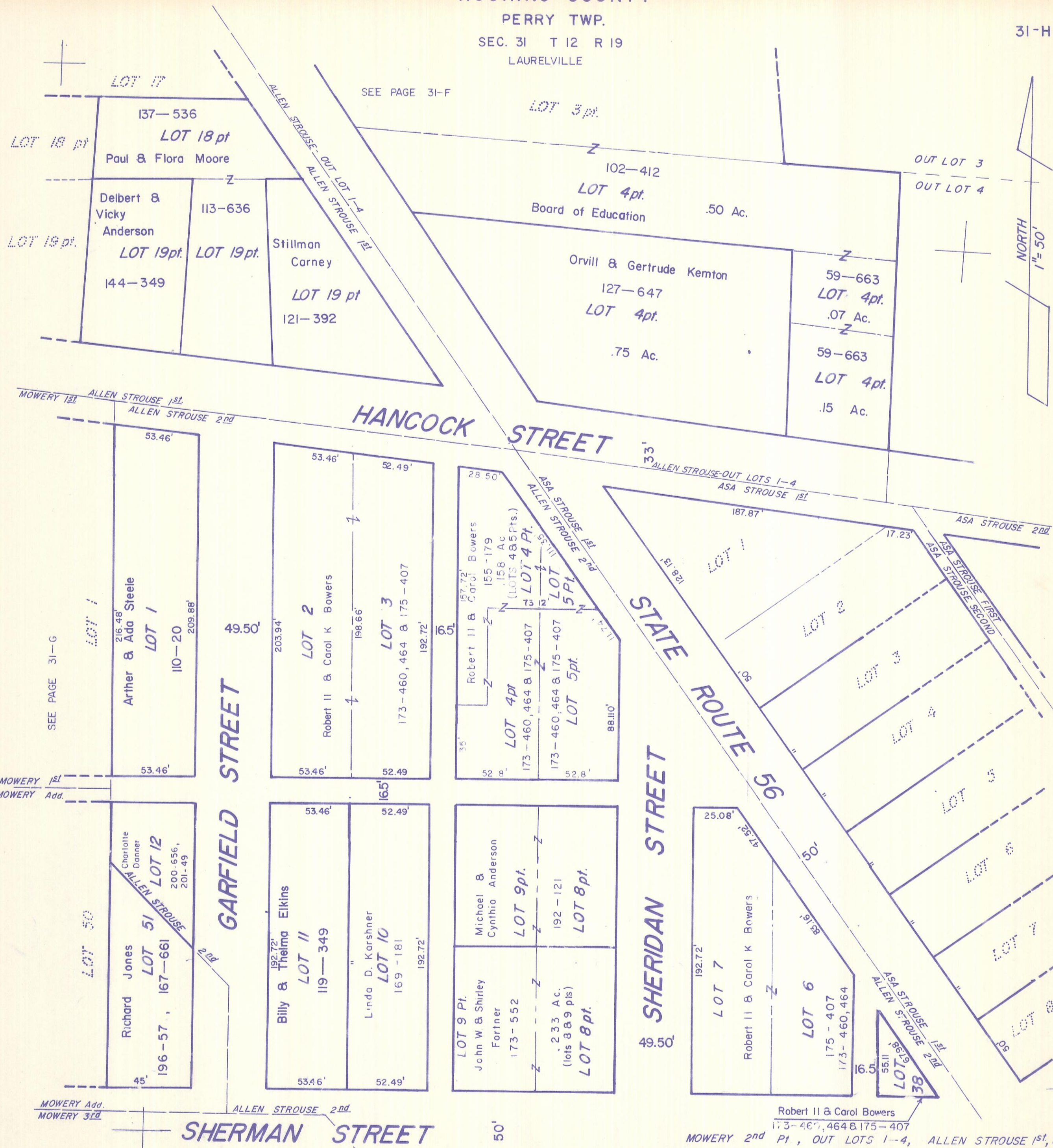
HOCKING COUNTY

PERRY TWP.

SEC. 31 T 12 R 19

LAURELVILLE

31-H



SEE PAGE 31-F

NORTH  
1" = 50'

SEE PAGE 31-I

SEE PAGE 31-G

SEE PAGE 31-K

Robert II & Carol Bowers  
173-460, 464 & 175-407  
MOWERY 2nd Pt, OUT LOTS 1-4, ALLEN STROUSE 1st, & 2nd

LAURELVILLE 31-H