

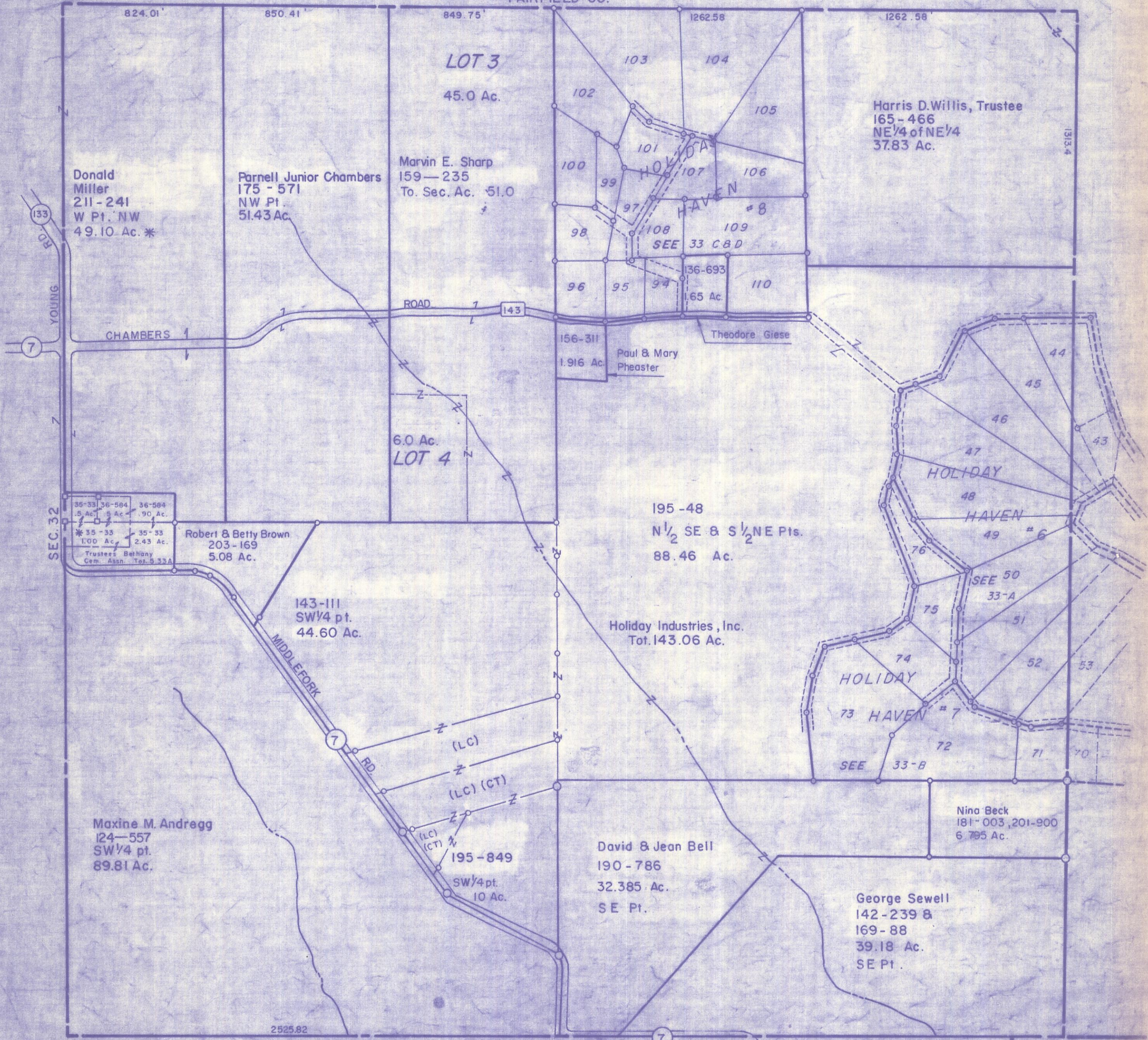
HOCKING COUNTY

Sec.33 T13 R19

PERRY TWP.

Scale: 1"=400'

FAIRFIELD CO.



Donald Miller
211-241
W Pt. NW
49.10 Ac. *

Farnell Junior Chambers
175-571
NW Pt.
51.43 Ac.

Marvin E. Sharp
159-235
To. Sec. Ac. 51.0

LOT 3
45.0 Ac.

Harris D. Willis, Trustee
165-466
NE 1/4 of NE 1/4
37.83 Ac.

35-33	36-584	36-584
.5 Ac.	5 Ac.	90 Ac.
* 35-35	35-33	35-33
1.00 Ac.	2.43 Ac.	

Trustees: Bethany
Cem. Assn. Tot. 5.33A

Robert & Betty Brown
203-169
5.08 Ac.

143-111
SW 1/4 pt.
44.60 Ac.

195-48
N 1/2 SE & S 1/2 NE Pts.
88.46 Ac.

Holiday Industries, Inc.
Tot. 143.06 Ac.

Maxine M. Andregg
124-557
SW 1/4 pt.
89.81 Ac.

195-849
SW 1/4 pt.
10 Ac.

David & Jean Bell
190-786
32.385 Ac.
SE Pt.

Nina Beck
181-003, 201-900
6.795 Ac.

George Sewell
142-239 &
169-88
39.18 Ac.
SE Pt.

SEC. 33
(TOP TIER)

Sec. 3