

HOCKING COUNTY

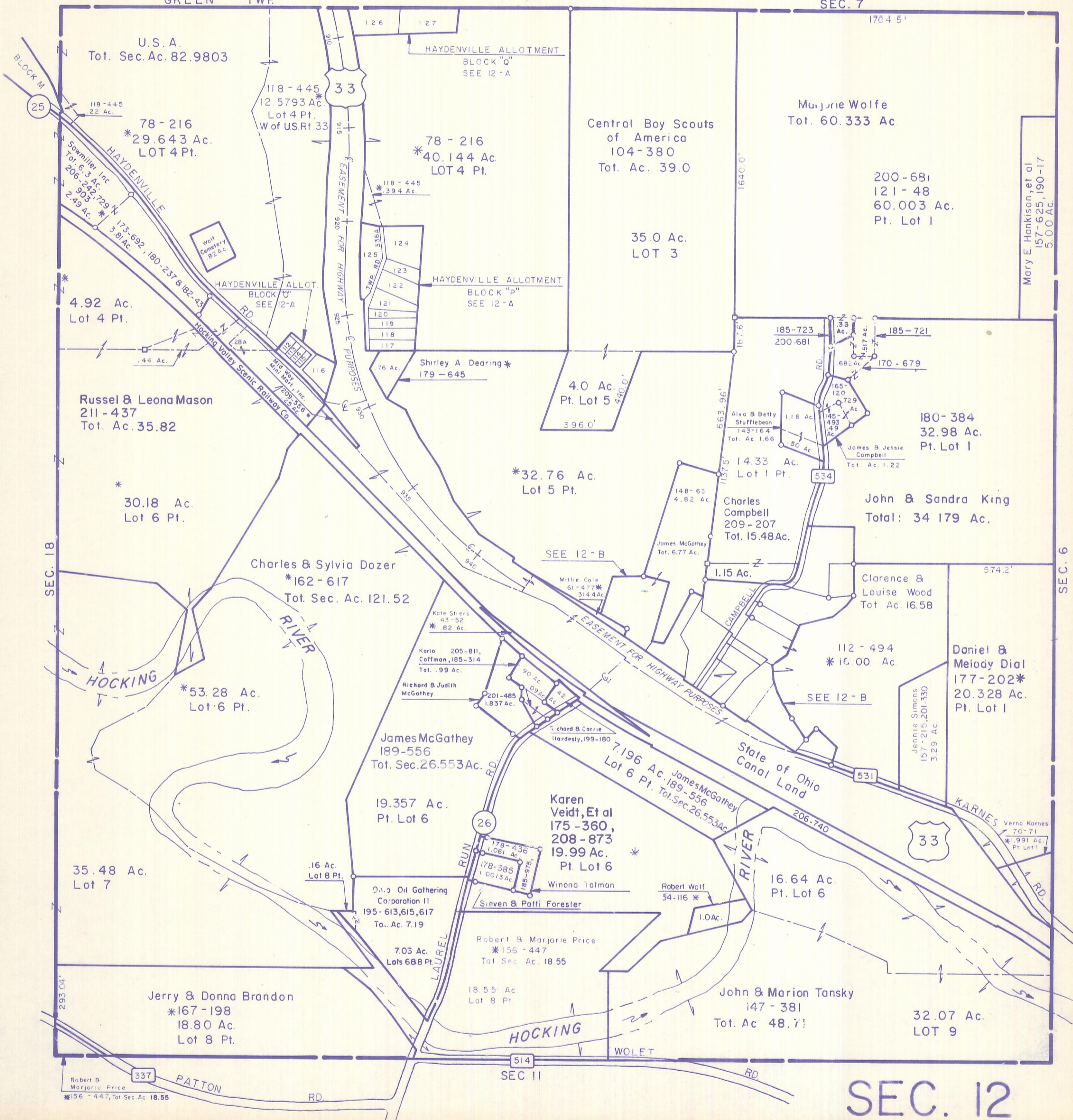
STARR TWP.

SEC. 12 T12 R16

Scale 1" = 400'

GREEN TWP

SEC. 7



U.S.A.
Tot. Sec. Ac. 82.9803

78-216
*29.643 Ac.
LOT 4 Pt.

Russel & Leona Mason
211-437
Tot. Ac. 35.82

*30.18 Ac.
Lot 6 Pt.

Charles & Sylvia Dozer
*162-617
Tot. Sec. Ac. 121.52

*53.28 Ac.
Lot 6 Pt.

35.48 Ac.
Lot 7

Jerry & Donna Brandon
*167-198
18.80 Ac.
Lot 8 Pt.

HAYDENVILLE ALLOTMENT
BLOCK "Q"
SEE 12-A

78-216
*40.144 Ac.
LOT 4 Pt.

HAYDENVILLE ALLOTMENT
BLOCK "P"
SEE 12-A

Shirley A. Dearing *
179-645

4.0 Ac.
Pt. Lot 5

*32.76 Ac.
Lot 5 Pt.

Kate Striers
43-52
*82 Ac.

Karla 205-811,
Coffman, 185-314
Tot. .99 Ac.

James McGathey
189-556
Tot. Sec. 26.553 Ac.

19.357 Ac.
Pt. Lot 6

Oil Gathering
Corporation II
195-613, 615, 617
Tot. Ac. 7.19

7.03 Ac.
Lots 6 & 8 Pt.

Robert & Marjorie Price
*156-447
Tot. Sec. Ac. 18.55

18.55 Ac.
Lot 8 Pt.

Central Boy Scouts
of America
104-380
Tot. Ac. 39.0

35.0 Ac.
LOT 3

Marjorie Wolfe
Tot. 60.333 Ac

200-681
121-48
60.003 Ac.
Pt. Lot 1

180-384
32.98 Ac.
Pt. Lot 1

John & Sandra King
Total: 34 179 Ac.

Clarence &
Louise Wood
Tot. Ac. 16.58

Daniel &
Melody Dial
177-202*
20.328 Ac.
Pt. Lot 1

Jennie Simons
157-215, 201-330
3.29 Ac.

Karen
Veidt, Et al
175-360,
208-873
19.99 Ac.
Pt. Lot 6

Winona Tatman

Sieven & Patti Forester

Robert Wolf
54-116 *

16.64 Ac.
Pt. Lot 6

John & Marion Tansky
147-381
Tot. Ac. 48.71

32.07 Ac.
LOT 9

Mary E. Hankison, et al
157-625, 190-17
5.00 Ac.

SEC. 12